

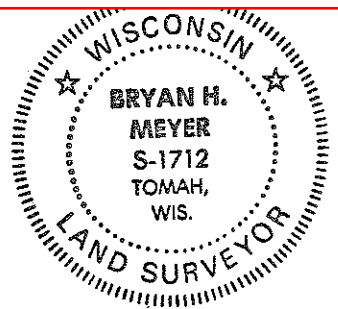
CERTIFICATE

UPDATED  
CERTIFIED LAND CORNER

No. 27

Page 2

21604040000



H. A. Sime and Associates  
P. O. Box 705  
Tomah, Wisconsin 54660  
Phone: (608)-372-5392

I, Bryan H. Meyer, do hereby certify that on the 4th day of June 19 91, I found (evidence) ~~no evidence~~ of the Southwest corner of Section 3, T 16 N, R 4 W Fourth Principal Meridian, and I re-established said corner according to the Wisconsin Statutes as shown and described hereon.

Dated this 1st day of Nov. 19 91.

*Bryan H. Meyer*

Deputy County Surveyor

History of corner establishment since Original Government Survey

Fred Holden was here in April of 1902 and calls for a stone at this corner. William Jung was here in June of 1975, found Holden's stone and obtained ties for a reference bar set next to the stone.

Description of corner evidence found:

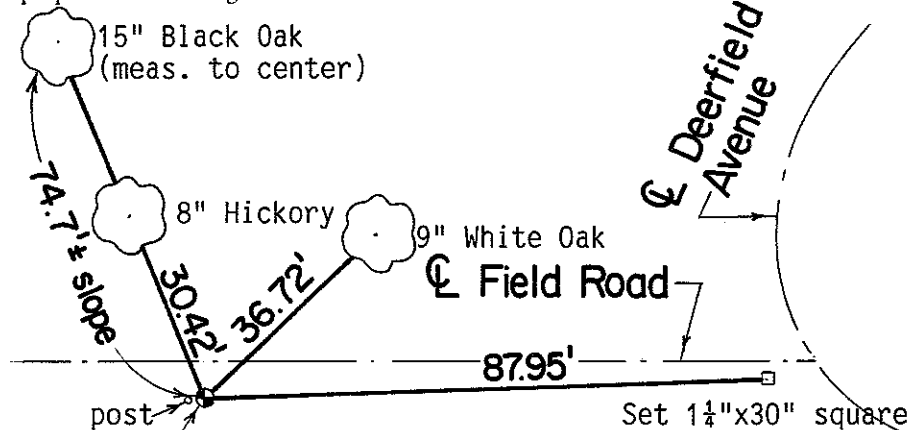
I tied into this corner in December of 1990 and found no definitive point on the stone to measure to. Also the fenceline and 16" Tree as shown on Jung's tie sheet were gone. I felt maintenance on this corner was necessary. I located the exact center of the stone, referenced that point and replaced the stone with a cast iron Harrison marker. I obtained the ties as shown below.

Description of corner and witness monuments, references and accessories used to perpetuate the original or re-established location of this corner:

Crew: Meyer, Kenworthy  
Date: June 4, 1991  
Weather: P. Cloudy, 80°±  
Witnesses to corner location:

John Kenworthy

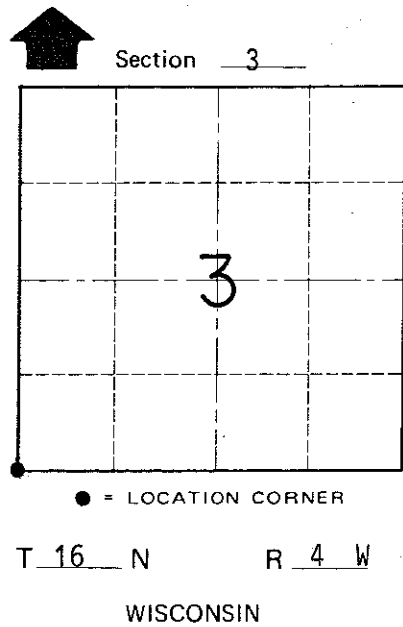
Bryan H. Meyer



Replaced sandstone monument with cast iron Harrison marker. Set sign next to Harrison. Left Jung's post in it's prior location.

Set 1 1/4" x 30" square iron bar in West wheel track of road.

Note: The 8" Hickory and the 9" White Oak are double blazed; the distance to each is to a nail set in a hack in the side of each tree. The 15" Black Oak is Jung's tree from 1975 and was not marked by me.



COUNTY SURVEYOR FORM NO. 1

SURVEY CONTROL ORDER

Horizontal	_____
Vertical	_____

WISCONSIN COORDINATE SYSTEM

Corner	East (X)	North (Y)	Elevation (Z)	Zone
Control Sta. Name				

~~Village of~~ Town of Leon

County of Monroe

CERTIFICATE

CERTIFIED LAND CORNER

No. 27

I, William C. Jung, do hereby certify that on the 23rd day of June 1975, I found (evidence) (~~no evidence~~) of the SW corner of Section 3, T16 N, R 4 W Fourth Principal Meridian, and I re-established said corner according to the Wisconsin Statutes as shown and described hereon.

Dated this 5th day of Dec. 1977.

William C. Jung, R.L.S. 1323

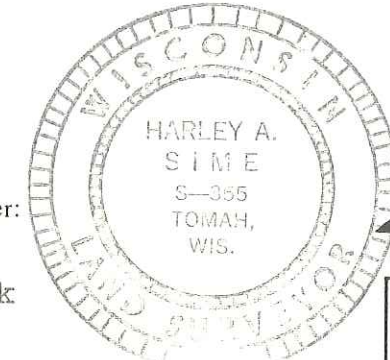
Crew Chief, County Surveyor's  
Title Office

History of original corner establishment:

Fred Holden in his notes of April, 1902, shows a stone at this corner.

Description of corner evidence found:

Found stone, on record, set iron bar next to stone on East side and set White Oak post on West side of stone



Description of corner and witness monuments, references and accessories used to perpetuate the original or re-established location of this corner:

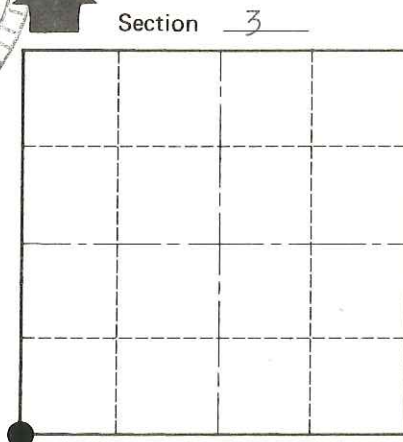
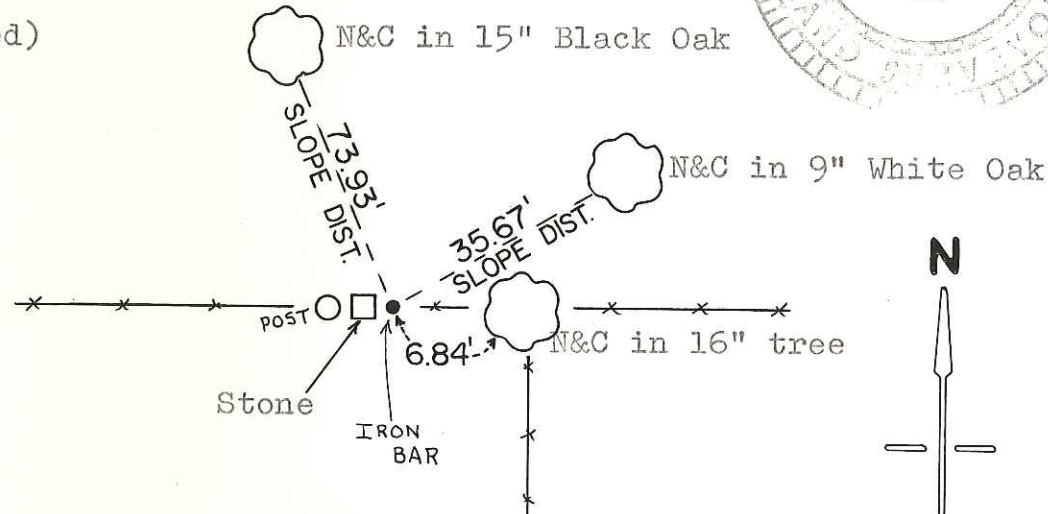
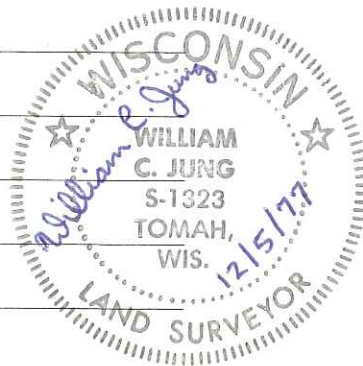
(All trees blazed)

Witnesses to corner location:

W. Jung

G. Dechant

T. Jeatran



O = LOCATION CORNER  
T 16 N R 4 W  
WISCONSIN

Approved: Harley Sime  
County Surveyor

SURVEY CONTROL ORDER

Horizontal	_____
Vertical	_____

WISCONSIN COORDINATE SYSTEM

Corner	East (X)	North (Y)	Elevation (Z)	Zone
Control Sta. Name				

City, Village or Town Leon

County of Monroe

COUNTY SURVEYOR FORM NO. 1