

21604032000

I, William C. Jung, do hereby certify that on the eleventh day of November 1980, I found (evidence) ~~(no evidence)~~ of the East 1/4 corner of Section 3, T 16 N, R 4 W Fourth Principal Meridian, and I re-established said corner according to the Wisconsin Statutes as shown and described hereon.

History of corner establishment since Original Government Survey

The 1941 highway map shows the corner to be at this location.

Description of corner evidence found:

Set the corner on line (North-South) Between the N.E. and S.E. section corners, and on line (East - West) with the existing occupied lines. The corner as set fits existing field conditions very well.

Dated this eighth day of Jan. 1981.

William C. Jung - R.L.S. 1323

Surveyor, Monroe County Surveyors Office
Title

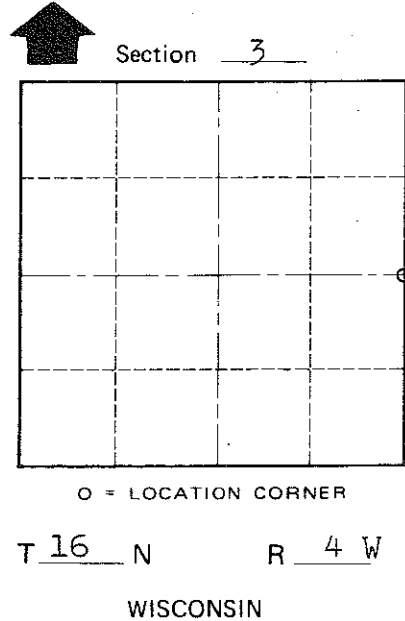
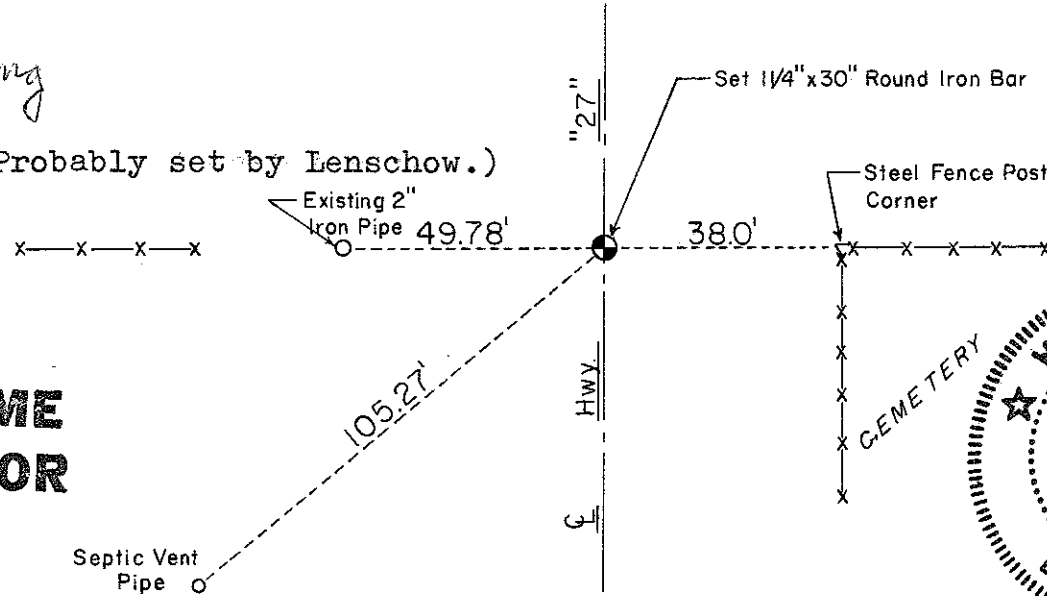
Description of corner and witness monuments, references and accessories used to perpetuate the original or re-established location of this corner:

Set a 1 1/4"x30" round iron bar in the road centerline.

Witnesses to corner location:

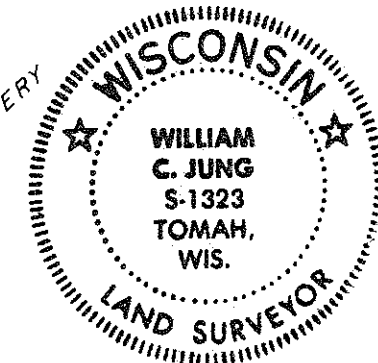
William Jung *William C. Jung*

Gary Dechant (Probably set by Lenschow.)



COUNTY SURVEYOR FORM NO. 1

Approved: **HARLEY A. SIME**
MONROE CO. SURVEYOR



SURVEY CONTROL ORDER

Horizontal _____
Vertical _____

WISCONSIN COORDINATE SYSTEM

Corner	East (X)	North (Y)	Elevation (Z)	Zone
Control Sta. Name				

City, Village or Town of Leon

County of Monroe
Wisconsin