

21604030020

I, William C. Jung, do hereby certify that on the 11th day of November 1980, I found ~~(evidence)~~ (no evidence) of the S<sup>1</sup>/<sub>4</sub> corner of Section 3, T16 N, R4 W Fourth Principal Meridian, and I re-established said corner according to the Wisconsin Statutes as shown and described hereon.

History of corner establishment since Original Government Survey  
No known recorded history since the original government survey.

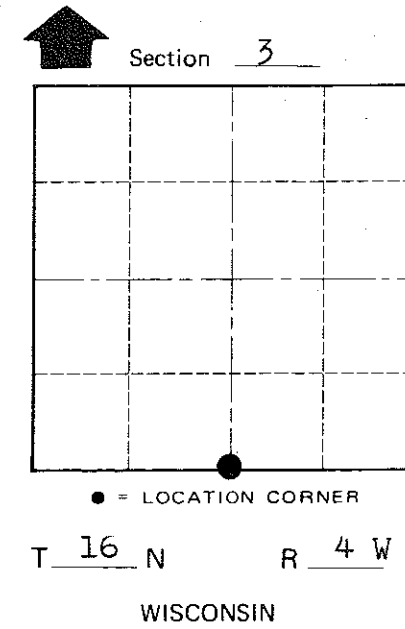
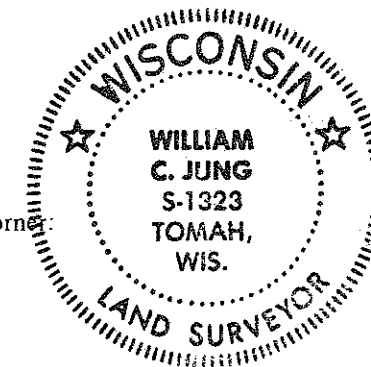
Dated this 15th day of Jan. 1981.

Description of corner evidence found:

Set the corner by single proportionate measurement between the SE and SW section corners. The line fence to the West appears to be about a rod off.

William C. Jung

William C. Jung, R.L.S. 1323  
Title

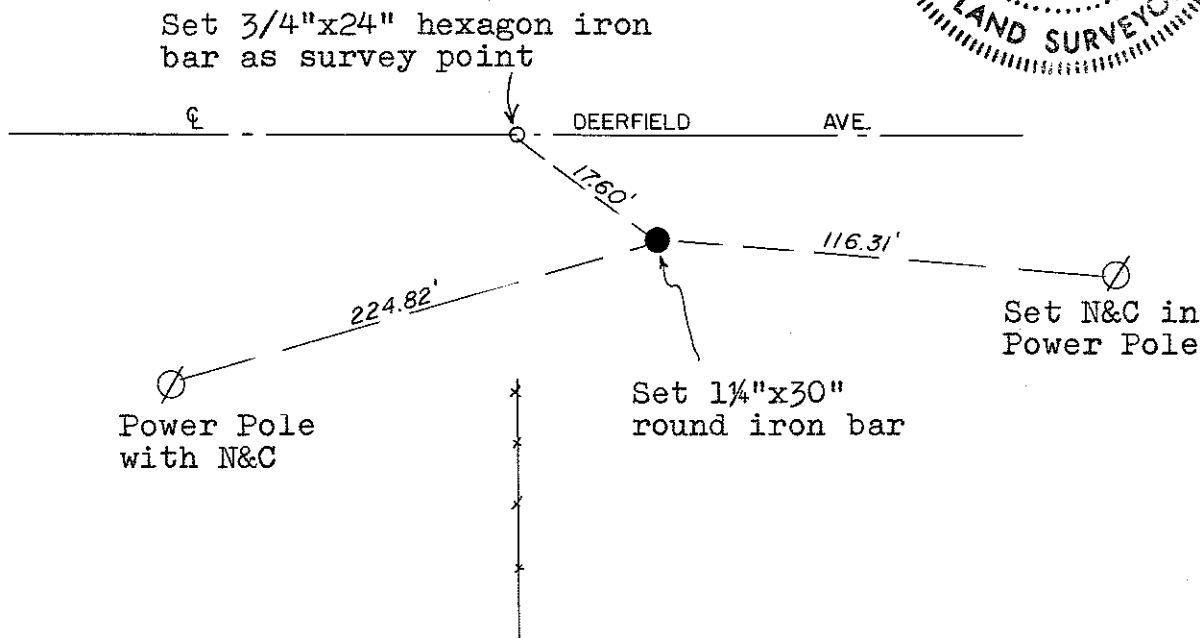


Description of corner and witness monuments, references and accessories used to perpetuate the original or re-established location of this corner:

Set a 1 1/4"x30" round iron bar.

Witnesses to corner location:

W. Jung  
G. Dechant



Approved: **HARLEY A. SIME**  
**MONROE CO. SURVEYOR**

SURVEY CONTROL ORDER

Horizontal	_____
Vertical	_____

WISCONSIN COORDINATE SYSTEM

Corner	East (X)	North (Y)	Elevation (Z)	Zone
Control Sta. Name				

City, Village or Town Leon  
County of Monroe

COUNTY SURVEYOR FORM NO. 1