

21604022000

I, Garold A. Sime, do hereby certify that on the 17th day of November 1988, I found ~~evidence~~ (no evidence) of the E/4 corner of Section 2, T16 N, R 4W Fourth Principal Meridian, and I re-established said corner according to the Wisconsin Statutes as shown and described hereon.

Dated this 29th day of Nov. 1988.

Garold A. Sime
Garold A. Sime, R.L.S.
Title

History of corner establishment since Original Government Survey

Fred Holden set a 1" iron pipe at this corner in January of 1910.
Doug Malliet found this iron pipe and referenced same the 13th of Feb., 1976.

Description of corner evidence found:

Mr. Harlan Lueck, a local resident informed me that the iron pipe at the corner was destroyed during utility construction. After searching for the iron pipe, which I could not find, I established this corner using the southerly and easterly ties that were provided by Mr. Malliet. Mr. Malliet's 16" Burr Oak has been cut down and it appears that his northwesterly tie to the corner post has been moved. I set a Harrison Monument at the location that I had established.

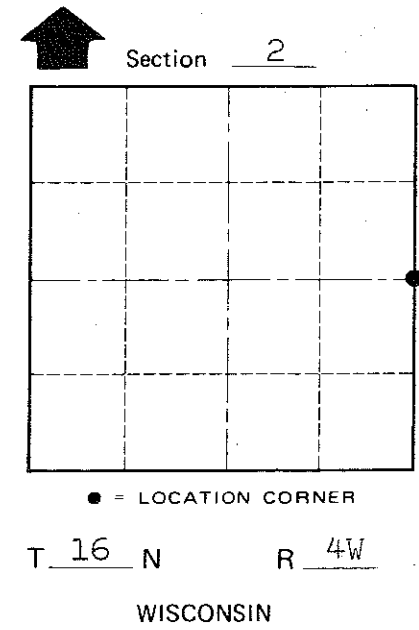
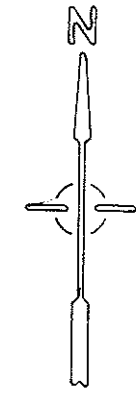
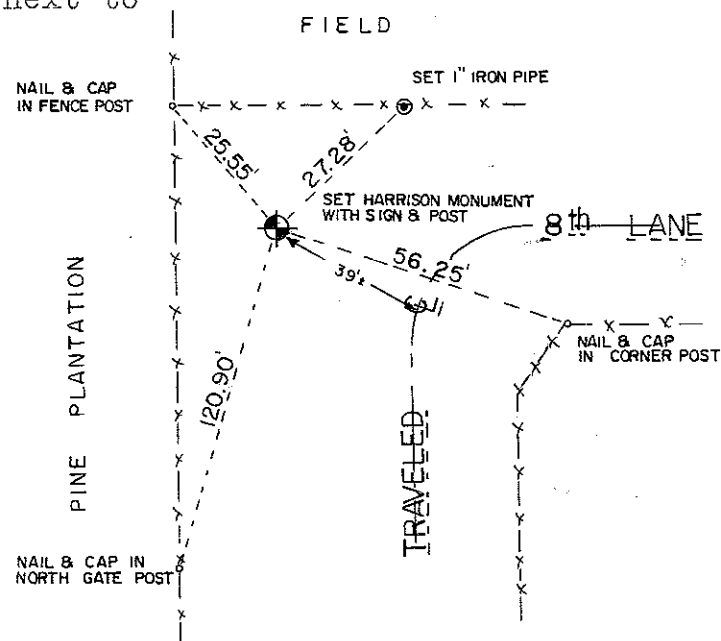
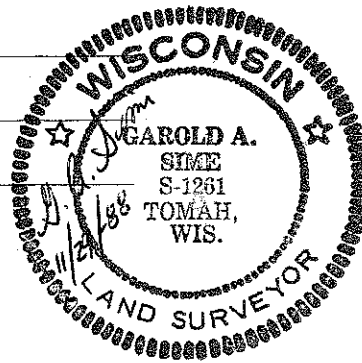
Description of corner and witness monuments, references and accessories used to perpetuate the original or re-established location of this corner:

Set Harrison Monument at corner, also set sign next to Harrison.

Witnesses to corner location:

Garold A. Sime, R.L.S.

Brian Forsythe



COUNTY SURVEYOR FORM NO. 1

SURVEY CONTROL ORDER

Horizontal _____
Vertical _____

WISCONSIN COORDINATE SYSTEM

Corner	East (X)	North (Y)	Elevation (Z)	Zone
Control Sta. Name				

City, Village or Town of Leon
County of Monroe

I, Harley A. Sime, do hereby certify that on the 13th day of February 1976, I found (evidence) (~~no evidence~~) of the W 1/4 corner of Section 1, T16 N, R 4 W Fourth Principal Meridian, and I re-established said corner according to the Wisconsin Statutes as shown and described hereon.

Dated this 5th day of Dec. 1977.

Harley A. Sime

County Surveyor

Title

History of original corner establishment:

Fred Holden, County Surveyor, set a 1" iron pipe at this corner in January of 1910.

Description of corner evidence found:

Existing 1" iron pipe monument.

**Approved: HARLEY A. SIME
MONROE CO. SURVEYOR**

COUNTY SURVEYOR FORM NO. 1

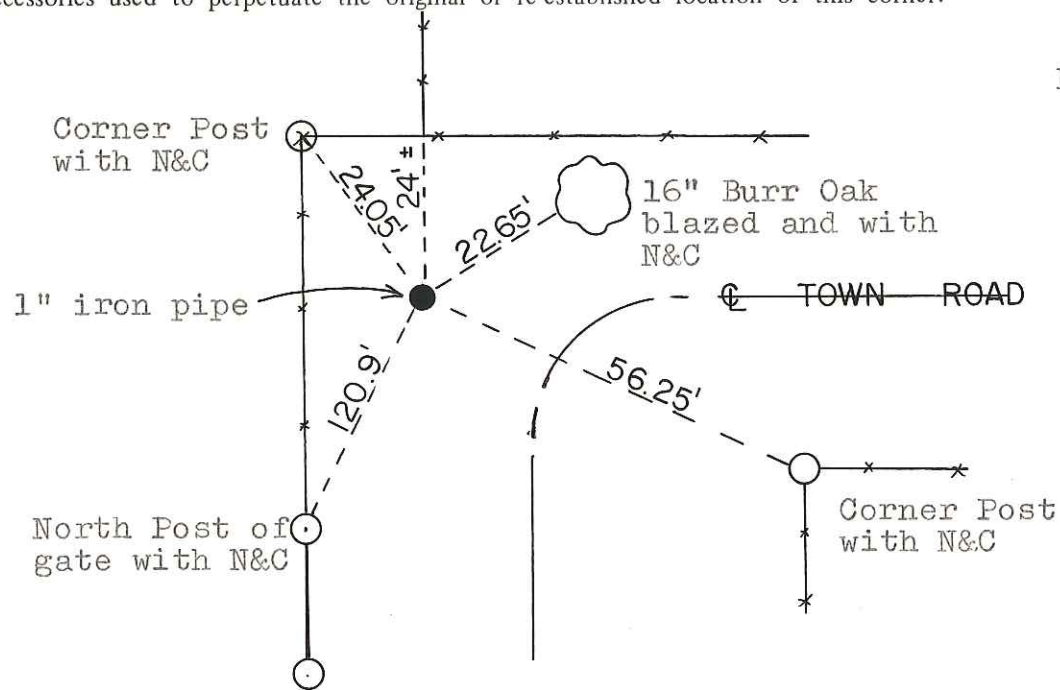
Description of corner and witness monuments, references and accessories used to perpetuate the original or re-established location of this corner:

Existing 1" iron pipe, up 1 1/2",
on line with road to East.

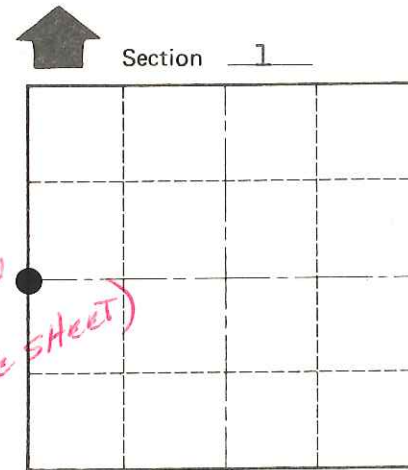
Witnesses to corner location:

D. Malliet-Crew Chief

A. Lueck



*RESET & New
TIES
(SEE OTHER TIE SHEET)*



O = LOCATION CORNER

T 16 N R 4 W

WISCONSIN

SURVEY CONTROL ORDER

Horizontal _____

Vertical _____

WISCONSIN COORDINATE SYSTEM

Corner	East (X)	North (Y)	Elevation (Z)	Zone
Control Sta. Name				

City, Village or Town Leon

County of Monroe