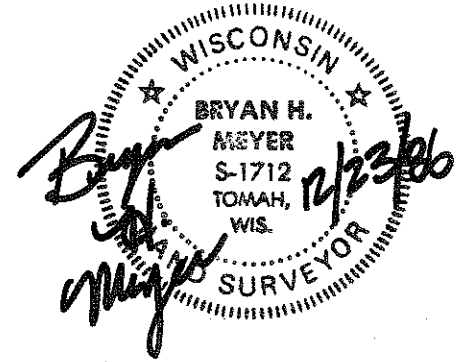


21604020020



I, Bryan H. Meyer, do hereby certify that on the 18th day of December 1986, I found (evidence) ~~of the~~ of the South 1/4 corner of Section 2, T 16 N, R 4 W Fourth Principal Meridian, and I re-established said corner according to the Wisconsin Statutes as shown and described hereon.

Dated this 23rd day of Dec. 1986.

Bryan H. Meyer

Deputy County Surveyor
Title

History of corner establishment since Original Government Survey

Fred A. Holden was here in November of 1909 and set a 1" iron pipe at the corner.

Description of corner evidence found:

I found Mr. Holden's 1" iron pipe, down 0.7+ feet, 1 foot+ Southeast of corner post.

COUNTY SURVEYOR FORM NO. 1

Description of corner and witness monuments, references and accessories used to perpetuate the original or re-established location of this corner:

Crew: Meyer, Kenworthy
Date: December 18, 1986 - 12:00 Noon
Weather: Overcast, 30°+, Merry Christmas!!
Witnesses to corner location:

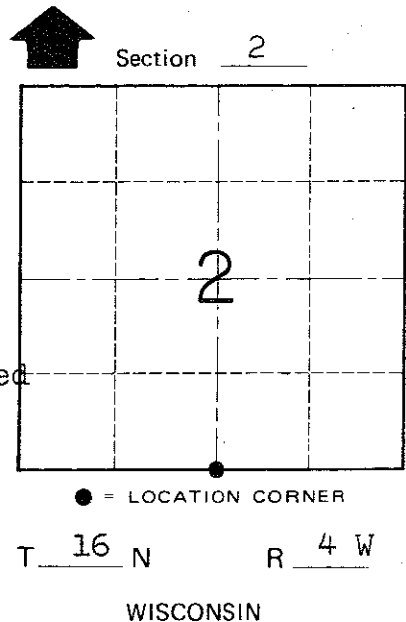
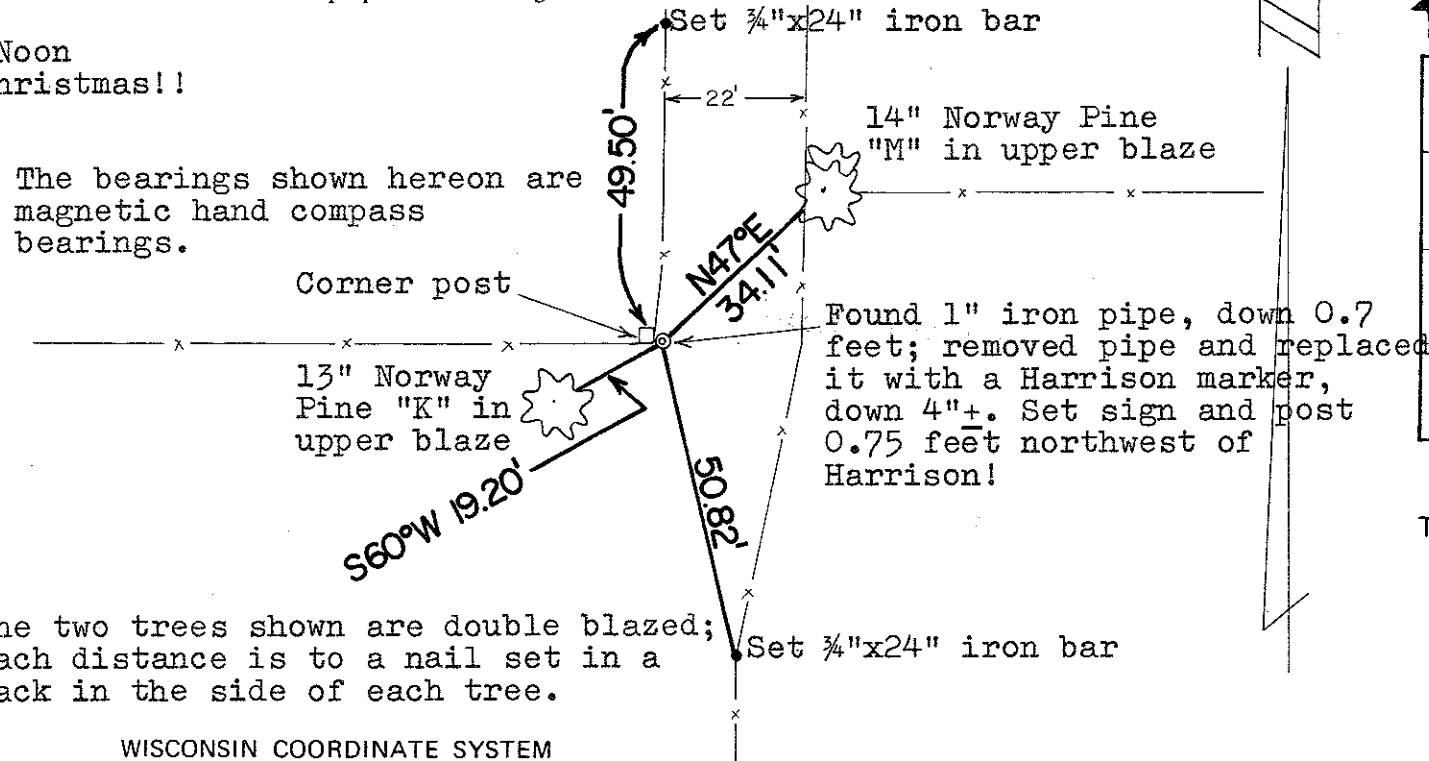
John Kenworthy

Bryan Meyer

The bearings shown hereon are magnetic hand compass bearings.

Corner post
13" Norway Pine "K" in upper blaze

The two trees shown are double blazed; each distance is to a nail set in a hack in the side of each tree.



SURVEY CONTROL ORDER

Horizontal _____
Vertical _____

WISCONSIN COORDINATE SYSTEM

Corner	East (X)	North (Y)	Elevation (Z)	Zone
Control Sta. Name				

~~City, Village or~~ Town of Leon

County of Monroe