

21604020000

I, Mark R. Heidecke, do hereby certify that on the 16th day of April 19 80, I found (evidence) (~~XXXXXXXX~~) of the Northwest corner of Section 12, T 16 N, R 4 W Fourth Principal Meridian, and I re-established said corner according to the Wisconsin Statutes as shown and described hereon.

Dated this 6th day of June 19 80.

Mark R. Heidecke

Registered Land Surveyor  
Title

History of corner establishment since Original Government Survey

After the Original U. S. Government Survey, Holden ran the East line of Section 11-T16N-R4W in January, 1910 and reestablished this corner.

Description of corner evidence found:

A Harrison monument was set in place of a 1" Axle found 24" below the surface in line of fences to the East and West.

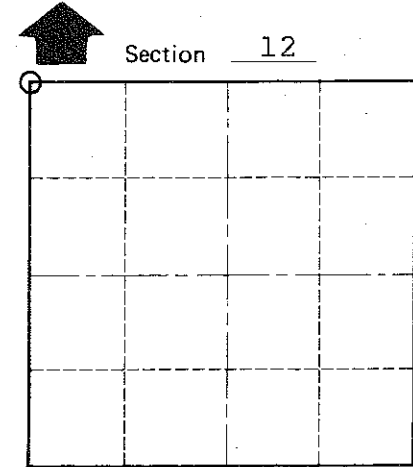
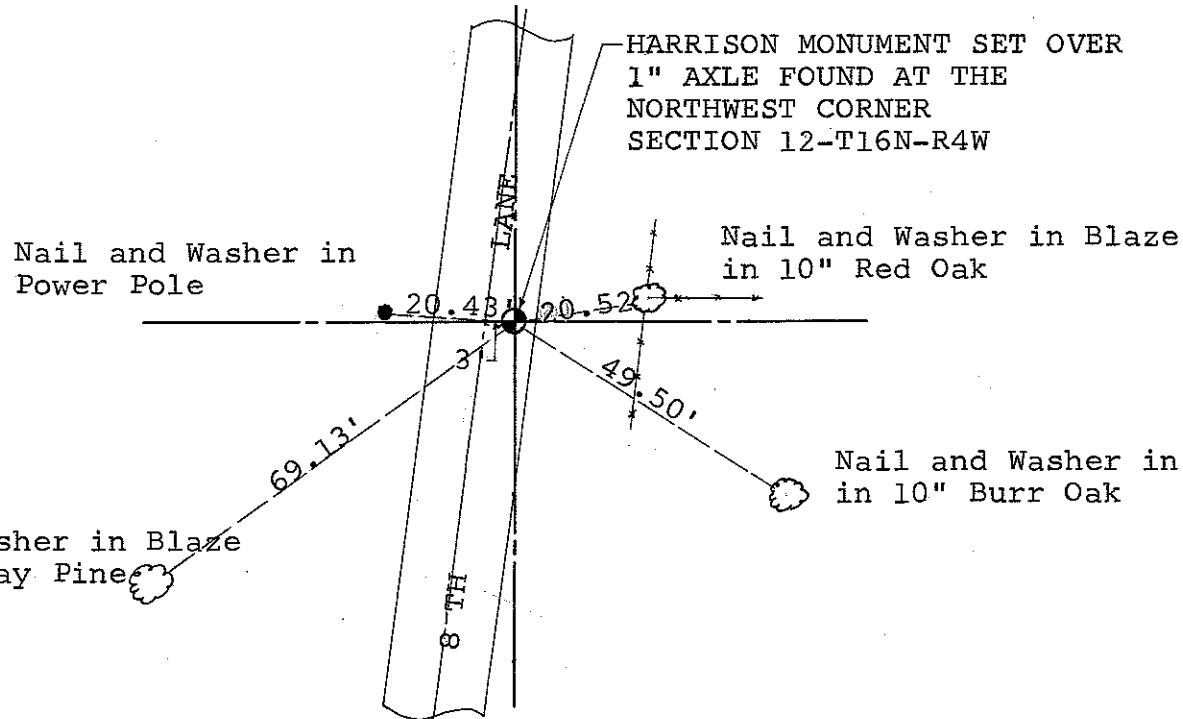
COUNTY SURVEYOR FORM NO. 1

Description of corner and witness monuments, references and accessories used to perpetuate the original or re-established location of this corner:

Witnesses to corner location:

Mark Heidecke

Lawrence Feddersen



O = LOCATION CORNER  
T 16 N R 4 W  
WISCONSIN

Nail and Washer in Blaze in 13" Norway Pine

Nail and Washer in Power Pole

Nail and Washer in Blaze in 10" Red Oak

Nail and Washer in Blaze in 10" Burr Oak

SURVEY CONTROL ORDER

Horizontal
Vertical

WISCONSIN COORDINATE SYSTEM

Corner	East. (X)	North (Y)	Elevation (Z)	Zone
Control Sta. Name				

~~XXXXXXXX~~ Town OF LEON

County of MONROE