

22

**U.S. PUBLIC LAND CORNER
MAINTENANCE**

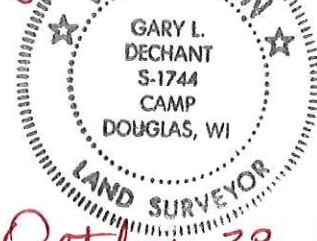
Corner ID : S1/4 Sec.1, T16N-R4W

21604010020

<u>DATE</u>	<u>CREW</u>	<u>MONUMENT TYPE -----</u>
May 6, 2015	Zachariah P. Dechant Gary L. Dechant	Existing Harrison intact, 185' west of Ideal Road & Jargon Ave intersection. Set new sign 1' west.

<u>References:</u>	<u>Bearing</u>	<u>Distance</u>
1) Set 3/4"x24" round iron bar, down 6", 3' north of 2" White Pine	N55E	25.36'
2) Set 3/4"x24" round iron bar, down 6", 10' NW of 14" Double Black Oak	S20E	26.62'
3) Set 3/4"x24" round iron bar, down 6", 5' SE of 14" Jack Pine (BT)	S40W	29.20'
4) Set 3/4"x24" round iron bar, down 6", between 14" & 12" Jack Pines	N57W	25.45'

Gary L. Dechant



October 28, 2015

I, Mark R. Heidecke, do hereby certify that on the 29th day of May 1980, I found ~~(evidence)~~ (no evidence) of the NORTH 1/4 corner of Section 12, T 16 N, R 4 W Fourth Principal Meridian, and I re-established said corner according to the Wisconsin Statutes as shown and described hereon.

Dated this 6th day of June 1980.

Mark R. Heidecke

Registered Land Surveyor
Title

History of corner establishment since Original Government Survey

There is no subsequent history of monument perpetuation since the Original U. S. Government Survey in Monroe County.

Description of corner evidence found:

A Harrison monument was set at the intersection of fence lines to the South and West. after finding no evidence of a monument.

UPDATE: Replaced existing 1 1/4" iron bar with Harrison Monument and referenced the corner as shown below.

Garold A. Sime
Monroe County Surveyor
May 3rd, 1990

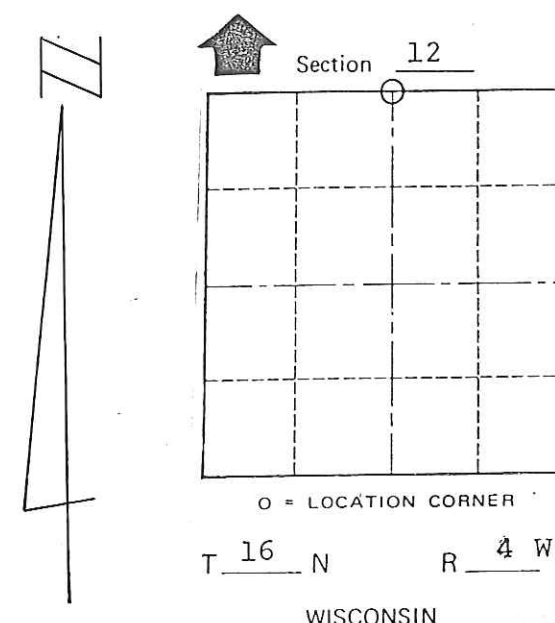
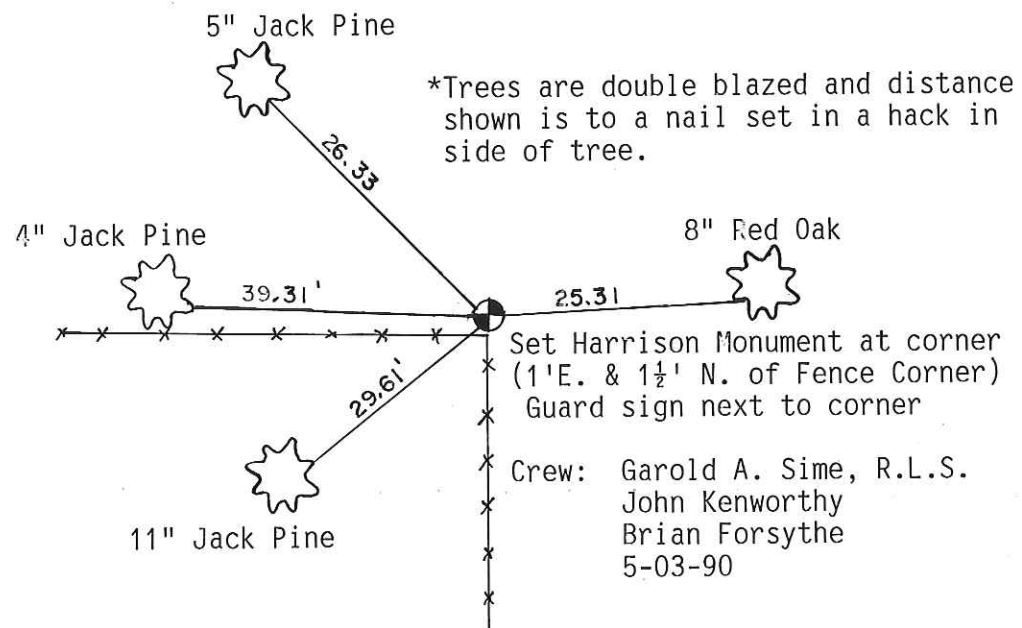
**See Reverse Side
For Maintenance**

Description of corner and witness monuments, references and accessories used to perpetuate the original or re-established location of this corner:

Witnesses to corner location:

Mark Heidecke

Lawrence Feddersen



COUNTY SURVEYOR FORM NO. 1

SURVEY CONTROL ORDER

Horizontal	
Vertical	

WISCONSIN COORDINATE SYSTEM

Corner	East (X)	North (Y)	Elevation (Z)	Zone
Control Sta. Name				

~~CITY OF LEON~~ Town OF LEON

County of MONROE

I, Mark R. Heidecke, do hereby certify that on the 29th day of May 19 80, I found ~~evidence~~ (no evidence) of the NORTH 1/4 corner of Section 12, T 16 N, R 4 W Fourth Principal Meridian, and I re-established said corner according to the Wisconsin Statutes as shown and described hereon.

Dated this 6th day of June 1980.

Mark R. Heidecke

Registered Land Surveyor
Title

History of corner establishment since Original Government Survey

There is no subsequent history of monument perpetuation since the Original U. S. Government Survey in Monroe County.

Description of corner evidence found:

A Harrison monument was set at the intersection of fence lines to the South and West after finding no evidence of a monument.

See Reverse Side For Maintenance

Description of corner and witness monuments, references and accessories used to perpetuate the original or re-established location of this corner:

Witnesses to corner location:

Mark Heidecke

Lawrence Feddersen

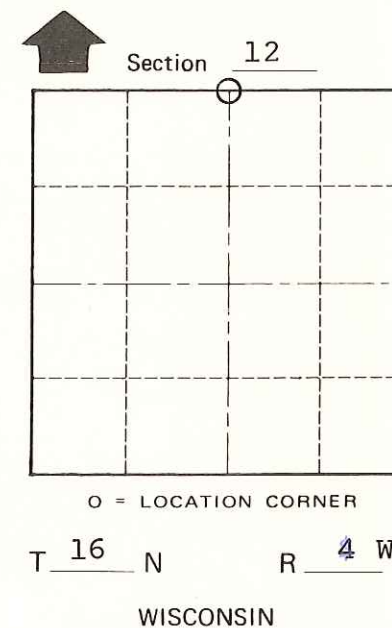
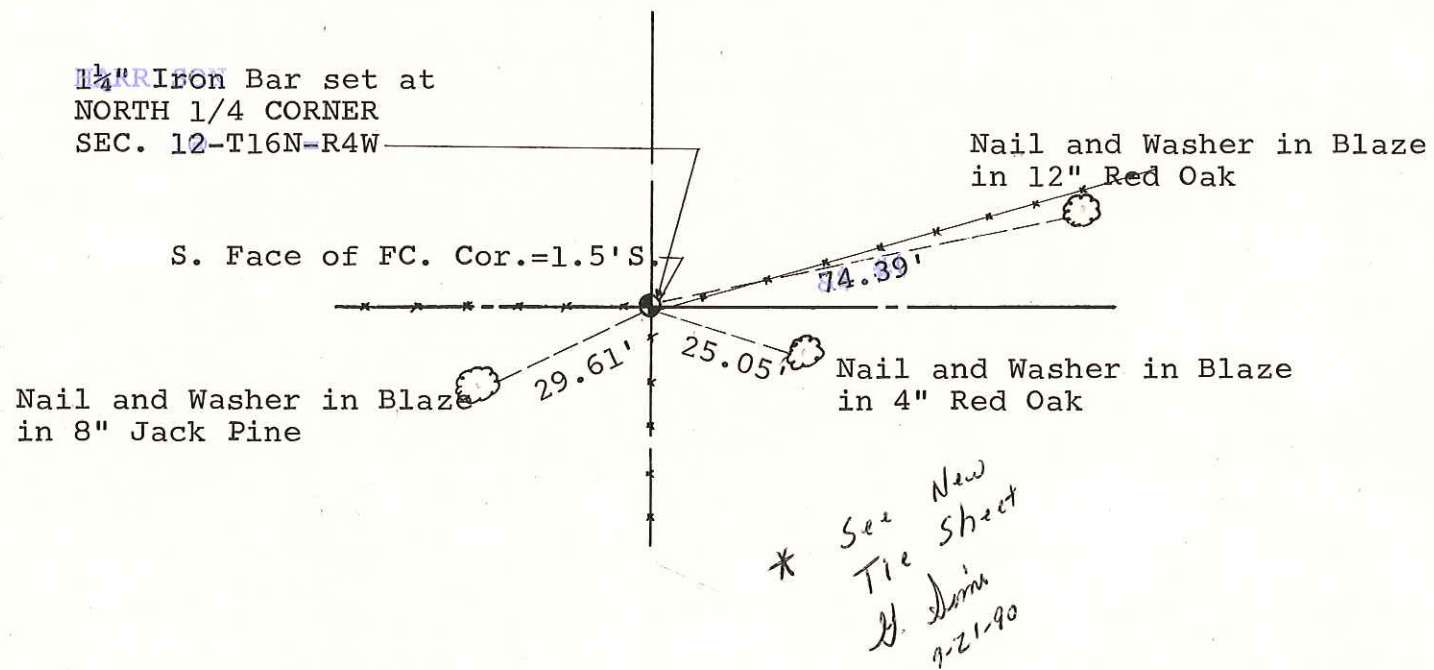
~~1/4~~ Iron Bar set at NORTH 1/4 CORNER SEC. 12-T16N-R4W

S. Face of FC. Cor.=1.5'S

Nail and Washer in Blaze in 12" Red Oak

Nail and Washer in Blaze in 8" Jack Pine

Nail and Washer in Blaze in 4" Red Oak



COUNTY SURVEYOR FORM NO. 1

SURVEY CONTROL ORDER

Horizontal	<u>15</u>
Vertical	<u>15</u>

WISCONSIN COORDINATE SYSTEM

Corner	East (X)	North (Y)	Elevation (Z)	Zone
Control Sta. Name				

~~City of Leon~~ Town OF LEON
County of MONROE