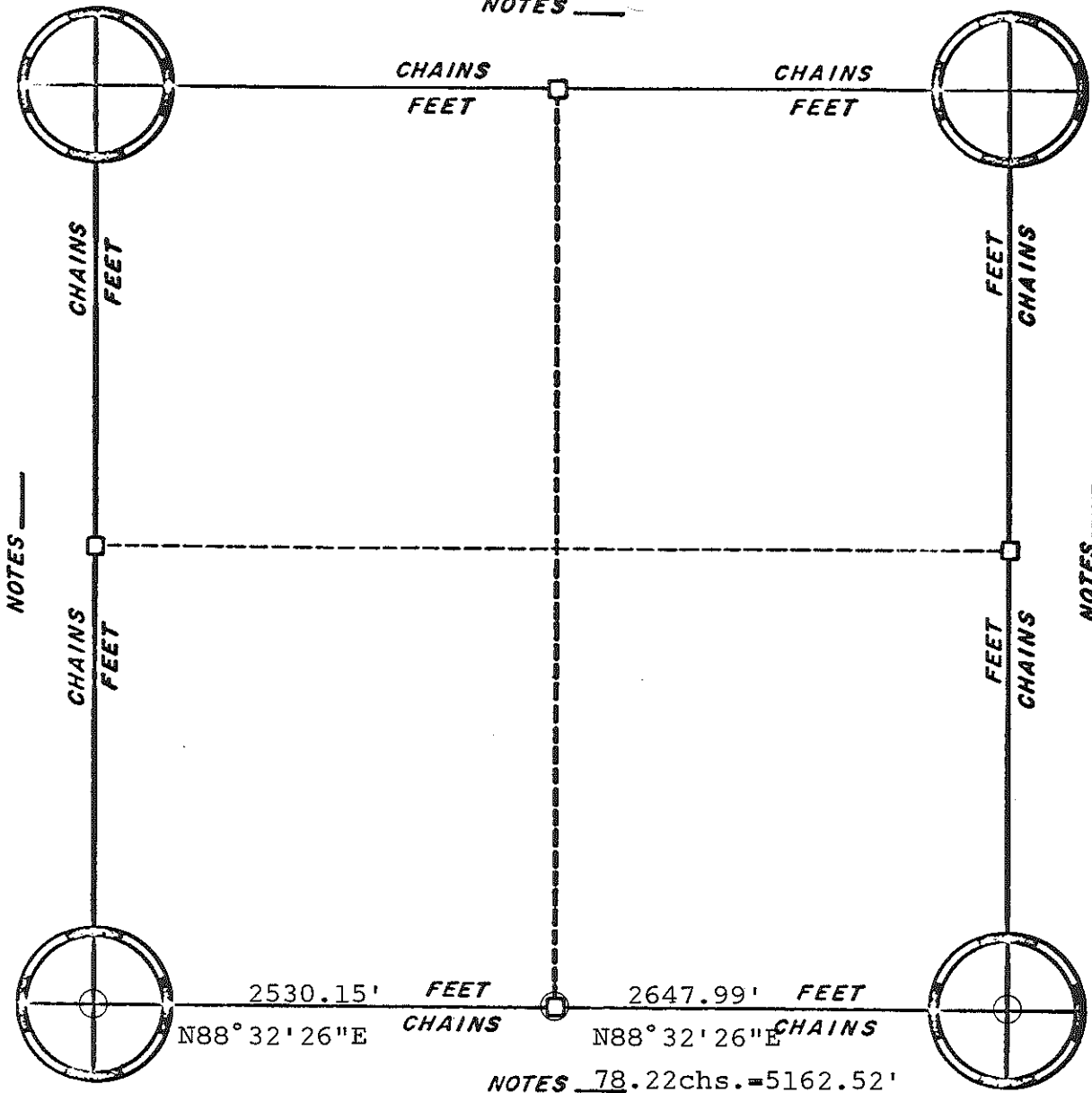


NOTES _____

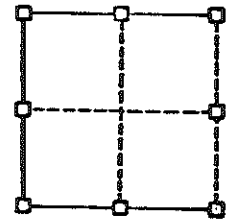


NOTES _____

NOTES _____



CORNERS



RE-ESTABLISHED

○ HARRISON MONUMENTS

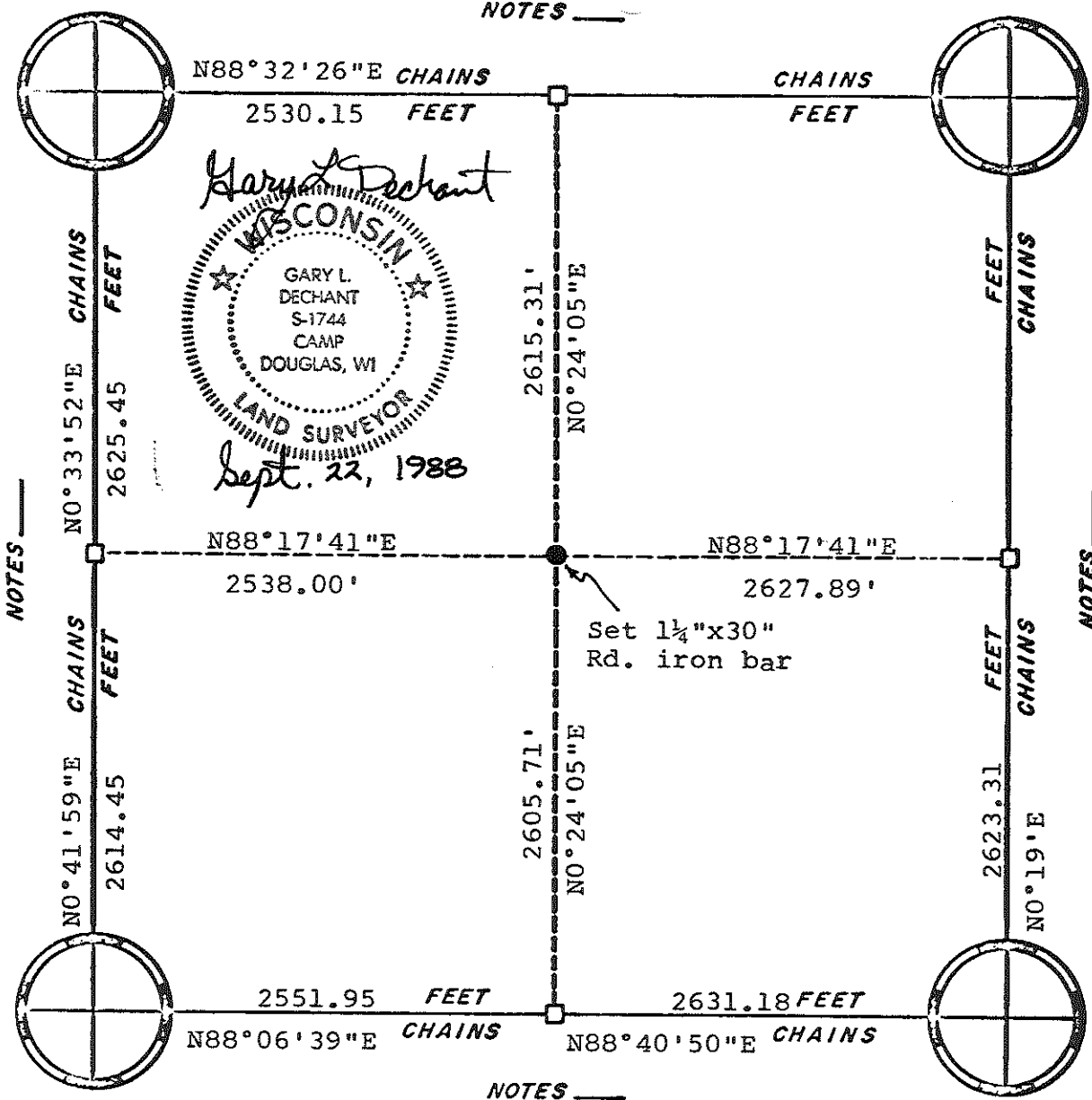
NOTES 78.22chs. = 5162.52'

ORIGINAL SURVEY DATA

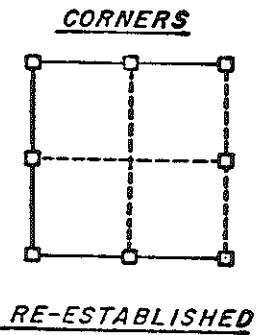
BY _____
DATE _____

SURVEYED BY Feddersen Eng. & Surveying	CONTRACT DATE June, 1980	COUNTY MONROE ██████████	TOWN-VILLAGE-CITY WELLS	SECTION 6	TOWNSHIP 16 N	RANGE 3 W
--	-----------------------------	-----------------------------	----------------------------	--------------	------------------	--------------

NOTES _____



ASSUMED BEARINGS



NOTES _____

ORIGINAL SURVEY DATA

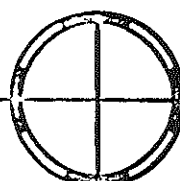
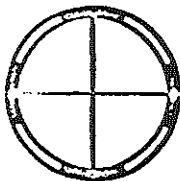
BY _____
DATE _____

SURVEYED BY	CONTRACT DATE	COUNTY MONROE	TOWN-VILLAGE-CITY	SECTION	TOWNSHIP	RANGE
G. L. Dechant	Sept. 22, 1988	██████████	Wells	7	16N	3W

Stone & Harrison Monument

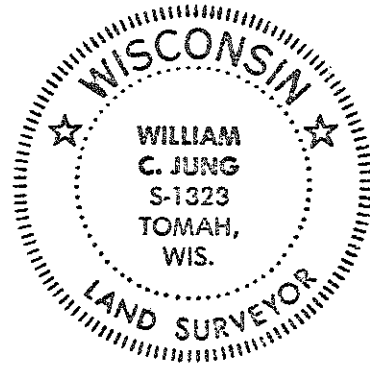
NOTES
S88°04'47"E 5218.35'

Harrison Monument



5254.82' CHAINS
2627.41 FEET

Did not go to this corner at this time



2650.50 FEET CHAINS
5301.00'



Harrison Monument

NOTES

N87°49'38"W

5232.47'

Harrison Monument

NOTES

N 1°57'12"E CHAINS
2627.41 FEET

2650.50 FEET CHAINS
S 1°38'55"W

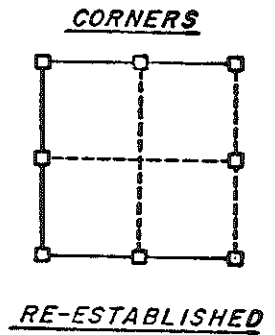
Harrison Monument

2621.10 FEET
N87°03'05"W CHAINS

2625.83 FEET
N88°05'59"W CHAINS

Harrison Monument

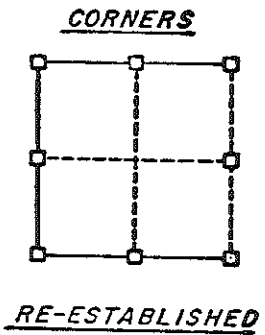
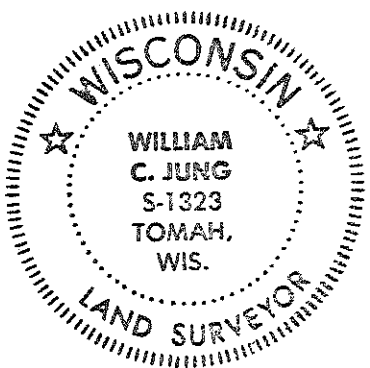
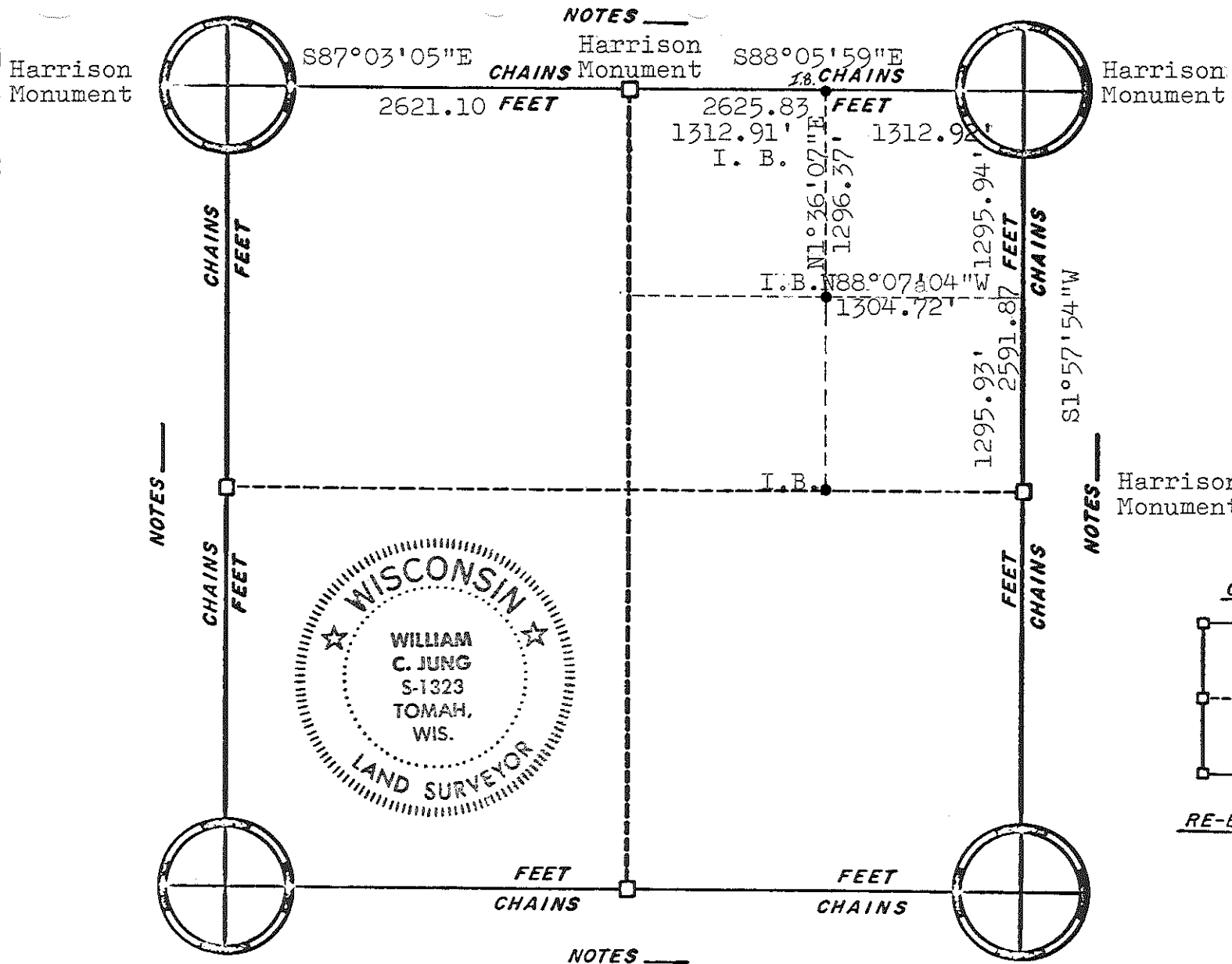
Harrison Monument
NOTES



ORIGINAL SURVEY DATA

BY _____
DATE 3/19/81

SURVEYED BY W. C. Jung	CONTRACT DATE April, 1979	COUNTY MONROE _____	TOWN VILLAGE CITY Wells	SECTION 11	TOWNSHIP T16N	RANGE R3W
---------------------------	------------------------------	------------------------	---------------------------------------	---------------	------------------	--------------



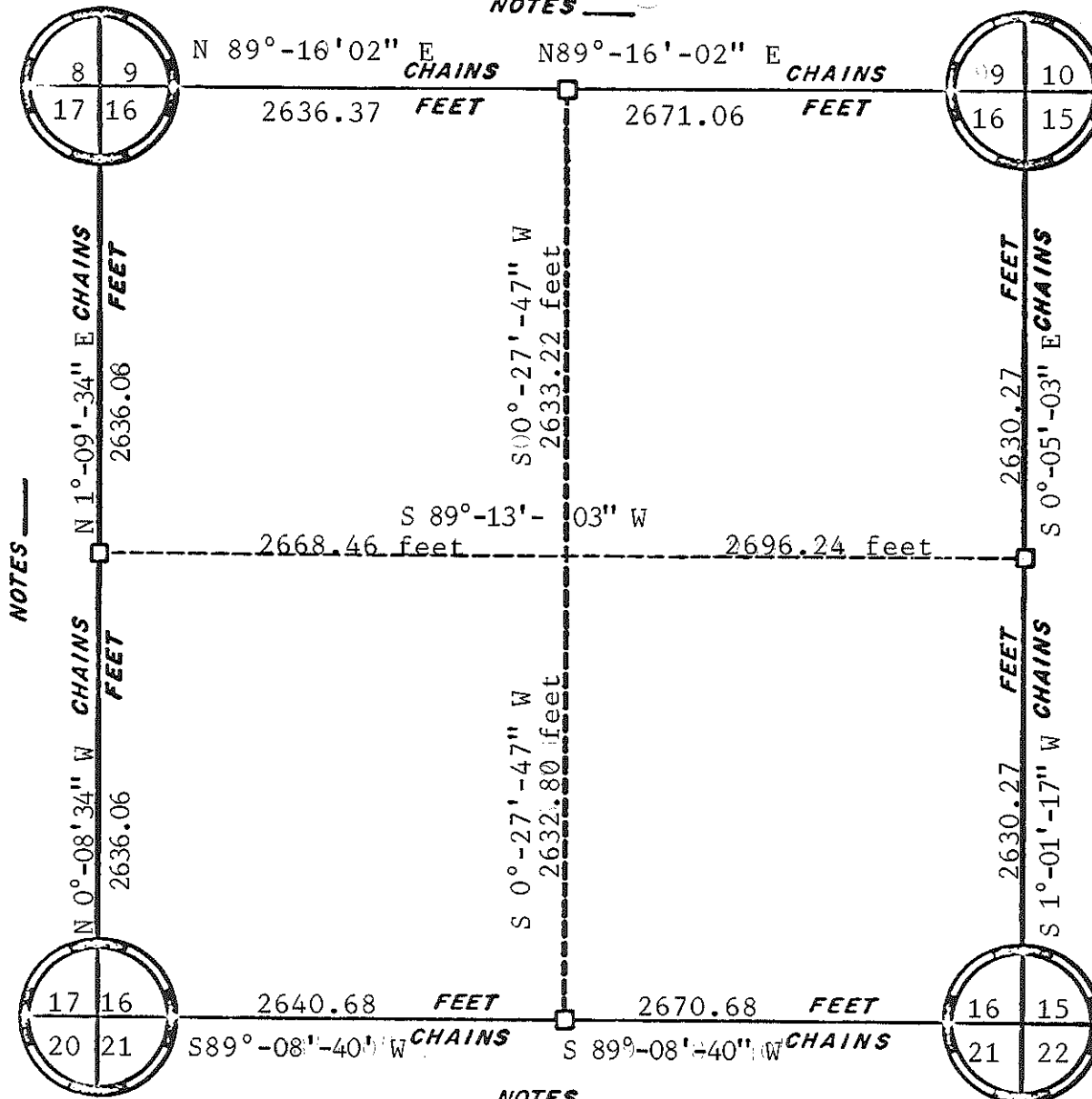
ORIGINAL SURVEY DATA

BY _____
DATE 3/19/81

SURVEYED BY W. C. Jung	CONTRACT DATE April, 1979	COUNTY MONROE	TOWN VILLAGE CITY Wells	SECTION 14	TOWNSHIP T16N	RANGE R3W
---------------------------	------------------------------	---------------	---------------------------------------	---------------	------------------	--------------

Bearings referenced to the North line of Section 16
 Assumed to bear N 89°-16'-02" E

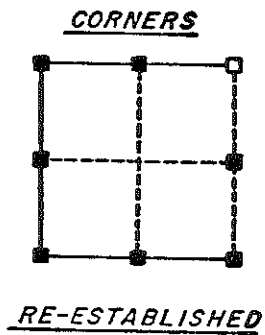
NOTES



NOTES

NOTES

NOTES

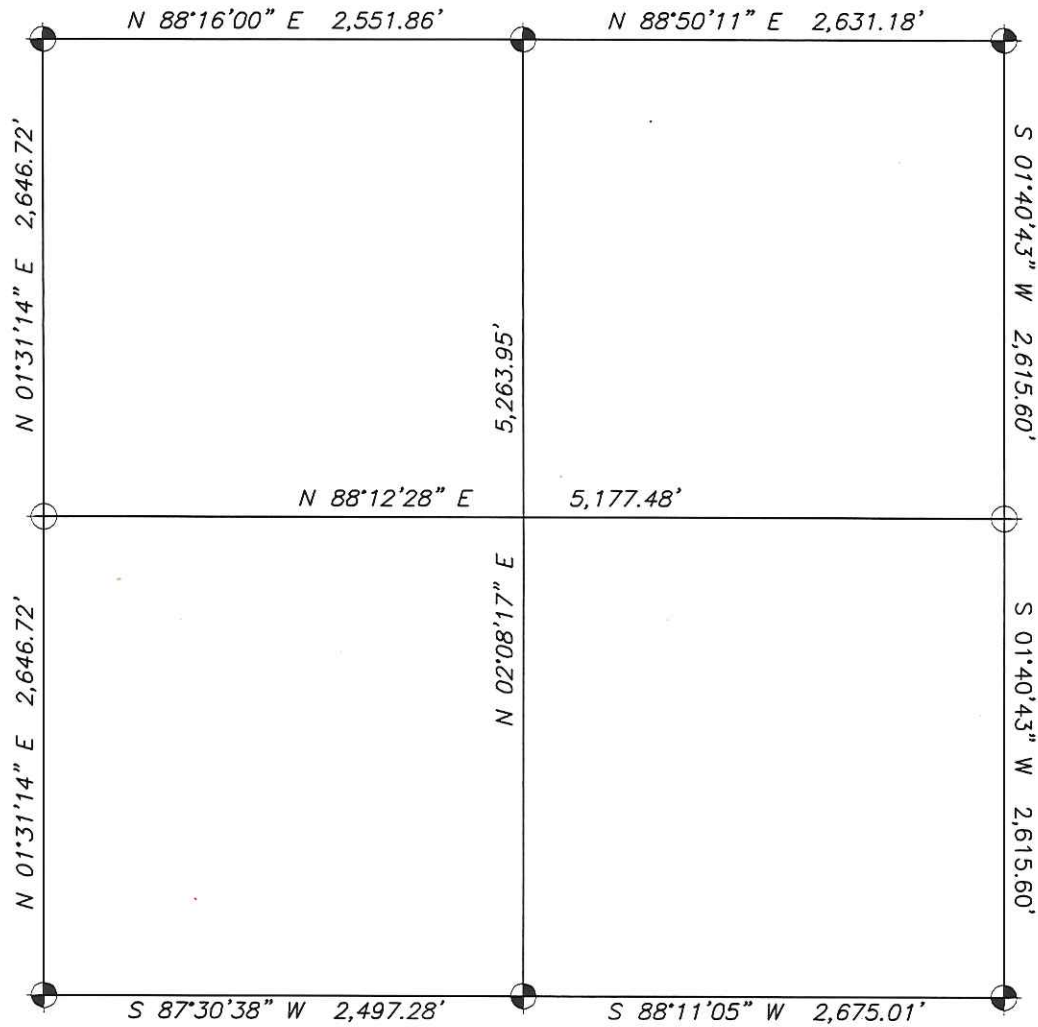


ORIGINAL SURVEY DATA

BY [REDACTED]
 DATE 9/4/87

SURVEYED BY <i>Ronald Parish</i> Ronald Parish	CONTRACT DATE	COUNTY MONROE	TOWN-VILLAGE-CITY WELLS	SECTION 16	TOWNSHIP 16 N.	RANGE 3 W.
--	---------------	---------------	----------------------------	---------------	-------------------	---------------

SECTION SUMMARY FOR SECTION 18, T16N, R3W



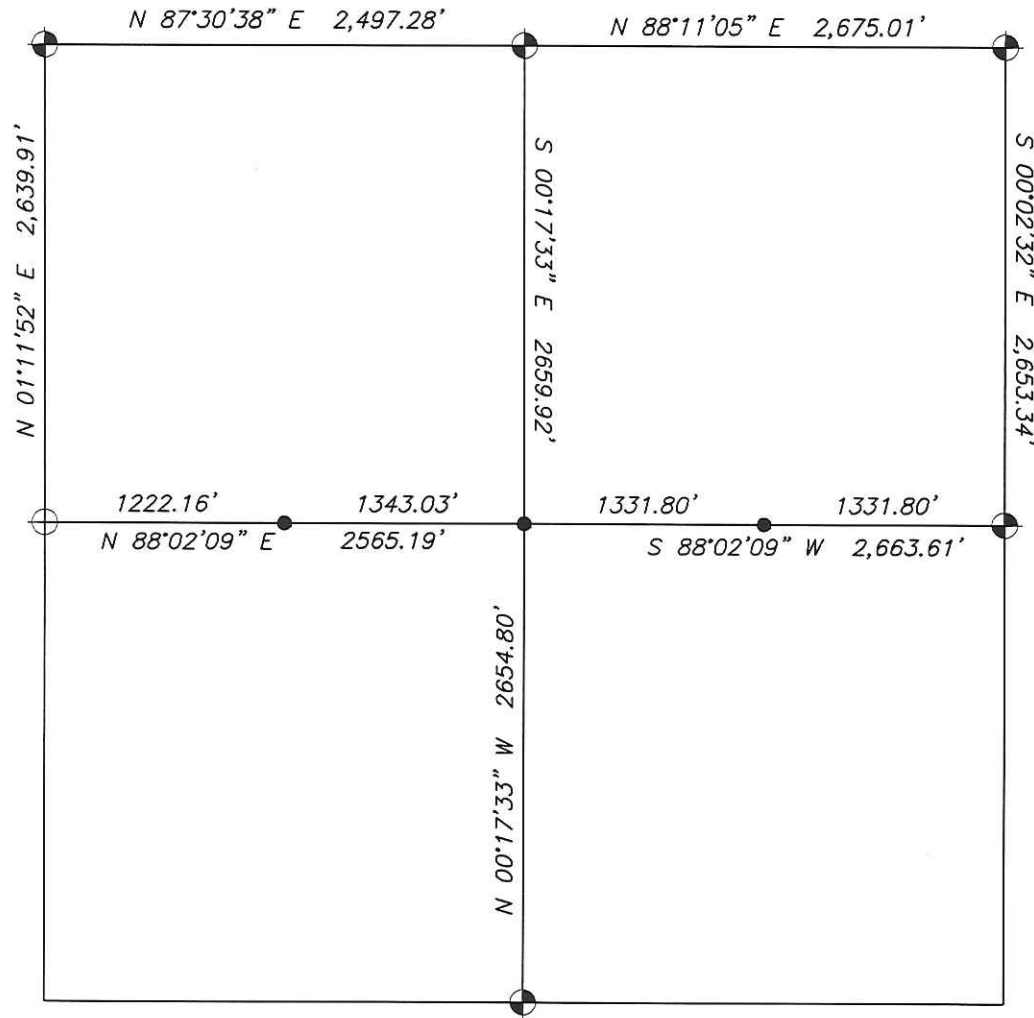
LEGEND

- ⊕ HARRISON MONUMENT SET
- ⊙ HARRISON MONUMENT FOUND



SURVEYED BY: SCHMITZ RLS 2465	CONTRACT DATA:	COUNTY: MONROE	TOWN OF WELLS	SECTION 18	TOWNSHIP 16N	RANGE 3W
----------------------------------	----------------	-------------------	------------------	---------------	-----------------	-------------

SECTION SUMMARY FOR SECTION 19, T16N, R3W



LEGEND

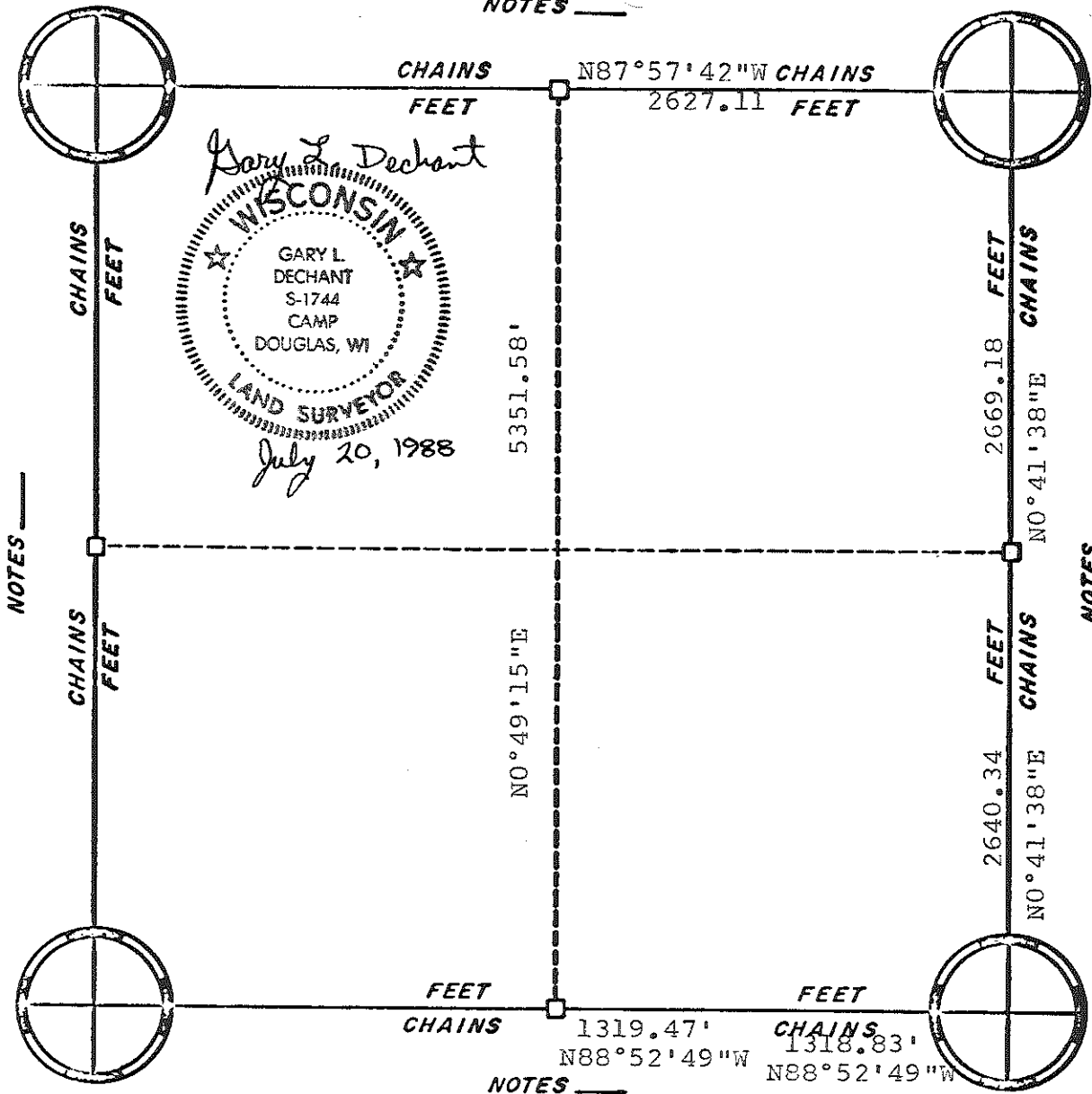
- ⊕ TO BE MONUMENTED BY COUNTY
- ⊗ HARRISON MONUMENT FOUND
- 3/4"X18" REBAR SET



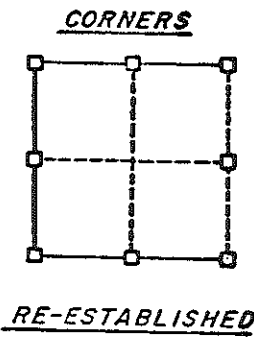
10/07/04

SURVEYED BY: SCHMITZ RLS 2465	CONTRACT DATA:	COUNTY: MONROE	TOWN OF WELLS	SECTION 19	TOWNSHIP 16N	RANGE 3W
----------------------------------	----------------	-------------------	------------------	---------------	-----------------	-------------

NOTES _____



Gary L. Dechant
 WISCONSIN
 GARY L. DECHANT
 S-1744
 CAMP DOUGLAS, WI
 LAND SURVEYOR
July 20, 1988



NOTES _____

NOTES _____

NOTES _____

ORIGINAL SURVEY DATA

BY _____
 DATE _____

SURVEYED BY G.L. Dechant	CONTRACT DATE July 20, 1988	COUNTY MONROE ██████████	TOWN-VILLAGE-CITY Wells	SECTION 29	TOWNSHIP T16N	RANGE R3W
-----------------------------	--------------------------------	-----------------------------	----------------------------	---------------	------------------	--------------