

21603362000

I, Garold A. Sime, do hereby certify that on the 11th day of December 1990, I found (evidence) (~~no evidence~~) of the E $\frac{1}{2}$  corner of Section 36, T 16 N, R 3 W Fourth Principal Meridian, and I re-established said corner according to the Wisconsin Statutes as shown and described hereon.

Dated this 21st day of Dec. 19 90.

Garold A. Sime

Monroe County Surveyor  
Title

History of corner establishment since Original Government Survey

No history of corner location since the Original Government Survey

Description of corner evidence found:

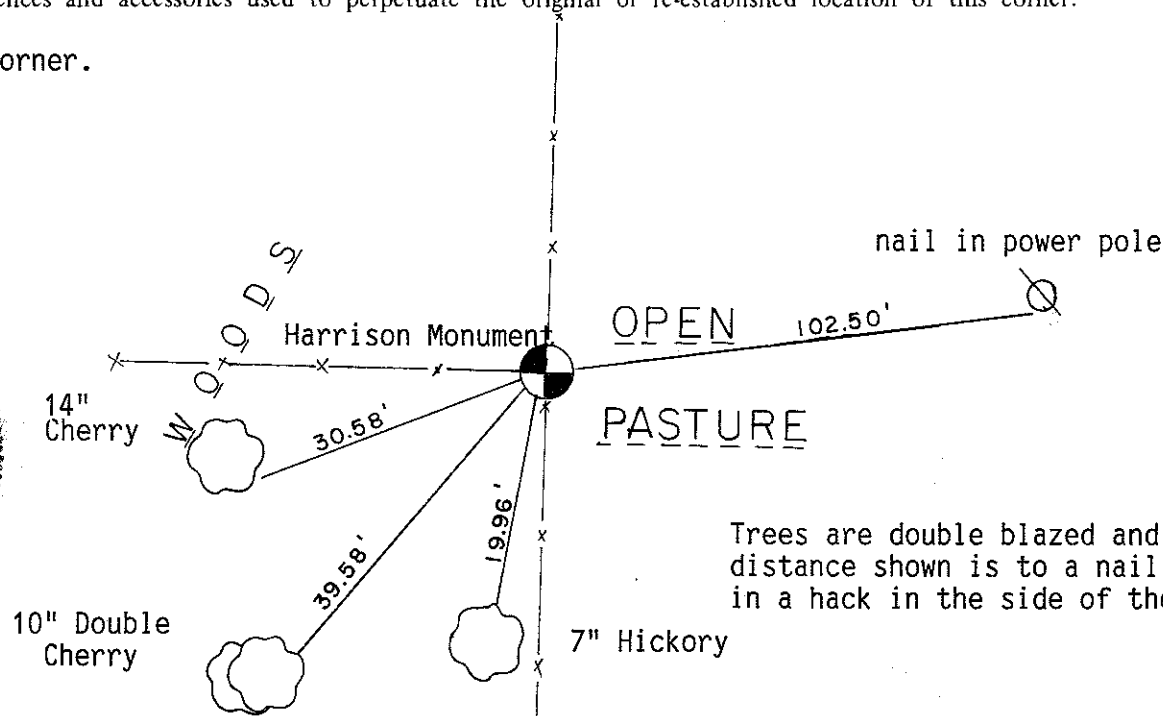
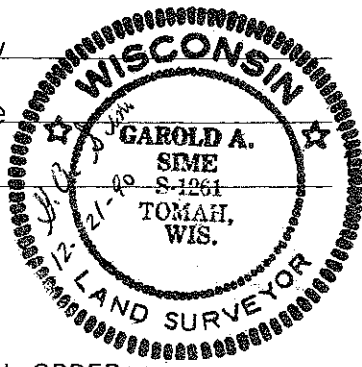
I accepted the existing fence corner as the best available evidence of corner location.

Description of corner and witness monuments, references and accessories used to perpetuate the original or re-established location of this corner:

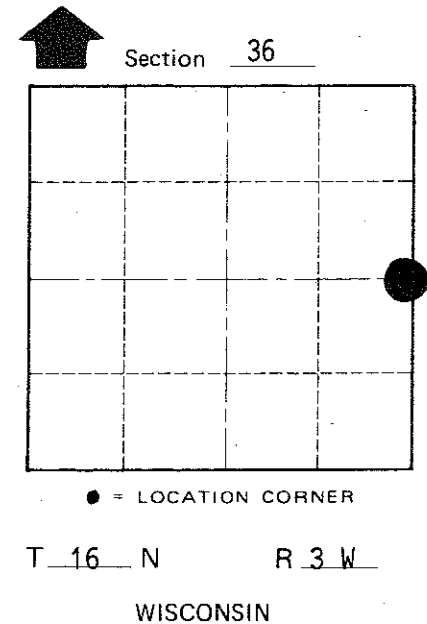
Set Cast Iron Harrison Monument at corner.  
Set Guard Sign next to Harrison.

Witnesses to corner location:

Garold A. Sime, R.L.S.  
Bryan Meyer  
John Kenworthy  
Brian Forsythe



Trees are double blazed and the distance shown is to a nail set in a hack in the side of the tree.



SURVEY CONTROL ORDER

Horizontal	_____
Vertical	_____

Corner	East (X)	North (Y)	Elevation (Z)	Zone
Control Sta. Name				

City, Village or Town of Wells

County of Monroe

COUNTY SURVEYOR FORM NO. 1