

21603360000

I, Bryan H. Meyer, do hereby certify that on the 11th day of December 1990, I found (evidence) ~~(xxxxxxx)~~ of the Southwest corner of Section 31, T 16 N, R 2 W Fourth Principal Meridian, and I re-established said corner according to the Wisconsin Statutes as shown and described hereon.

Dated this 21st day of Dec. 1990.

Bryan H. Meyer

Deputy Monroe County Surveyor
Title

History of corner establishment since Original Government Survey

No history of corner location recorded since the Original Government Survey.

Description of corner evidence found:

I accepted the existing fence corner as the best available evidence of corner location.

COUNTY SURVEYOR FORM NO. 1

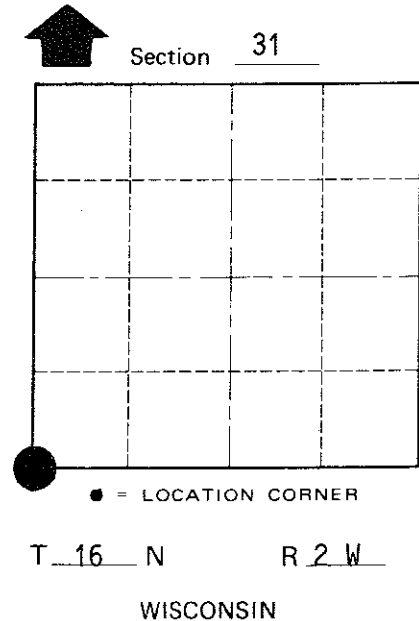
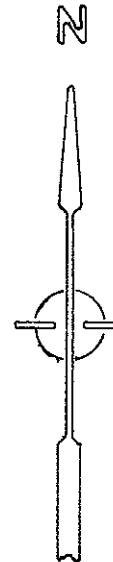
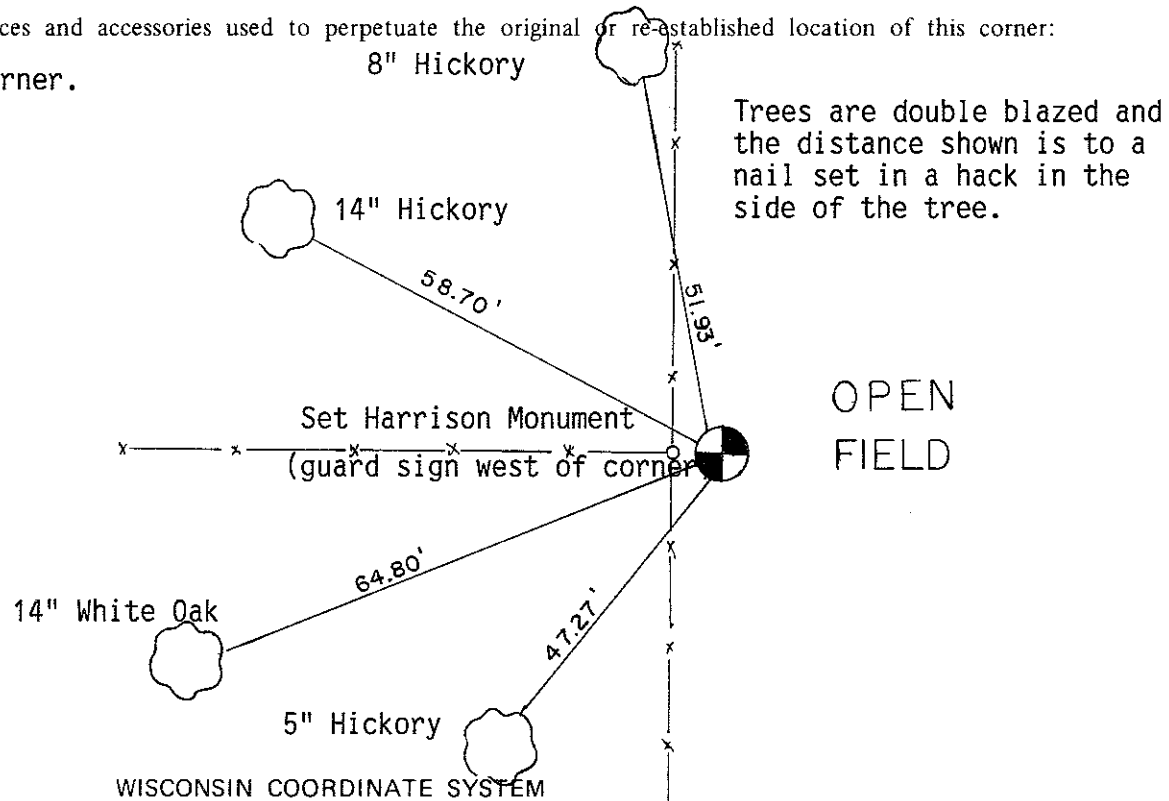
Description of corner and witness monuments, references and accessories used to perpetuate the original or re-established location of this corner:

Set cast iron Harrison Monument at corner.
Set guard sign next to corner

Witnesses to corner location:

Bryan H. Meyer, R.L.S.

John F. Kenworthy



SURVEY CONTROL ORDER

Horizontal	_____
Vertical	_____

Corner	East (X)	North (Y)	Elevation (Z)	Zone
Control Sta. Name				

City, Village or Town of Ridgeville
County of Monroe