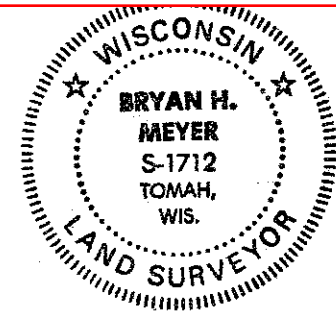


21603350020



H. A. Sime and Associates
P. O. Box 705
Tomah, Wisconsin 54660
Phone: (608)-372-5392

I, Bryan H. Meyer, do hereby certify that on the 2nd day of July 19 91, I found (evidence) ~~no evidence~~ of the North 1/4 corner of Section 2, T 15 N, R 3 W Fourth Principal Meridian, and I re-established said corner according to the Wisconsin Statutes as shown and described hereon.

Dated this 22nd day of Aug. 19 91.
Bryan H. Meyer
Deputy County Surveyor
Title

History of corner establishment since Original Government Survey

Nothing recorded.

Description of corner evidence found:

I set this corner on line between the Northwest and Northeast corners of Section 2 and on line with a fence line projection from the North.

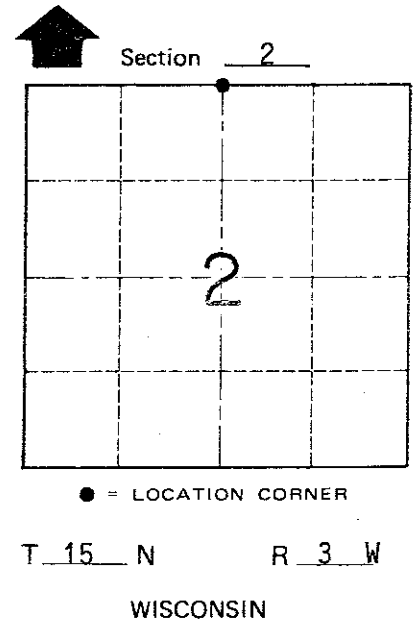
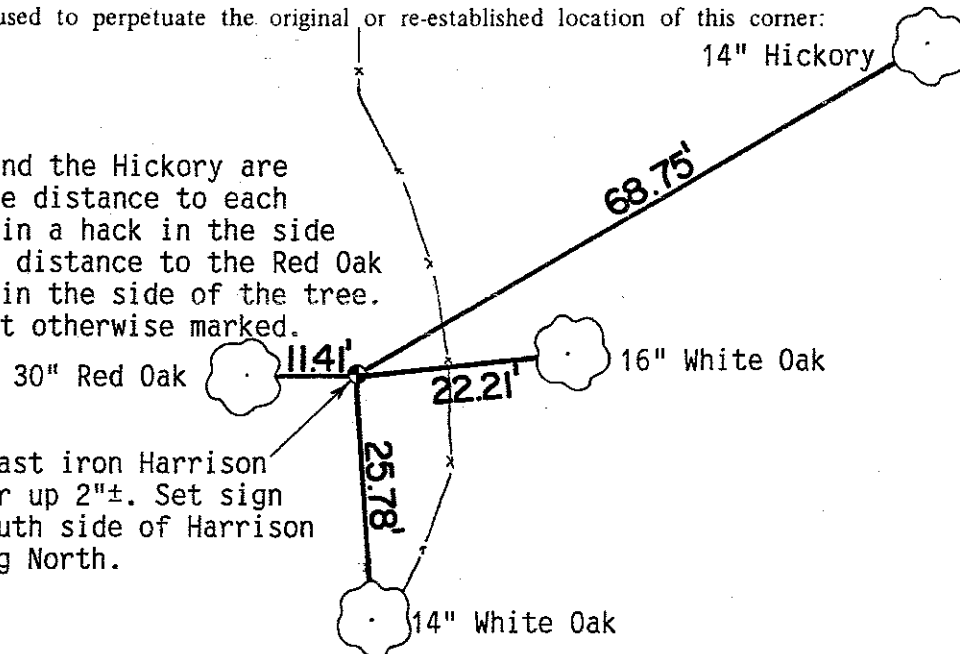
Description of corner and witness monuments, references and accessories used to perpetuate the original or re-established location of this corner:

Crew: Meyer, Kenworthy
Date: July 2, 1991
Weather: Clear, Humid, 80°±.
Witnesses to corner location:

- John Kenworthy
- Mr. Blashaski
- Bryan H. Meyer

Both White Oaks and the Hickory are double blazed; the distance to each is to a nail set in a hack in the side of each tree. The distance to the Red Oak is to a nail set in the side of the tree. The Red Oak is not otherwise marked.

Set cast iron Harrison marker up 2"±. Set sign on South side of Harrison facing North.



COUNTY SURVEYOR FORM NO. 1

SURVEY CONTROL ORDER

Horizontal _____
Vertical _____

WISCONSIN COORDINATE SYSTEM

Corner	East (X)	North (Y)	Elevation (Z)	Zone
Control Sta. Name				

~~Village~~ Town of Jefferson
County of Monroe