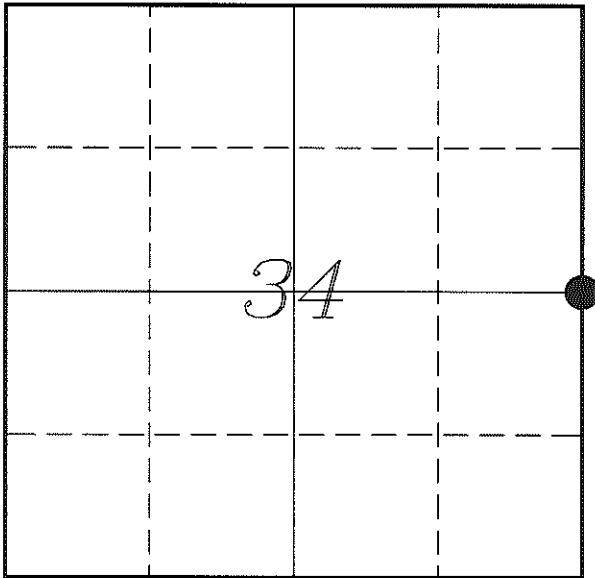

U. S. PUBLIC LAND SURVEY MONUMENT RECORD

SECTION 34, T16N, R3W, TOWN OF WELLS MONROE COUNTY, WISCONSIN



LOCATION OF LANDMARK

Witnesses: Laurence E Johns III

Date: 2 August 2013

<i>MONROE COUNTY COORDINATE SYSTEM</i>	
<i>Northing</i>	<i>334488.816</i>
<i>Easting</i>	<i>652646.219</i>
<i>Datum</i>	<i>NAD 1983 (1991)</i>
<i>Elevation</i>	
<i>Datum</i>	
<i>TYPE OF LANDMARK:</i>	
<i>Set Harrison Monument</i>	
<i>BEARINGS ARE REFERENCED TO:</i>	
<i>Monroe County Coordinates</i>	

Describe any record evidence, monument evidence, testimonial evidence or any other material evidence you considered and whether the monument was found or restored through acceptance of an obliterated evidence location.

No bearing trees of record were located.

I found no evidence of occupation in relation to this corner. The same landowner owns property on all sides of this corner.

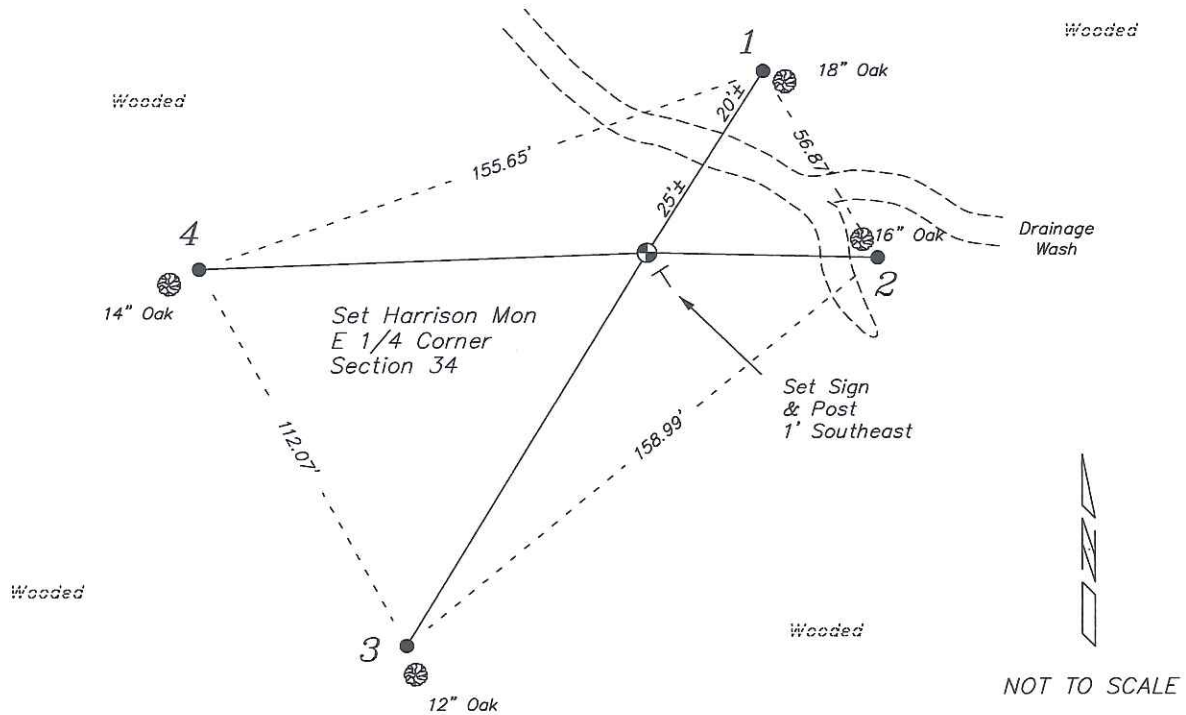
I found no evidence of this corner, therefore I set a Harrison Monument at the straight-line and split distance as the best representation of the original government corner.

Describe or show any material discrepancy between the location of the restored corner and that of the corner previously restored or re-established.

Henry Maddin established this corner in February 1847.

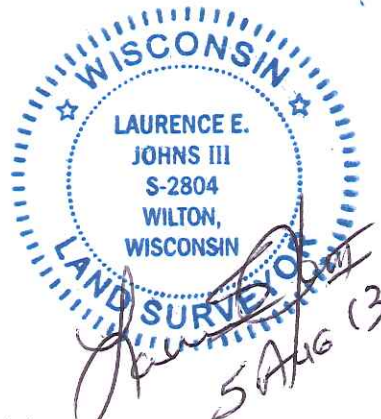
RECORD OF DURABLE WITNESS MONUMENTS

NO	DESCRIPTION	BEARING	DISTANCE
1	Set 3/4" x 18" Iron Rod 2' Southeast of a 18" White Oak	N 32°48'44" E	56.10'
2	Set 3/4" x 18" Iron Rod 2' Northwest of a 16" White Oak	S 88°42'37" E	60.11'
3	Set 3/4" x 18" Iron Rod 2' North of a 12" White Oak	S 31°30'35" W	120.02'
4	Set 3/4" x 18" Iron Rod 2' East of a 14" White Oak	S 88°00'52" W	116.66'



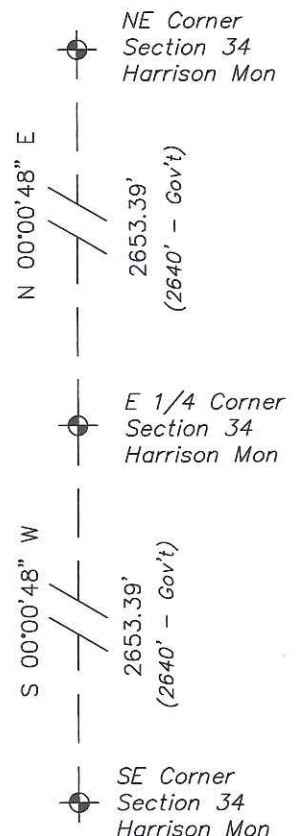
PLAN VIEW DRAWING OF REFERENCE TIES

Map Showing Distance And Direction To Other Public Land Survey
Corners Used For Re-Establishing The Corner



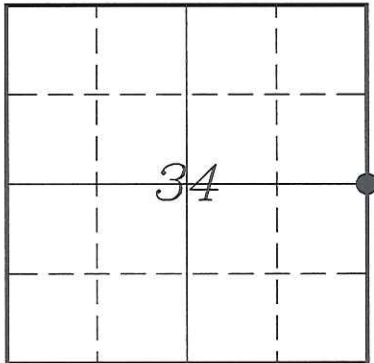
I, Laurence E Johns III RLS 2804, Registered Land Surveyor, hereby certify that the corner location shown on this record was determined by me or under my direction and control, and that this U.S. Public Land Survey Monument Record is correct and complete to the best of my knowledge and belief.

Laurence E. Johns III
Laurence E Johns III RLS 2804
Eagle Ridge Surveying, LLC
PO Box 213
Wilton, Wisconsin
5 August 2013



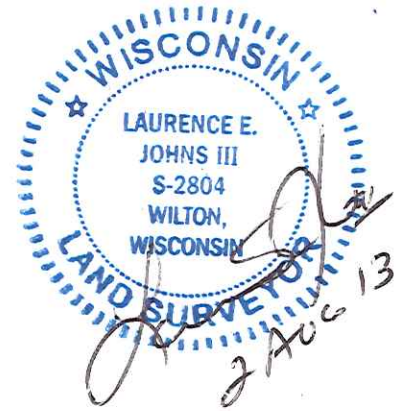
U. S. PUBLIC LAND SURVEY MONUMENT RECORD
'Addendum for Corner Photographs'

SECTION 34, T16N, R3W, TOWN OF WELLS
MONROE COUNTY, WISCONSIN



LOCATION OF LANDMARK

Date:
2 August 2013



Taken from the West



Taken from the South