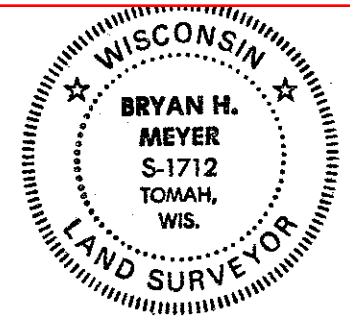


21603340020



H. A. Sime and Associates
P. O. Box 705
Tomah, Wisconsin 54660
Phone: (608)-372-5392

I, Bryan H. Meyer, do hereby certify that on the 24th day of April 1991, I found (evidence) [redacted] of the North 1/4 corner of Section 3, T 15 N, R 3 W Fourth Principal Meridian, and I re-established said corner according to the Wisconsin Statutes as shown and described hereon.

Dated this 23rd day of July 1991.
Bryan H. Meyer
Deputy County Surveyor
Title

History of corner establishment since Original Government Survey

Fred A. Holden was here in December of 1906.

Description of corner evidence found:

I accepted the three-way fence corner as the best available evidence.

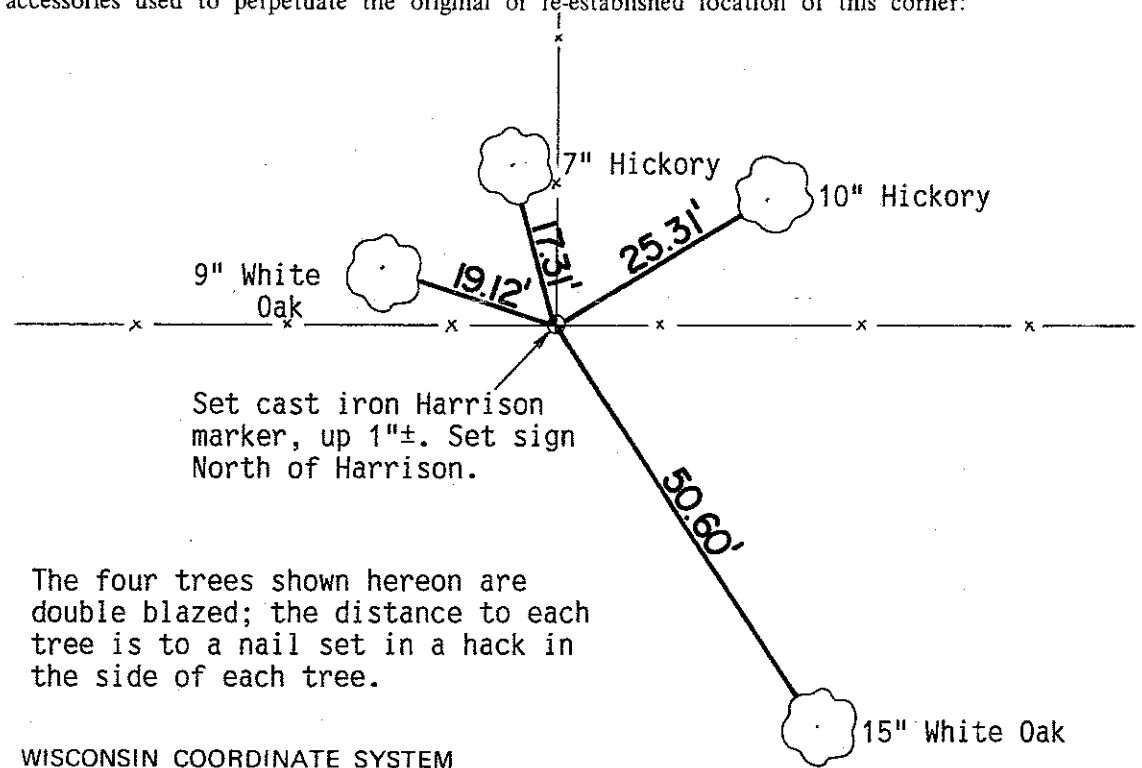
Description of corner and witness monuments, references and accessories used to perpetuate the original or re-established location of this corner:

Crew: Kenworthy, Forsythe
Date: April 23, 1991

Witnesses to corner location:

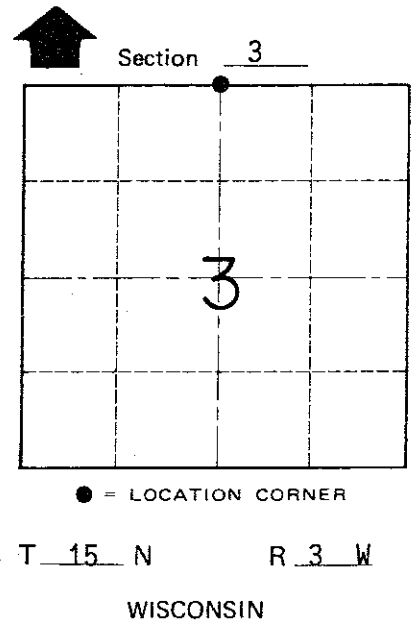
John Kenworthy

Brian Forsythe



Set cast iron Harrison marker, up 1"±. Set sign North of Harrison.

The four trees shown hereon are double blazed; the distance to each tree is to a nail set in a hack in the side of each tree.



COUNTY SURVEYOR FORM NO. 1

SURVEY CONTROL ORDER

Horizontal _____
Vertical _____

WISCONSIN COORDINATE SYSTEM

Corner	East (X)	North (Y)	Elevation (Z)	Zone
Control Sta. Name				

~~City, Village or~~ Town of Jefferson
County of Monroe