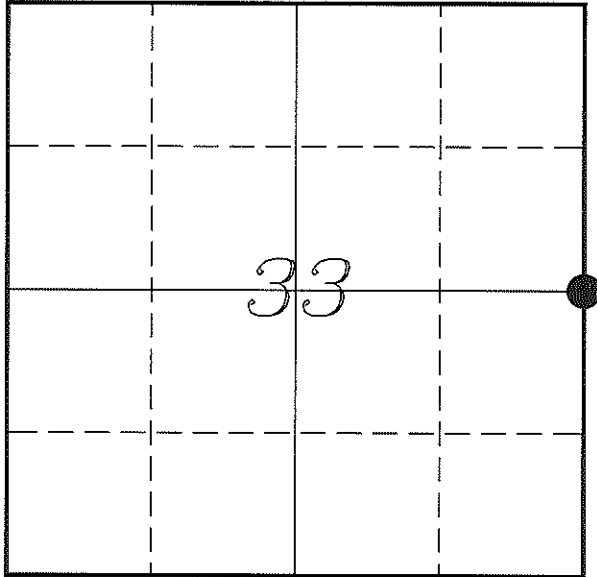

U. S. PUBLIC LAND SURVEY MONUMENT RECORD

SECTION 33, T16N, R3W, TOWN OF WELLS MONROE COUNTY, WISCONSIN



LOCATION OF LANDMARK

Witnesses: Laurence E Johns III

Date: 26 July 2013

<i>MONROE COUNTY COORDINATE SYSTEM</i>	
<i>Northing</i>	334502.083
<i>Easting</i>	647368.701
<i>Datum</i>	NAD 1983 (1991)
<i>Elevation</i>	
<i>Datum</i>	
<i>TYPE OF LANDMARK:</i>	
<i>Set Harrison Monument</i>	
<i>BEARINGS ARE REFERENCED TO:</i>	
<i>Monroe County Coordinates</i>	

Describe any record evidence, monument evidence, testimonial evidence or any other material evidence you considered and whether the monument was found or restored through acceptance of an obliterated evidence location.

No bearing trees of record were located.

I did not find the Holden's stone at this corner. But I did find the one at the '40' Corner to the West of this corner.

There is no occupation anywhere within the vicinity of this location. The land owner is not aware of any stone or other monumentation at this corner.

I re-established this corner by doubling the distance from the previously mentioned stone and the Center of Section and extending the line from the W 1/4 Corner through the stone. This location is 10.7' East and 3.2' South of the mid-point. I felt this was a better location than using the mid-point because it now fit the existing monumentation from Holden's survey.

I accepted this location as the best available evidence of Holden's corner in which he believed represented the best evidence of the original government corner.

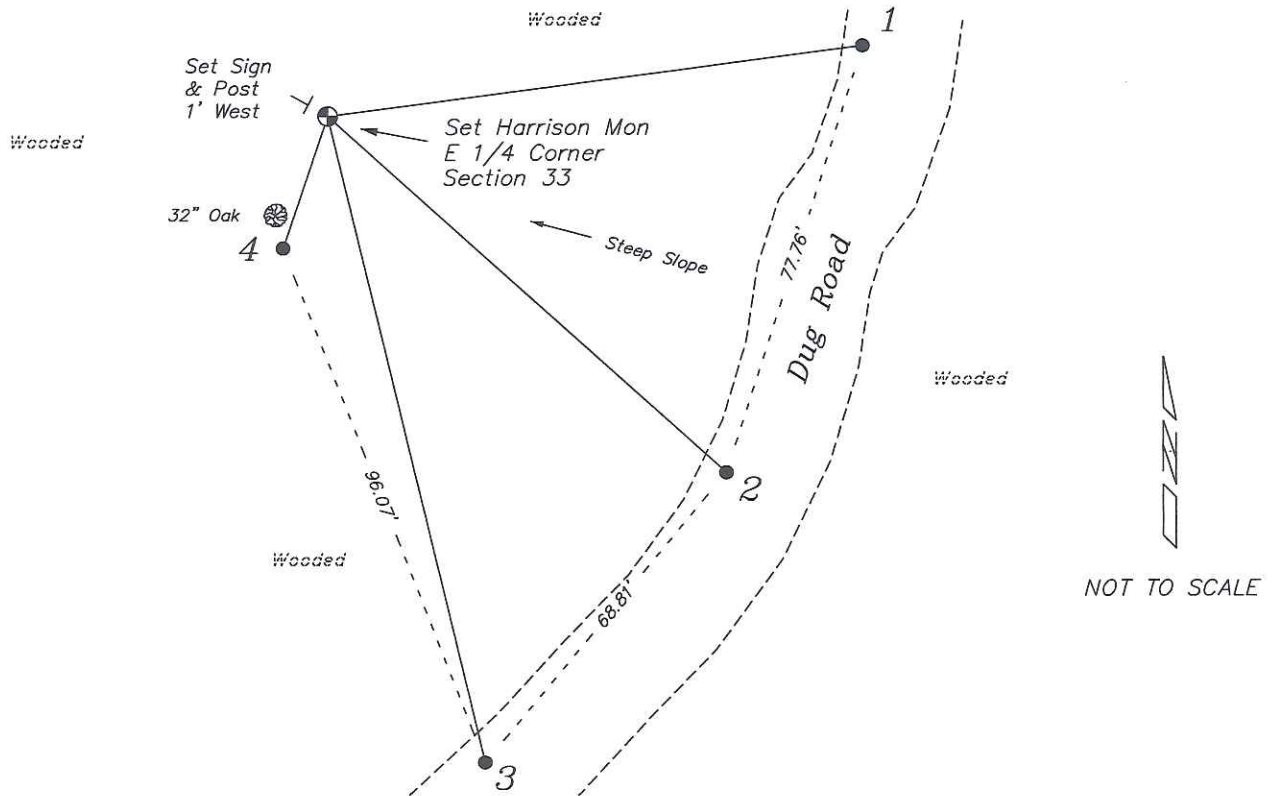
Describe or show any material discrepancy between the location of the restored corner and that of the corner previously restored or re-established.

Henry Maddin established this corner in February 1847.

Fred Holden was at this corner, in October 1911, during a survey in Section 33. He shows that he re-established this corner at the mid-point and set a Stone with a 'X' Mark.

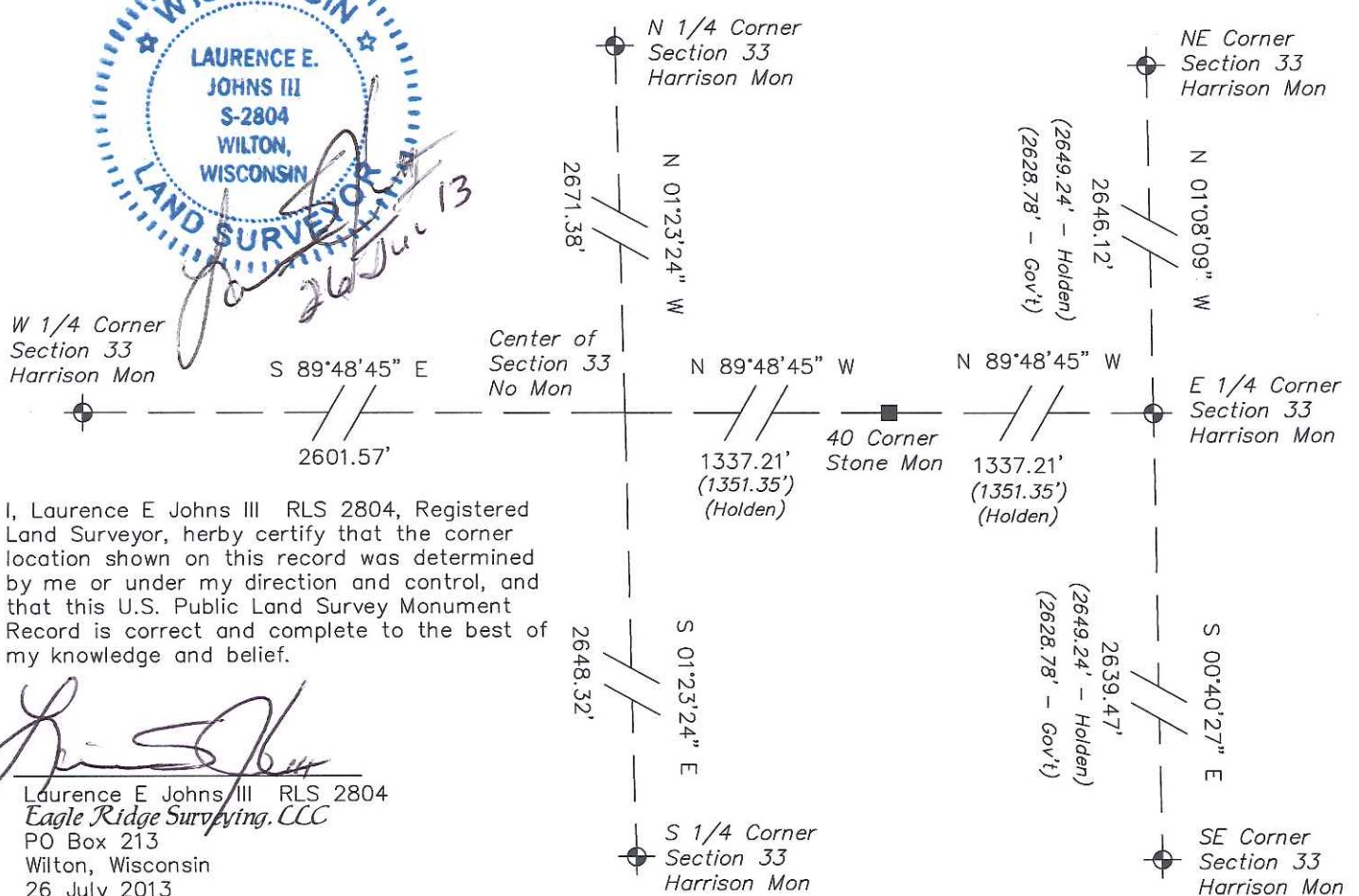
RECORD OF DURABLE WITNESS MONUMENTS

NO	DESCRIPTION	BEARING	DISTANCE
1	Set 3/4" x 18" Iron Rod 2' From West Edge of Dug Road	N 82°38'11" E	93.67'
2	Set 3/4" x 18" Iron Rod 2' From West Edge of Dug Road	S 48°05'09" E	92.85'
3	Set 3/4" x 18" Iron Rod 2' From West Edge of Dug Road	S 13°34'57" E	115.56'
4	Set 3/4" x 18" Iron Rod 3' South of a 32" Oak	S 18°53'47" W	24.15'



PLAN VIEW DRAWING OF REFERENCE TIES

Map Showing Distance And Direction To Other Public Land Survey
Corners Used For Re-Establishing The Corner

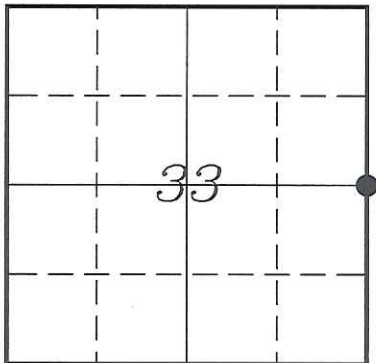


I, Laurence E Johns III RLS 2804, Registered Land Surveyor, hereby certify that the corner location shown on this record was determined by me or under my direction and control, and that this U.S. Public Land Survey Monument Record is correct and complete to the best of my knowledge and belief.

Laurence E. Johns III
 Laurence E Johns III RLS 2804
 Eagle Ridge Surveying, LLC
 PO Box 213
 Wilton, Wisconsin
 26 July 2013

U. S. PUBLIC LAND SURVEY MONUMENT RECORD
'Addendum for Corner Photographs'

SECTION 33, T16N, R3W, TOWN OF WELLS
MONROE COUNTY, WISCONSIN



LOCATION OF LANDMARK

Date:
26 July 2013



Taken from the West, facing uphill



Stone at '40' Corner to the West