

21603330020

I, Garold A. Sime, do hereby certify that on the 17th day of June 1983, I found ~~evidence~~ (no evidence) of the North 1/4 corner of Section 4, T 15 N, R 3 W Fourth Principal Meridian, and I re-established said corner according to the Wisconsin Statutes as shown and described hereon.

Dated this 20th day of Jan. 19 84.

Garold A. Sime

Deputy County Surveyor
Title

History of corner establishment since Original Government Survey

Fred A. Holden was here in October of 1911 and set an iron pipe as shown in an unrecorded survey.

Description of corner evidence found:

Set equidistant and on line between Section corners.
Could not find Holden's Iron Pipe

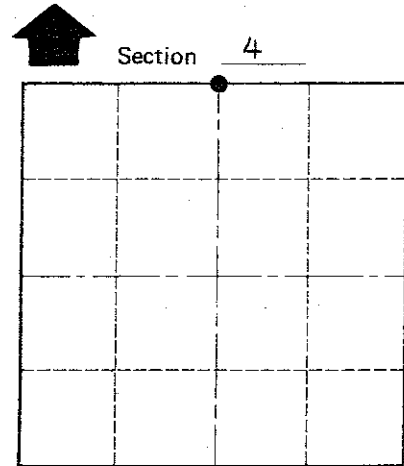
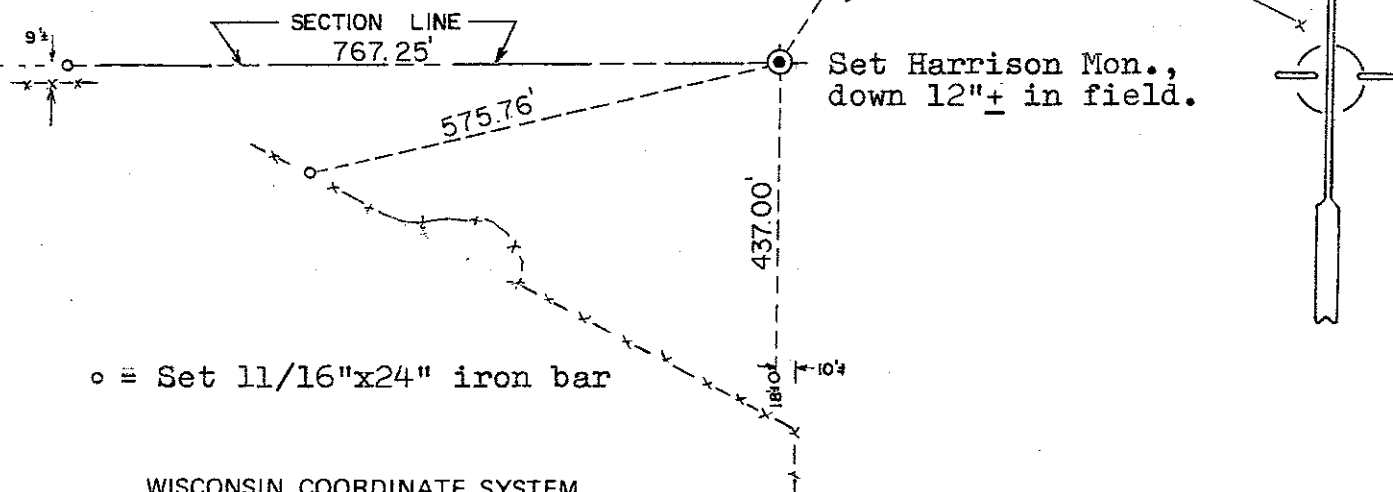
Description of corner and witness monuments, references and accessories used to perpetuate the original or re-established location of this corner:

Witnesses to corner location:

Garold A. Sime

Bryan H. Meyer

**Approved: HARLEY A. SIME
MONROE CO. SURVEYOR**

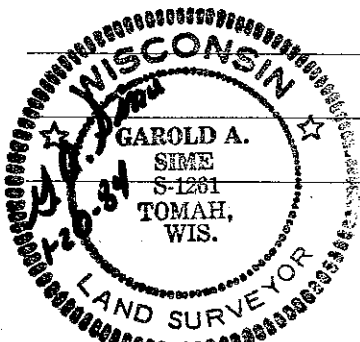


O = LOCATION CORNER

T 15 N R 3 W

WISCONSIN

COUNTY SURVEYOR FORM NO. 1



SURVEY CONTROL ORDER

Horizontal	_____
Vertical	_____

WISCONSIN COORDINATE SYSTEM

Corner	East (X)	North (Y)	Elevation (Z)	Zone
Control Sta. Name				

~~City/Village of~~ Town of Jefferson
County of Monroe