

21603330000

I, Garold A. Sime, do hereby certify that on the 17th day of June 19 83, I found (evidence) ~~was evidence~~ of the Northeast corner of Section 4, T 15 N, R 3 W Fourth Principal Meridian, and I re-established said corner according to the Wisconsin Statutes as shown and described hereon.

History of corner establishment since Original Government Survey

Fred A. Holden was here in October of 1911 and set a stone, as shown in an unrecorded survey.

Description of corner evidence found:

Could not find Holden's stone. Accepted 2-way fence corner as the best available evidence.

Dated this 20th day of Jan. 19 84.

Garold A. Sime

Deputy County Surveyor
Title

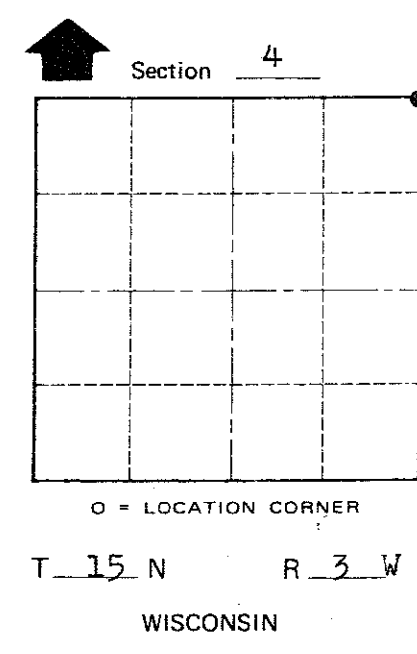
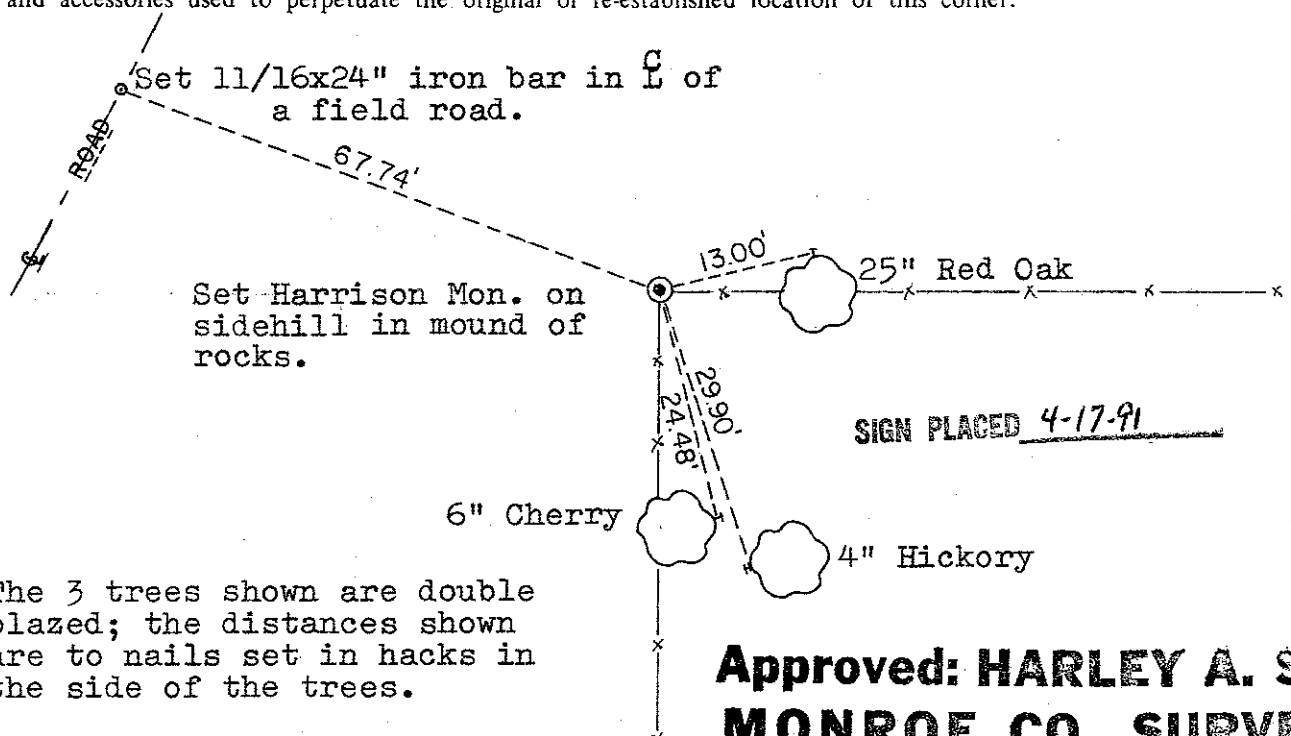
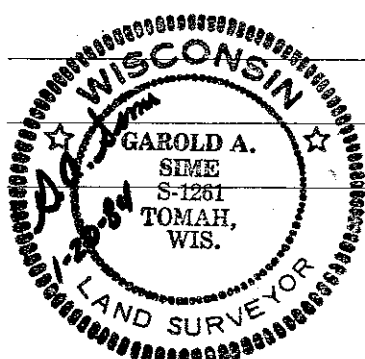
COUNTY SURVEYOR FORM NO. 1

Description of corner and witness monuments, references and accessories used to perpetuate the original or re-established location of this corner:

Witnesses to corner location:

Garold A. Sime

Bryan H. Meyer



The 3 trees shown are double blazed; the distances shown are to nails set in hacks in the side of the trees.

Approved: **HARLEY A. SIME**
MONROE CO. SURVEYOR

SURVEY CONTROL ORDER

Horizontal _____
Vertical _____

WISCONSIN COORDINATE SYSTEM

Corner	East (X)	North (Y)	Elevation (Z)	Zone
Control Sta. Name				

~~City, Village or~~ Town of Jefferson
County of Monroe