

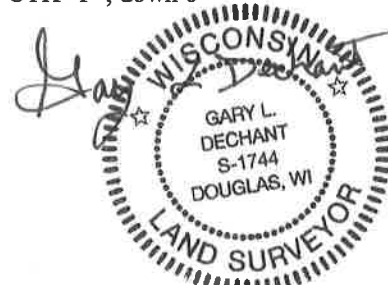
**U.S. PUBLIC LAND CORNER
MAINTENANCE**

130

**Corner ID: S1/4 Sec.32, T16N-R3W
21603320020**

<u>DATE</u>	<u>CREW</u>	<u>MONUMENT INFO</u>
March 24, 2020	Al Hoff Gary L. Dechant	Existing 1/4" iron bar, 19' west of center of CTH "F" 40' south of downed fence to the east of "F"

	<u>Bearing</u>	<u>Distance</u>
1) Reset disturbed 3/4" round iron bar in swampy ground	N89°53'07"W	51.68' (52.23')
2) Reset disturbed 3/4" hexagon iron bar in swampy ground	N89°50'31"W	104.60' (104.95')
3) Reset disturbed 3/4" round iron bar	S89°46'40"E	85.61' (84.75')
4) Set 3/4"x24" round iron bar, down 6", east of CTH "F"	N 58°53'48"E	66.56'
5) Set 3/4"x24" round iron bar east shoulder CTH "F", down 6'	S71°41'19"E	39.89'



March 31, 2020

I, Garold A. Sime, do hereby certify that on the 1st day of May 1984, I found ~~(evidence)~~ (no evidence) of the S 1/4 corner of Section 32, T 16 N, R 3 W Fourth Principal Meridian, and I re-established said corner according to the Wisconsin Statutes as shown and described hereon.

Dated this 28th day of Sept. 1984.

Garold A. Sime

Garold A. Sime, R.L.S. 1261
Title

History of corner establishment since Original Government Survey

Fred Holden was at this corner in Sept. of 1910

Description of corner evidence found:

I set this corner on line between the SE corner and the SW corner of Sec.32, T16N-R3W and on line with the fence line along the East line of the NW1/4 of Sec.5-T15N-R3W,

**See Reverse Side
For Maintenance**

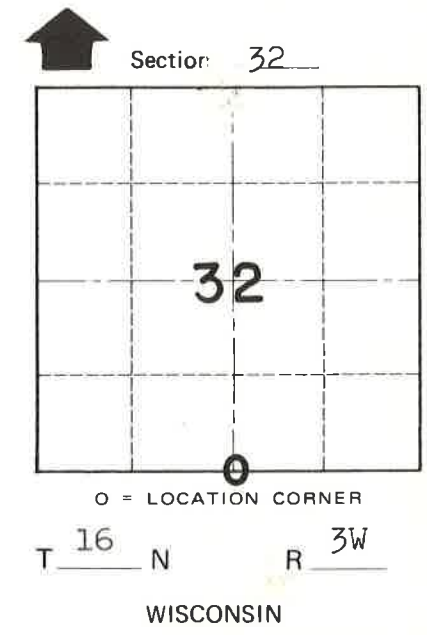
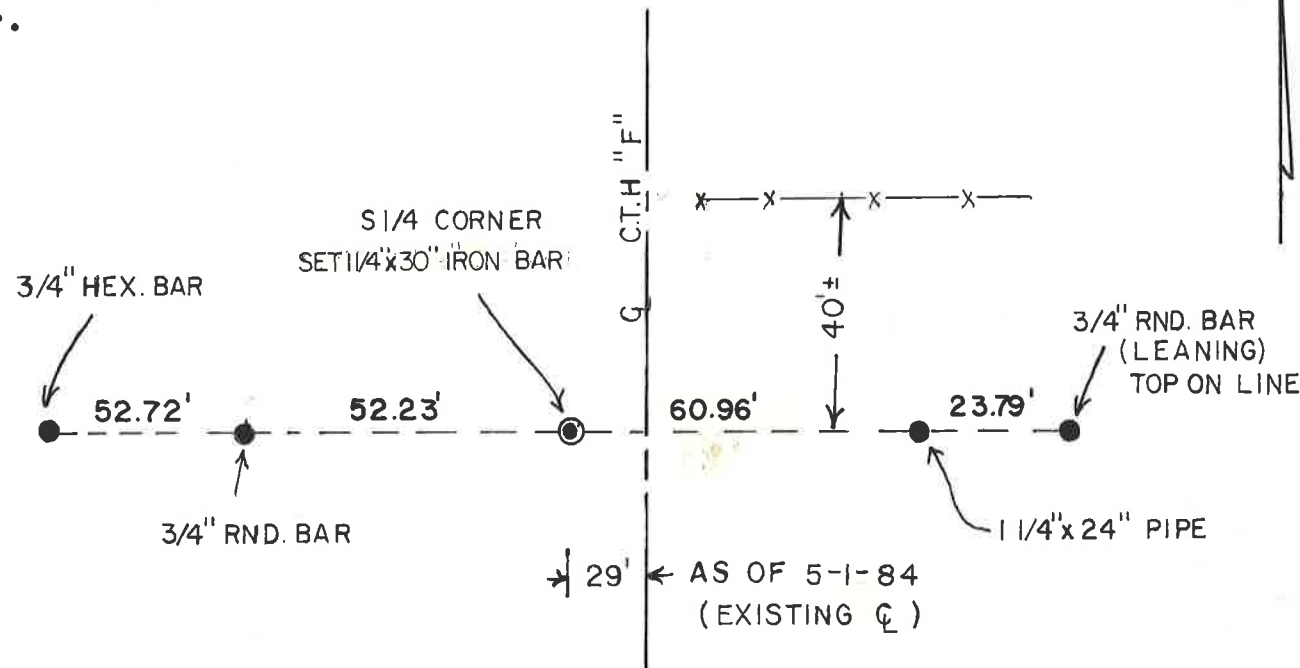
Description of corner and witness monuments, references and accessories used to perpetuate the original or re-established location of this corner:

Set 1 1/4"x 30" Iron Bar at corner.

Witnesses to corner location:

G.A. Sime

Bryan Meyer



SURVEY CONTROL ORDER

Horizontal	_____
Vertical	_____

WISCONSIN COORDINATE SYSTEM

Corner	East (X)	North (Y)	Elevation (Z)	Zone
Control Sta. Name				

City, Village or Town Wells

County of Monroe

COUNTY SURVEYOR FORM NO. 1