

21603320000

I, Garold A. Sime, do hereby certify that on the 17th day of June 1983, I found (evidence) ~~no evidence~~ of the Northwest corner of Section 4, T 15 N, R 3 W Fourth Principal Meridian, and I re-established said corner according to the Wisconsin Statutes as shown and described hereon.

Dated this 20th day of Jan. 1984.

Garold A. Sime

Deputy County Surveyor
Title

History of corner establishment since Original Government Survey

Fred A. Holden was here in October of 1911 and set a stake in a stone pile, as called for in an unrecorded survey. Doug Malliet was here in October of 1976 and set an iron pipe in a stone pile. Fred Holden was also here in Sept. of 1910
Description of corner evidence found:

Found Malliet's iron pipe in pile of stones and accepted it as the corner.

Description of corner and witness monuments, references and accessories used to perpetuate the original or re-established location of this corner:

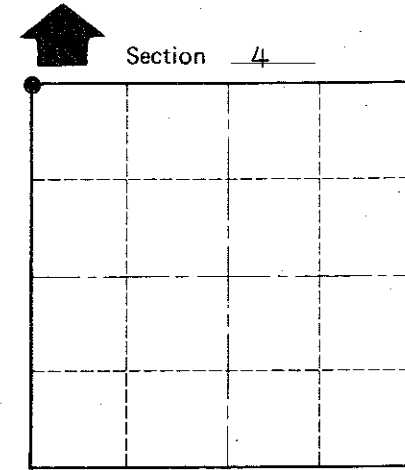
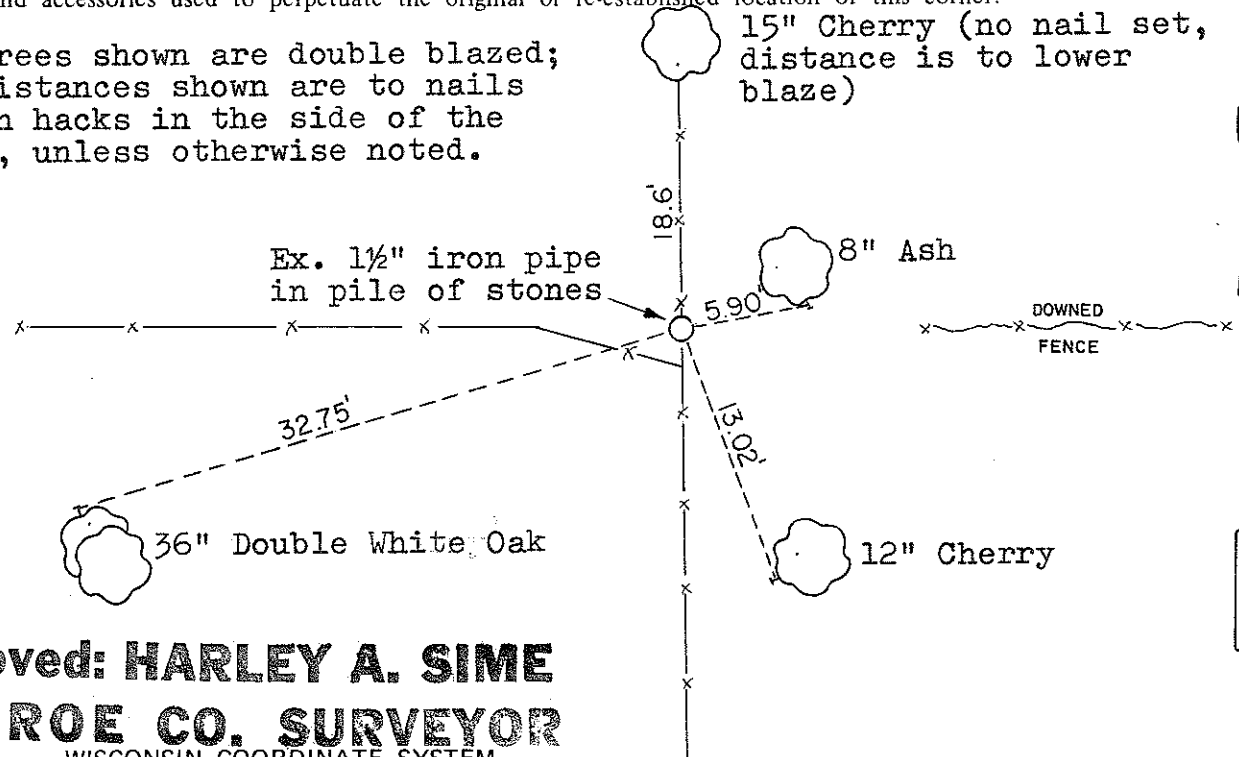
The trees shown are double blazed; the distances shown are to nails set in hacks in the side of the trees, unless otherwise noted.

15" Cherry (no nail set, distance is to lower blaze)

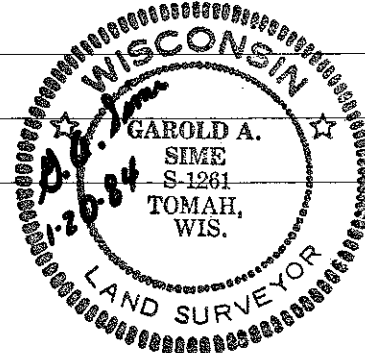
Witnesses to corner location:

Garold A. Sime

Bryan H. Meyer



O = LOCATION CORNER
T 15 N R 3 W
WISCONSIN



Approved: **HARLEY A. SIME**
MONROE CO. SURVEYOR
WISCONSIN COORDINATE SYSTEM

SURVEY CONTROL ORDER

Horizontal				
Vertical				
Corner	East (X)	North (Y)	Elevation (Z)	Zone
Control Sta. Name				

~~City, Village or~~ Town of Jefferson
County of Monroe

COUNTY SURVEYOR FORM NO. 1