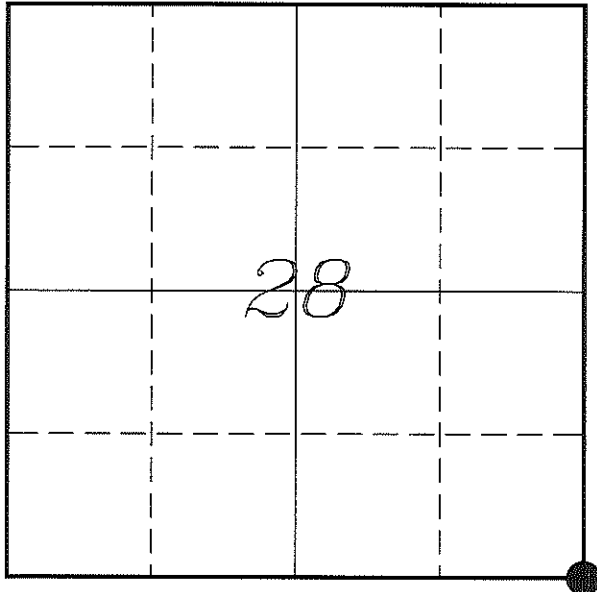


---

 U. S. PUBLIC LAND SURVEY MONUMENT RECORD
 

---

 SECTION 28, T16N, R3W, TOWN OF WELLS  
 MONROE COUNTY, WISCONSIN


LOCATION OF LANDMARK

Witnesses: Laurence E Johns III  
 Al Hoff

Date: 24 July 2013

MONROE COUNTY COORDINATE SYSTEM	
Northing	337147.685
Easting	647316.250
Datum	NAD 1983 (1991)
Elevation	
Datum	
TYPE OF LANDMARK:	
Set Harrison Monument	
BEARINGS ARE REFERENCED TO:	
Monroe County Coordinates	

---

Describe any record evidence, monument evidence, testimonial evidence or any other material evidence you considered and whether the monument was found or restored through acceptance of an obliterated evidence location.

No bearing trees of record were located.

I did find Holden's stone but it has been disturbed, There is a newer fence post at the corner. It appears that the stone was moved during the installation of the fence post.

The stone is lying on its side about 15' to the Northwest of the fence corner.

Government notes call for a Ledge of Sand Rock at a distance of 1 chain East of this corner. I measured the top edge of the ledge at approximately 73'. Erosion of the ledge could account for this difference.

This fence corner is within 6" of Holden's distance for the half-mile to the West, within 15' of the Government notes for the half-mile to the North, within 2' of the Government notes for the mile to the East and within 14' of Holden's distance for the mile to the South.

I believe the current fence corner is within a few feet of where Holden's stone was located.

I placed a Harrison monument in what I believed to be the location of Holden's stone and since Holden set this stone at the location of the government corner. I accepted this location as the best available evidence of the original government corner.

---

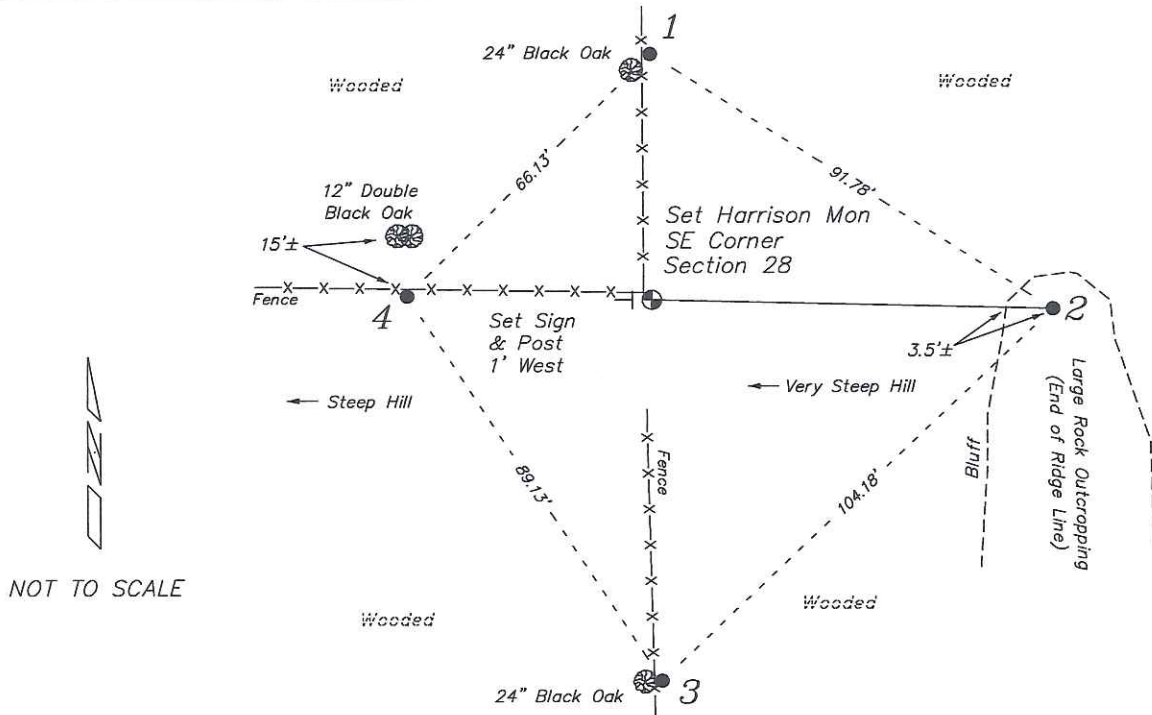
Describe or show any material discrepancy between the location of the restored corner and that of the corner previously restored or re-established.

Henry Maddin established this corner in February 1847.

Fred Holden was at this corner, in October 1911, during a survey in Section 33. He shows that he found a stump of an original bearing tree and set a Stone with 'X' Mark at this corner.

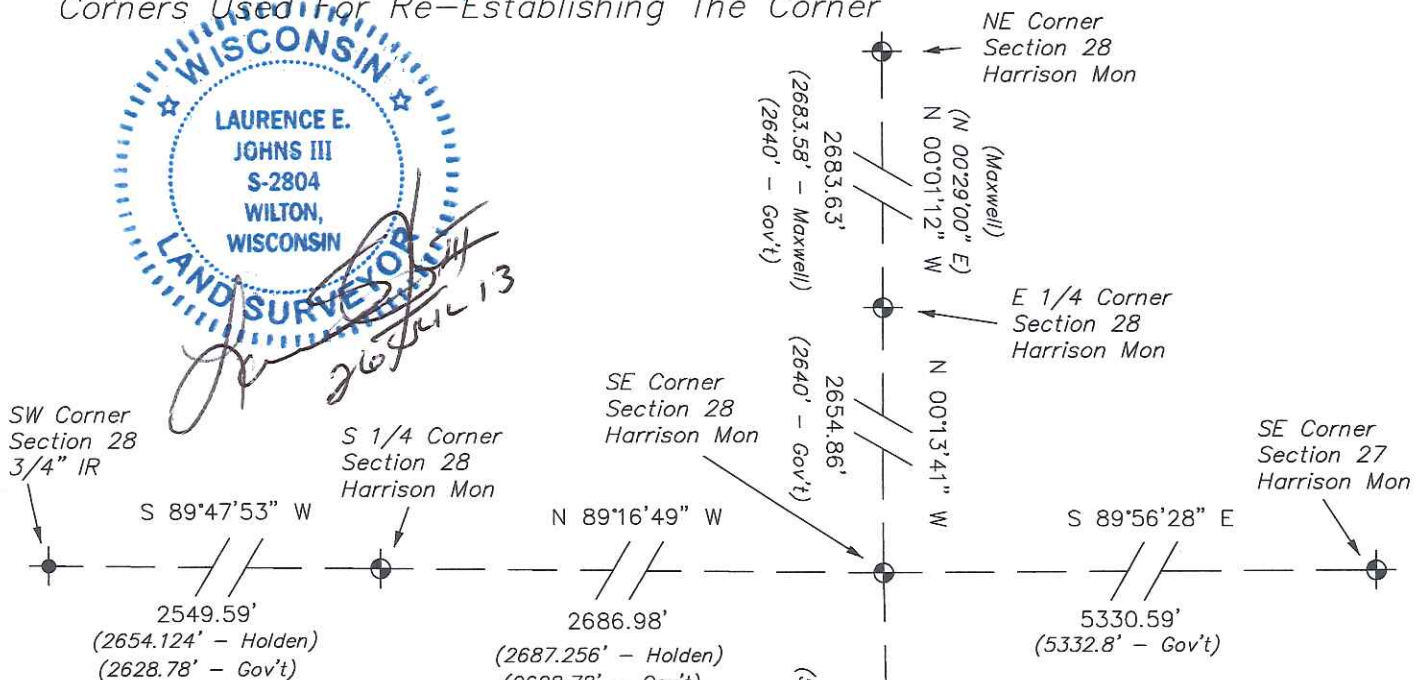
# RECORD OF DURABLE WITNESS MONUMENTS

NO	DESCRIPTION	BEARING	DISTANCE
1	Set 3/4" x 18" Iron Rod In Fence - 3' North of 24" Black Oak	N 00°15'37" W	47.24'
2	Set 3/4" x 18" Iron Rod In Fence Line	S 88°40'09" E	77.39'
3	Set 3/4" x 18" Iron Rod In Fence - East Side of a 24" Black Oak	S 01°29'03" E	73.65'
4	Set 3/4" x 18" Iron Rod In Fence - 15' South of 12" Dbl Black Oak	N 89°06'13" W	47.24'



## PLAN VIEW DRAWING OF REFERENCE TIES

Map Showing Distance And Direction To Other Public Land Survey Corners Used For Re-Establishing The Corner



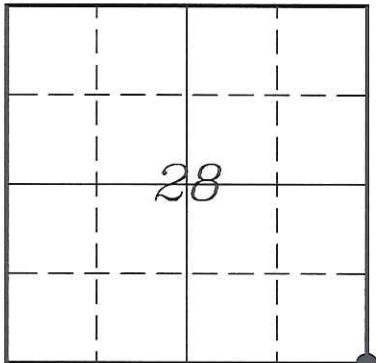
I, Laurence E Johns III RLS 2804, Registered Land Surveyor, hereby certify that the corner location shown on this record was determined by me or under my direction and control, and that this U.S. Public Land Survey Monument Record is correct and complete to the best of my knowledge and belief.

*Laurence E. Johns III*  
 Laurence E Johns III RLS 2804  
 Eagle Ridge Surveying, LLC  
 PO Box 213  
 Wilton, Wisconsin  
 26 July 2013



U. S. PUBLIC LAND SURVEY MONUMENT RECORD  
'Addendum for Corner Photographs'

SECTION 28, T16N, R3W, TOWN OF WELLS  
MONROE COUNTY, WISCONSIN



LOCATION OF LANDMARK

Date:  
24 July 2013



Taken from Southeast, Disturbed Corner Stone in Background



Disturbed Holden Corner Stone