

21603250020

I, Garold A. Sime, do hereby certify that on the 11th day of April 1991, I found (evidence) (~~no evidence~~) of the N $\frac{1}{4}$ corner of Section 36, T 16 N, R 3 W Fourth Principal Meridian, and I re-established said corner according to the Wisconsin Statutes as shown and described hereon.

Dated this 23rd day of May 1991.

Garold A. Sime

Monroe County Surveyor
Title

History of corner establishment since Original Government Survey

No recorded history regarding this corner since the Original Government Survey.

Description of corner evidence found:

I accepted the existing fence corner as the best available evidence for the corner location.

Description of corner and witness monuments, references and accessories used to perpetuate the original or re-established location of this corner:

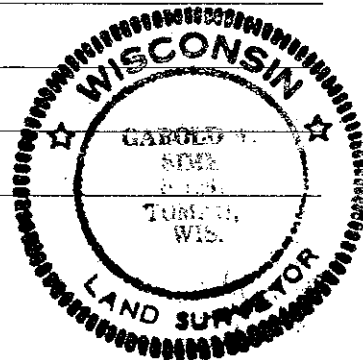
Set cast iron Harrison Monument at corner location.
Set guard sign on west side of monument

Witnesses to corner location:

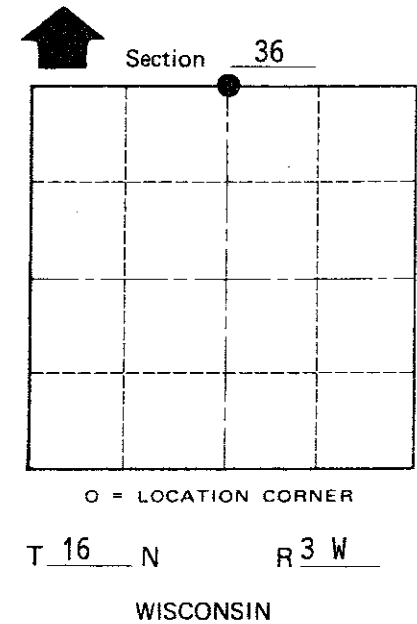
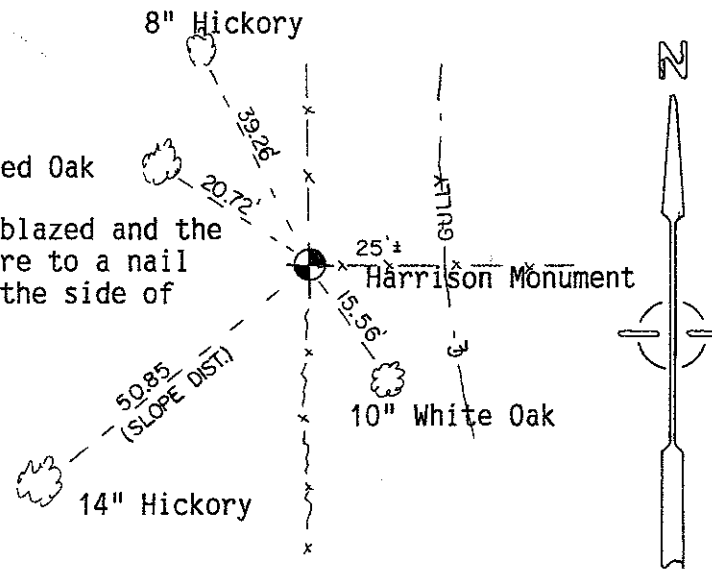
Garold A. Sime, R.L.S.

John Kenworthy

Brian Forsythe



Trees are double blazed and the distances shown are to a nail set in a hack in the side of the tree.



COUNTY SURVEYOR FORM NO. 1

SURVEY CONTROL ORDER

Horizontal	_____
Vertical	_____

WISCONSIN COORDINATE SYSTEM

Corner	East (X)	North (Y)	Elevation (Z)	Zone
Control Sta. Name				

~~City, Village~~ or Town of Wells
County of Monroe