

21603240000

I, Bryan H. Meyer, do hereby certify that on the 13th day of December 1983, I found (evidence) ~~of the~~ of the Southwest corner of Section 19, T 16 N, R 2 W Fourth Principal Meridian, and I re-established said corner according to the Wisconsin Statutes as shown and described hereon.

History of corner establishment since Original Government Survey

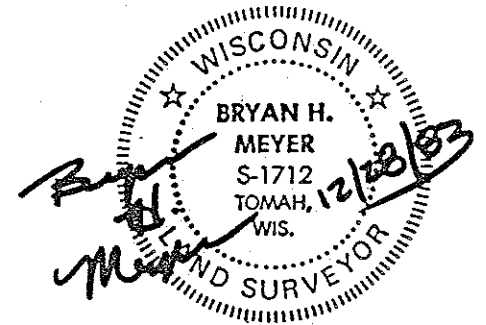
Kenyon was here in April of 1883.

Description of corner evidence found:

Accepted 3-way fence corner as the best available evidence.

Dated this 28th day of Dec. 1983.

Bryan H. Meyer
Deputy County Surveyor
Title



COUNTY SURVEYOR FORM NO. 1

Description of corner and witness monuments, references and accessories used to perpetuate the original or re-established location of this corner:

Crew: Meyer, Perrigo
Date: December 13, 1983 - 1:30
Weather: Misting, 25°±.
Witnesses to corner location:

Bryan H. Meyer

Dennis Perrigo

Distances shown are to a nail set in a hack in the side of the tree. All trees are double blazed except for the apple cluster.

Set Guard sign on south side of Harrison Monument.

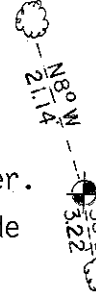
Crew: Bryan H. Meyer, R.L.S.

John Kenworthy

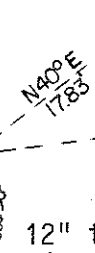
Brian Forsythe

Date: May 4th, 1989

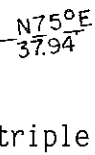
6" Hickory



6" Hickory

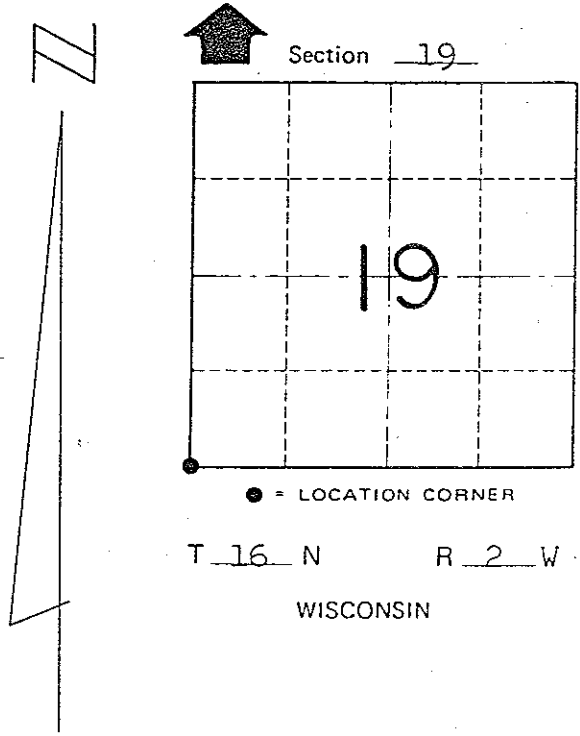


5" Cherry



12" triple apple cluster (not blazed)

Note: The bearings shown are hand compass bearings.



SURVEY CONTROL ORDER

Horizontal
Vertical

WISCONSIN COORDINATE SYSTEM

Corner	East (X)	North (Y)	Elevation (Z)	Zone
Control Sta. Name				

~~City or Village or Town~~ of Ridgeville

County of Monroe

I, Bryan H. Meyer, do hereby certify that on the 13th day of December 1983, I found (evidence) ~~(no evidence)~~ of the Southwest corner of Section 19, T 16 N, R 2 W Fourth Principal Meridian, and I re-established said corner according to the Wisconsin Statutes as shown and described hereon.

History of corner establishment since Original Government Survey

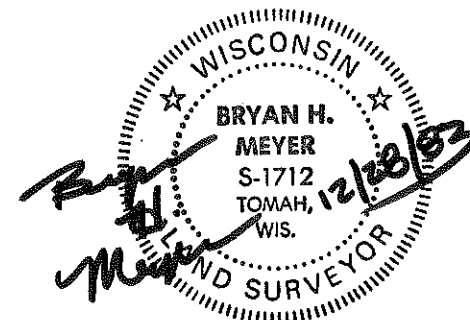
Kenyon was here in April of 1883.

Description of corner evidence found:

Accepted 3-way fence corner as the best available evidence.

Dated this 28th day of Dec. 1983.

Bryan H. Meyer
Deputy County Surveyor
Title



COUNTY SURVEYOR FORM NO. 1

Description of corner and witness monuments, references and accessories used to perpetuate the original or re-established location of this corner:

Crew: Meyer, Perrigo
Date: December 13, 1983 - 1:30 P.M.
Weather: Misting, 25°±.
Witnesses to corner location:

Bryan H. Meyer
Dennis Perrigo

APPROVED: Harley A. Sime
Monroe County Surveyor

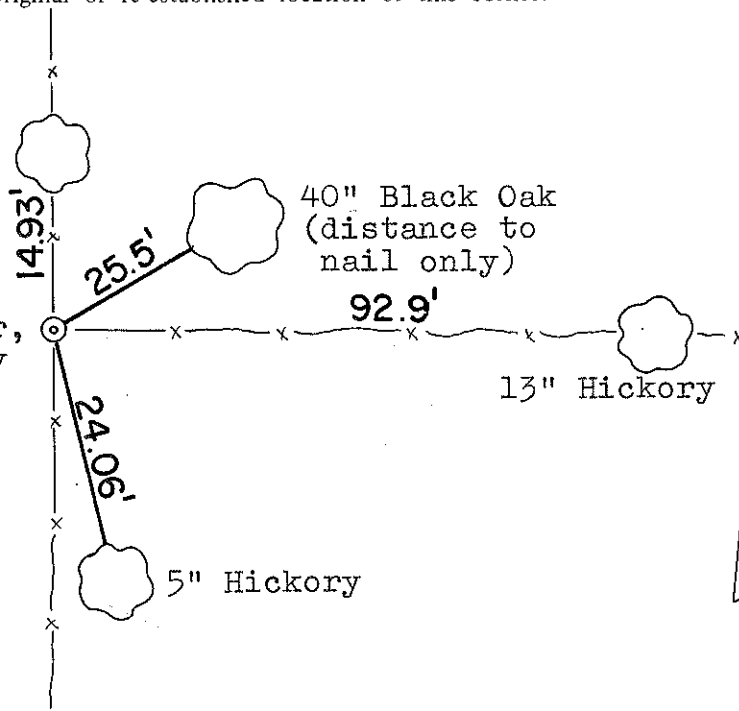
SURVEY CONTROL ORDER

Horizontal	_____
Vertical	_____

The three Hickory bearing trees are double blazed; distances are to nails in hacks in the sides of the trees.
WISCONSIN COORDINATE SYSTEM

Corner	East (X)	North (Y)	Elevation (Z)	Zone
Control Sta. Name				

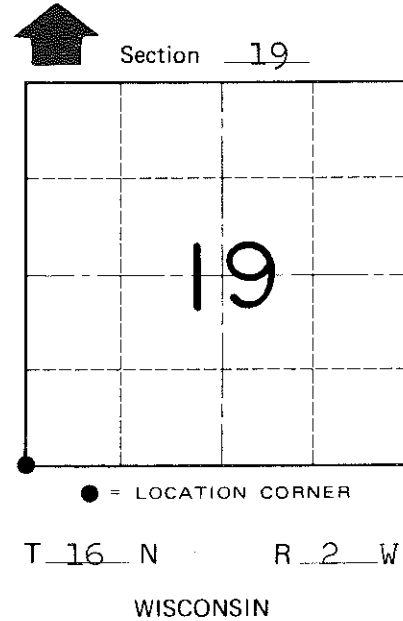
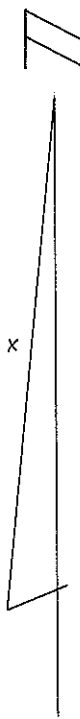
13" Hickory



40" Black Oak
(distance to nail only)

13" Hickory

5" Hickory



~~City, Village or~~ Town of Ridgeville
County of Monroe