

CERTIFIED LAND CORNER

NO. 85

I, LAWRENCE A. FEDDERSEN, do hereby certify that on the Eighth day of December 1997, I found no evidence of the NW corner of Section 26, T16N-R3W, Fourth Principal Meridian, and I re-established said corner according to the Wisconsin Statutes as shown and described hereon.

History of corner establishment since Original Government Survey
 There is no evidence of this corner being re-established since the original survey.

Dated this 8th day of December, 1997.
Lawrence A. Feddersen

REGISTERED LAND SURVEYOR
 TITLE

Description of corner evidence found:
 Reset corner using intersection of existing fences and extensions thereof. Distance to existing West Quarter corner measures 2804.46'.

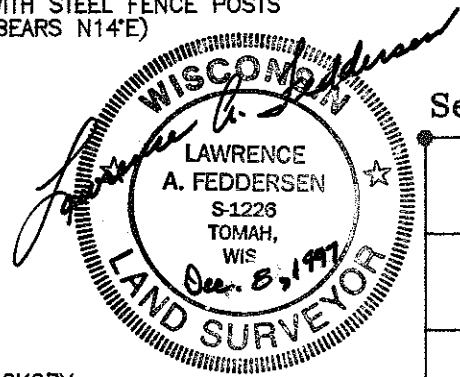
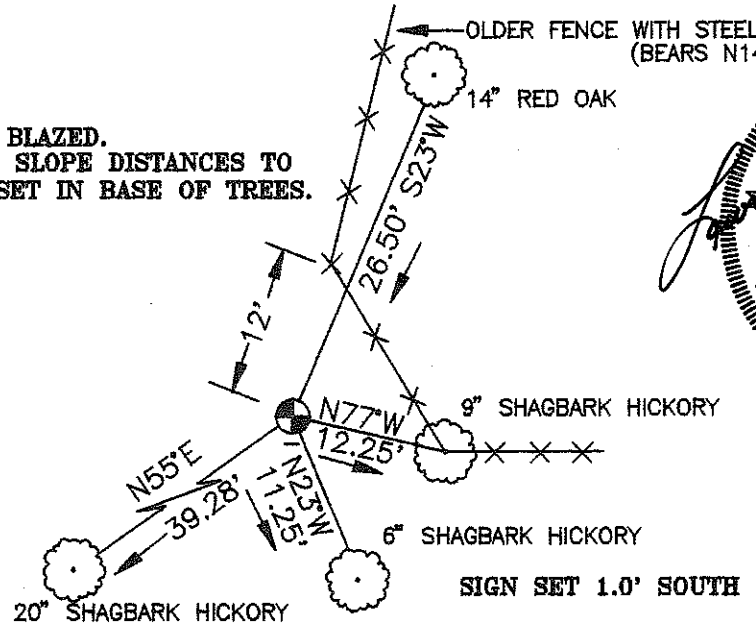


Description of corner and witness monuments, references and accessories used to perpetuate the original or re-established location of this corner:

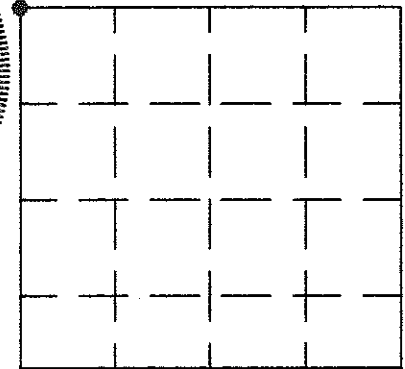
Witnesses to corner location:
LAWRENCE A. FEDDERSEN
KELLY D. CALLAWAY

ALL TREES ARE DOUBLE BLAZED.
 ALL MEASUREMENTS ARE SLOPE DISTANCES TO THE NAILS & WASHERS SET IN BASE OF TREES.

⊙ = SET TRUE CAST PRODUCT (TCP) MONUMENT



Section 26, T16N, R3W



⊙ = LOCATION OF CORNER

SURVEY CONTROL ORDER

HORIZONTAL				
VERTICAL				
CORNER	EAST (X)	NORTH (Y)	ELEVATION (Z)	ZONE
CONTROL STA. NAME				

TOWN OF WELLS,
 MONROE COUNTY, WI