

CERTIFICATE

CERTIFIED LAND CORNER

No. 69

**21603170000**

I, Ronald D. Parish, do hereby certify that on the 28th day of August 19 87, I found ~~(evidence)~~ (no evidence) of the SW corner of Section 16, T 16 N, R 3 W. Fourth Principal Meridian, and I re-established said corner according to the Wisconsin Statutes as shown and described hereon.

History of corner establishment since Original Government Survey

No known history since the Original Government Survey

Description of corner evidence found:

Set corner at intersection of three fence line, down and in poor condition. This makes the mile to the South, ± 5274 feet and the mile North, ± 5272 feet, and the mile to the East compares favorably with the recorded distance.

Dated this 18th day of Sept. 19 87.

Ronald D. Parish  
Registered Land Surveyor  
Title

COUNTY SURVEYOR FORM NO. 1

Description of corner and witness monuments, references and accessories used to perpetuate the original or re-established location of this corner:

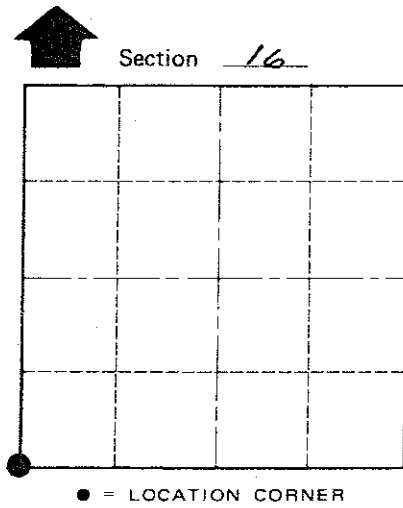
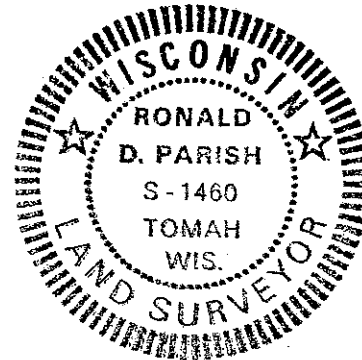
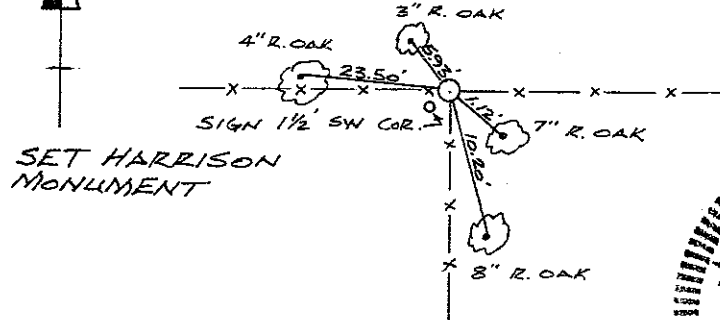
Witnesses to corner location:

Ronald D. Parish

Robert Sherwood



All trees double blazed with nail and tab in one blaze.



T 16 N R 3 W  
WISCONSIN

SURVEY CONTROL ORDER

Horizontal	_____
Vertical	_____

WISCONSIN COORDINATE SYSTEM

Corner	East (X)	North (Y)	Elevation (Z)	Zone
Control Sta. Name				

City, Village or Town Wells

County of Monroe