

CERTIFICATE

CERTIFIED LAND CORNER

No. 58

21603152000

I, Gary L. Dechant, do hereby certify that on the 21st day of March 19 98, I found (evidence) (no evidence) of the EA corner of Section 15, T 16 N, R 3 W Fourth Principal Meridian, and I re-established said corner according to the Wisconsin Statutes as shown and described hereon.

History of corner establishment since Original Government Survey

No known recorded history since the original government survey.

Description of corner evidence found:

Set by single proportionate measurement. Fits Projected fence corner almost perfect.

Dated this 26th day of March 19 98.

Gary L. Dechant

Registered Land Surveyor-1744

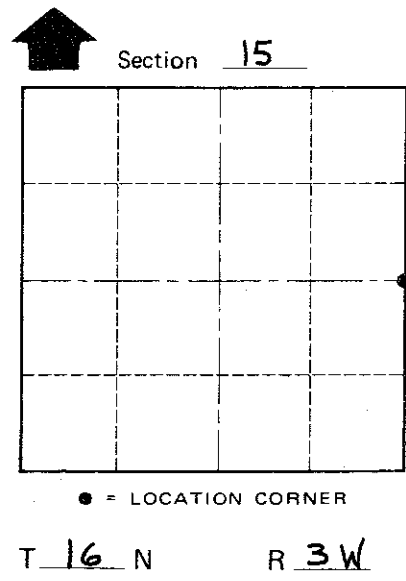
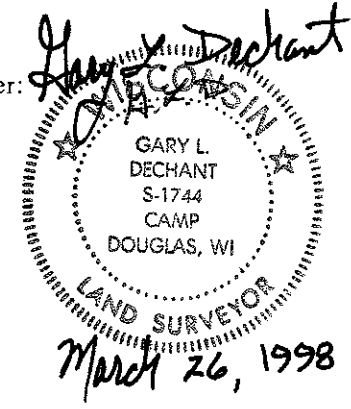
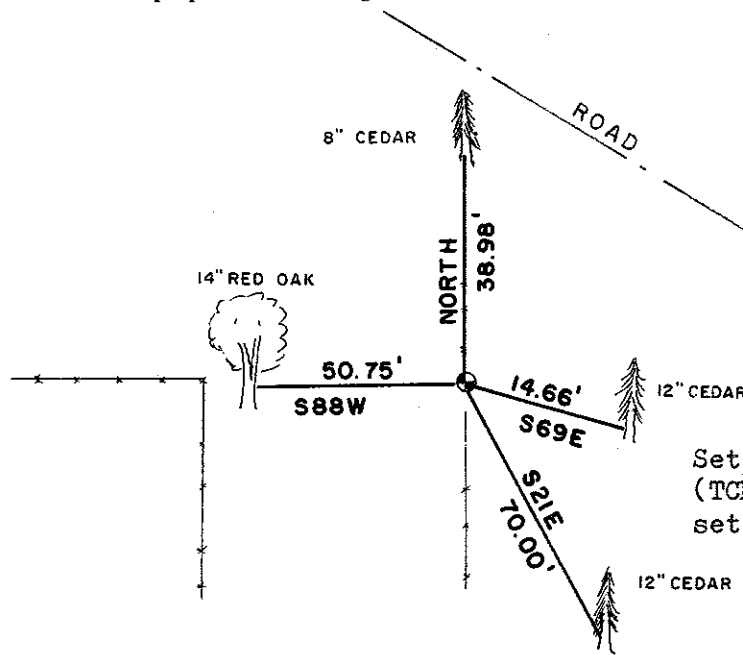
COUNTY SURVEYOR FORM NO. 1

Description of corner and witness monuments, references and accessories used to perpetuate the original or re-established location of this corner:

Witnesses to corner location:

David E. Madison

Gary L. Dechant



Set Cast Iron County Monument (TCP), falls 110' south of road, set survey sign 1' west

• = LOCATION CORNER

T 16 N R 3 W

WISCONSIN (Trees double blazed with 40d nail set)

SURVEY CONTROL ORDER

Table with 2 rows: Horizontal, Vertical

WISCONSIN COORDINATE SYSTEM

Table with 5 columns: Corner, East (X), North (Y), Elevation (Z), Zone

City, Village or Town WELLS

County of MONROE