

21603140000

I, William C. Jung, do hereby certify that on the 3rd day of February 1982, I found (evidence) (no evidence) of the Northwest corner of Section 24, T16 N, R3 W Fourth Principal Meridian, and I re-established said corner according to the Wisconsin Statutes as shown and described hereon.

Dated this 8th day of Feb. 1982.

William C. Jung

Registered Land Surveyor 1323

History of corner establishment since Original Government Survey Fred Holden found the original corner here in November of 1899 and April of 1900. He found an original bearing tree. Setting the corner: This corner was set so as to best fit the existing occupied field conditions found. First, I accepted the old East-West fence for East-West direction. It fits evidence found at the Northeast and North 1/4 corners of Section 24. The old East-West fence at the N1/16NW corner is only 4.5' off line. Next, old paperwork of Fred Holden's from 1902 and now in my possession, shows that he performed a survey in the NW1/4 of Section 24 and that he set the C1/16NW corner. He calls for a telephone pole being N70°E, 38.5' from the corner. I found what I believe to be Holden's old telephone pole at the C1/16NW corner. Therefore, secondly, using this point, I computed a distance back to the final CN1/16 corner. Then I projected this same distance West from the C1/16NW and force-closed a bearing to the final West 1/4 corner. I then intersected this bearing along the West line of the SW4-NW4 with the existing East-West fence at the Northwest corner of Section 24. The road centerline running North-South between the N1/16NW and CW1/16 corners is supposed to be on the "forty line" and with my final data for the NW4, the "forty line" fits the existing road centerline very well. When the computations are done, Holden's corner at the C1/16NW corner fits very well. From my final corner, the distance East to the North 1/4 corner of Section 24 is about 5' short of the original notes. I measured West to an ancient fence corner at the N1/16NE corner of Section 23 and found this distance to be about 2' short of the original notes. I also measured 1/2 mile North to the East 1/4 corner of Section 14 and found the distance to fit the original notes very well. It is interesting to note that the final North line of the NW1/4 is for all practical purposes parallel to the South line of the NW1/4, and that the East and West lines of said NW1/4 are almost parallel. I find this to be more than just a coincidence. Note: The snow was about 3' deep and temperatures were below zero during the course of this survey, so exploration was very difficult along the fence lines.

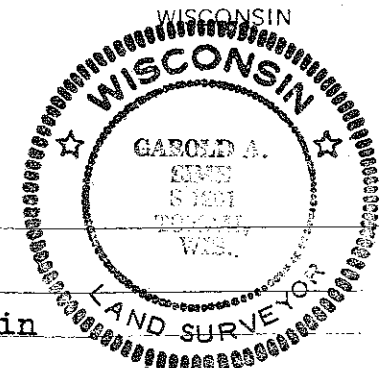
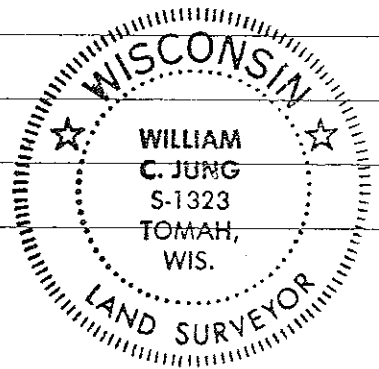
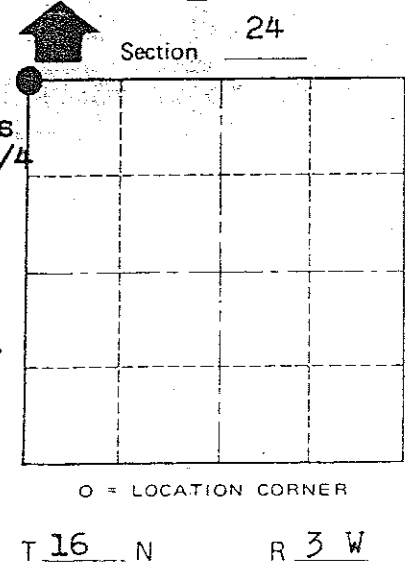
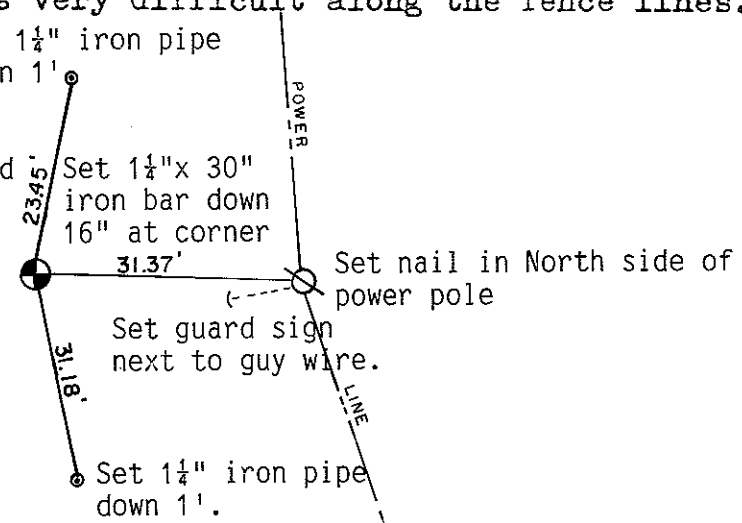
Witnesses to corner location: Jung, Dechant, Meyer

Re-set corner April 24th, 1991 Set 1 1/2" iron pipe down 1' Crew: Garold A. Sime, R.L.S. John Kenworthy Brian Forsythe

Note: This corner was re-established from recorded information as per Vol.5 C.S.M., Page 100 and at Mr. Jung's distance from the W1/4 corner of Sec.24.

Garold A. Sime Monroe County Surveyor

\*Mr. Jung's Iron Bar had been plowed out.



COUNTY SURVEYOR FORM NO. 1

Table with columns: Horizontal, Vertical, Corner, Control Sta. Name

Table with columns: East (X), North (Y), Elevation (Z), Zone

City, Village or Town Wells County of Monroe Wisconsin

I, William C. Jung, do hereby certify that on the 3rd day of February 1982, I found (evidence) ~~(no evidence)~~ of the Northwest corner of Section 24, T16 N, R 3 W Fourth Principal Meridian, and I re-established said corner according to the Wisconsin Statutes as shown and described hereon.

Dated this 8th day of Feb. 1982.

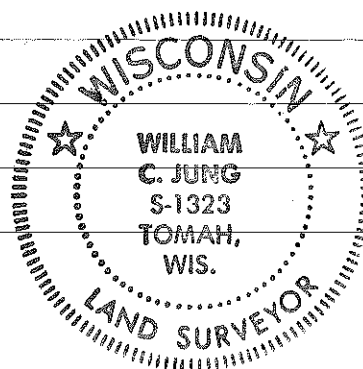
William C. Jung  
Registered Land Surveyor 1323  
Title

History of corner establishment since Original Government Survey  
Fred Holden found the original corner here in November of 1899 and April of 1900. He found an original bearing tree.  
**Setting the corner:** This corner was set so as to best fit the existing occupied field conditions found. First, I accepted the old East-West fence for East-West direction. It fits evidence found at the Northeast and North 1/4 corners of Section 24. The old East-West fence at the N1/16NW corner is only 4.5'+ off line. Next, old paperwork of Fred Holden's from 1902 and now in my possession, shows that he performed a survey in the NW1/4 of Section 24 and that he set the C1/16NW corner. He calls for a telephone pole being N70°E, 38.5' from the corner. I found what I believe to be Holden's old telephone pole at the C1/16NW corner. Therefore, secondly, using this point, I computed a distance back to the final C1/16 corner. Then I projected this same distance West from the C1/16NW and force-closed a bearing to the final West 1/4 corner. I then intersected this bearing along the West line of the SW1/4-NW1/4 with the existing East-West fence at the Northwest corner of Section 24. The road centerline running North-South between the N1/16NW and CW1/16 corners is supposed to be on the "forty line" and with my final data for the NW1/4, the "forty line" fits the existing road centerline very well. When the computations are done, Holden's corner at the C1/16NW corner fits very well. From my final corner, the distance East to the North 1/4 corner of Section 24 is about 5'+ short of the original notes. I measured West to an ancient fence corner at the N1/16NE corner of Section 23 and found this distance to be about 2'+ short of the original notes. I also measured 1/2 mile North to the East 1/4 corner of Section 14 and found the distance to fit the original notes very well. It is interesting to note that the final North line of the NW1/4 is for all practical purposes parallel to the South line of the NW1/4, and that the East and West lines of said NW1/4 are almost parallel. I find this to be more than just a coincidence. Note: The snow was about 3' deep and temperatures were below zero during the course of this survey, so exploration was very difficult along the fence lines.

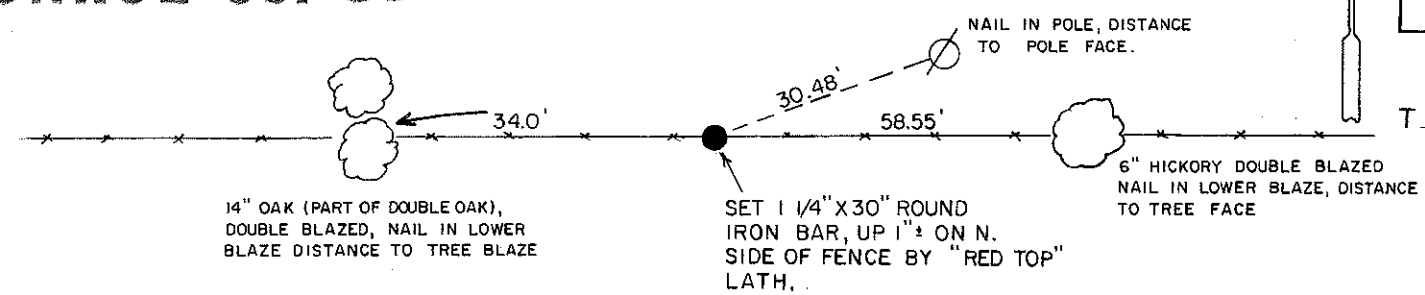
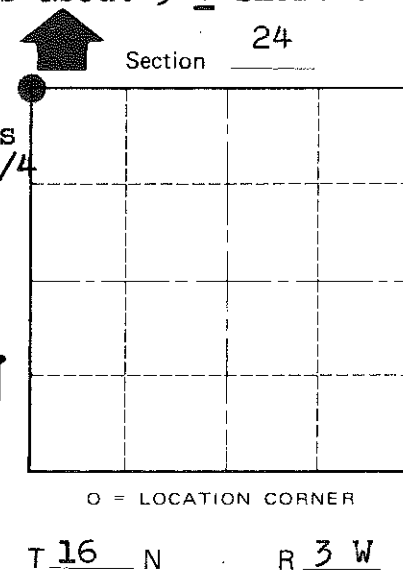
Description of corner and witness monuments, references and accessories used to perpetuate the original or re-established location of this corner:  
the original notes. I measured West to an ancient fence corner at the N1/16NE corner of Section 23 and found this distance to be about 2'+ short of the original notes. I also measured 1/2 mile North to the East 1/4 corner of Section 14 and found the distance to fit the original notes very well. It is interesting to note that the final North line of the NW1/4 is for all practical purposes parallel to the South line of the NW1/4, and that the East and West lines of said NW1/4 are almost parallel. I find this to be more than just a coincidence. Note: The snow was about 3' deep and temperatures were below zero during the course of this survey, so exploration was very difficult along the fence lines.

Witnesses to corner location:

Jung  
Dechant  
Meyer



Approved: **HARLEY A. SIME**  
**MONROE CO. SURVEYOR**



SURVEY CONTROL ORDER

Horizontal	_____
Vertical	_____

WISCONSIN COORDINATE SYSTEM

Corner	East (X)	North (Y)	Elevation (Z)	Zone
Control Sta. Name				

City, Village or Town Wells  
County of Monroe  
Wisconsin

COUNTY SURVEYOR FORM NO. 1