

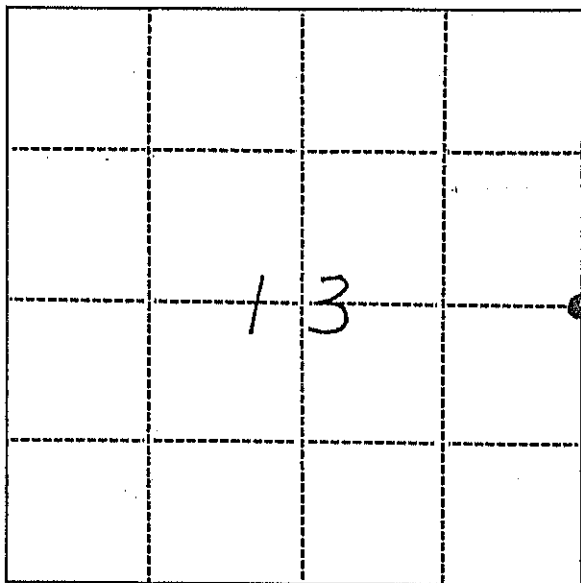
# U.S. PUBLIC LAND SURVEY MONUMENT RECORD

### INSTRUCTIONS:

This record shall show the location of the corner and shall include all of the following nine elements (a through i).

- (a) Identify the corner by reference to the U.S. public land survey system.  
O = Corner monument restored.

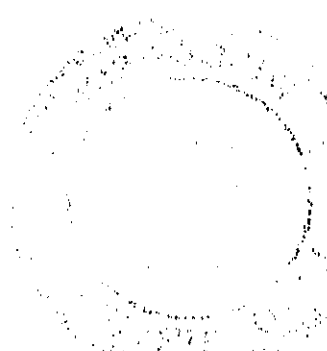
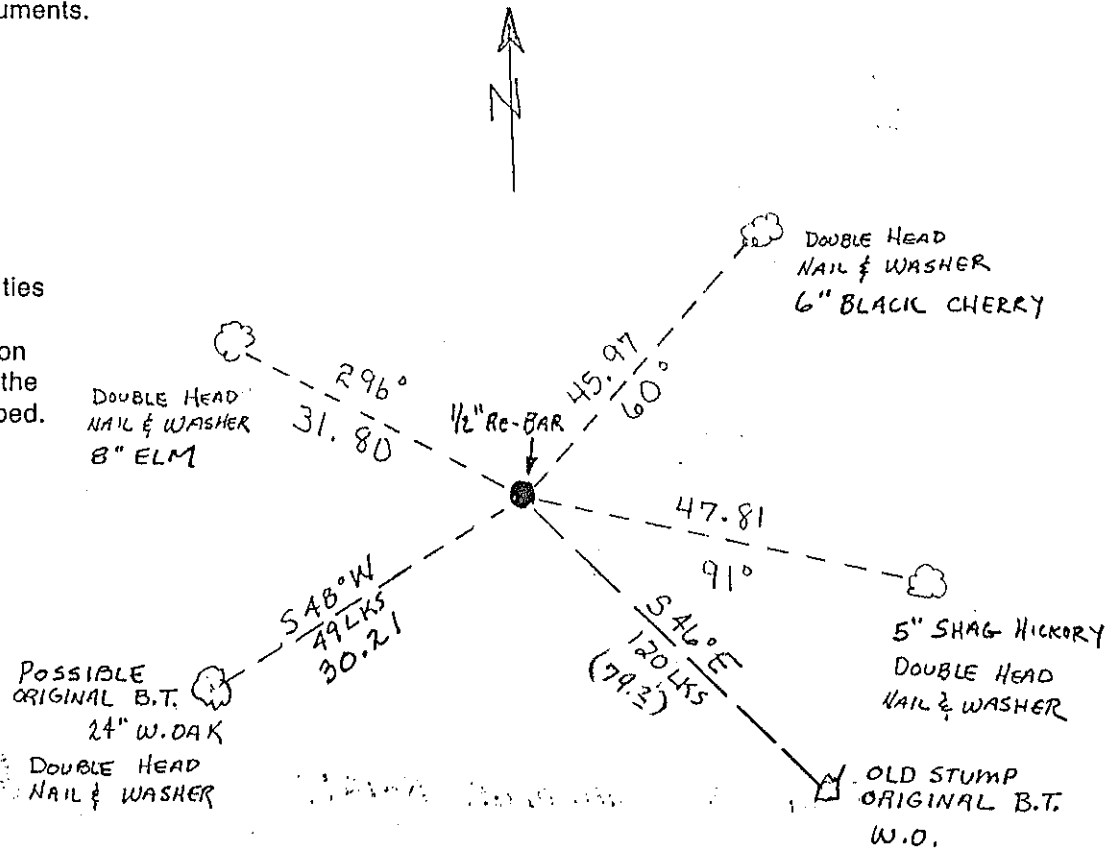
E 1/4 COR  
SEC 13-16-3W



- (b) Describe any record evidence, monument evidence, occupational evidence, testimonial evidence or any other material evidence you considered, and whether the monument was found or placed.  
APPROXIMATE LOCATION OF THE CORNER WAS DONE BY SINGLE PROPORTIONATE MEASUREMENT. BEARING TREE " W.OAK 8 S 48 W 49 ". I FOUND A 24" W.O. WITH "BLAZE" ON NE SIDE OF TREE. BEARING TREE " W.OAK 8 S 46 E 120 ". I FOUND OLD ROTTED STUMP. (W.O.). SET CORNER FROM BEARING TREES. FELL WITHIN A FEW FEET OF MILE SPLIT.

- (c) In the plan view drawing below, provide reference ties to at least 4 witness monuments, or if the location is within a municipality, to at least 2 witness monuments. (Witness monuments shall be made of concrete, natural stone, iron or other equally durable material.)  
Describe witness monuments.

- (d) Show a plan view drawing depicting the relevant monuments and reference ties which is sufficient in detail to enable accurate relocation of the corner monument if the corner monument is disturbed. Indicate north.



SIGN PLACED 4/6/90  
 Replaced 1/2" Re-Bar with Harrison  
 On 4/6/90 Crew: Meyer - Kenworthy  
 Comments \_\_\_\_\_