

21603112000

I, William C. Jung, do hereby certify that on the 8th day of May 19 79, I found (evidence) ~~(no evidence)~~ of the East 1/4 corner of Section 11, T. 16 N., R. 3 W. Fourth Principal Meridian, and I re-established said corner according to the Wisconsin Statutes as shown and described hereon.

History of corner establishment since Original Government Survey

None recorded since the original government survey.

Description of corner evidence found:

Set a Harrison marker on line and equidistant between the section corners.

Dated this 16th day of Feb. 1981

William C. Jung

William C. Jung, R.L.S. 1323
Title

COUNTY SURVEYOR FORM NO. 1

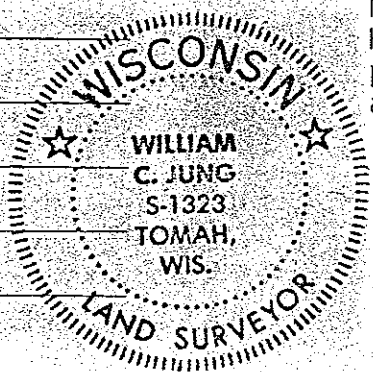
Description of corner and witness monuments, references and accessories used to perpetuate the original or re-established location of this corner:

Witnesses to corner location:

Jung

Dechant

NOTE: ALL TREES DOUBLE BLAZED WITH NAIL & CAP SET



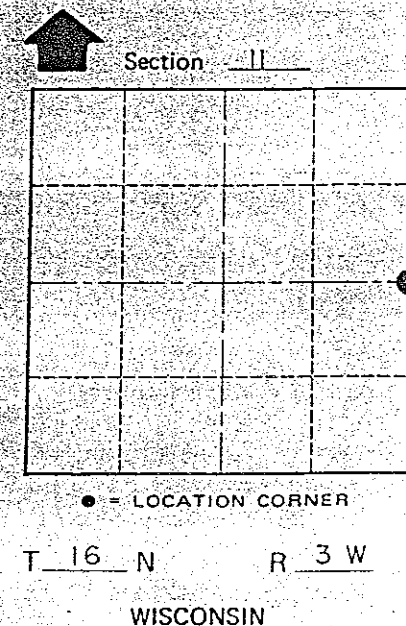
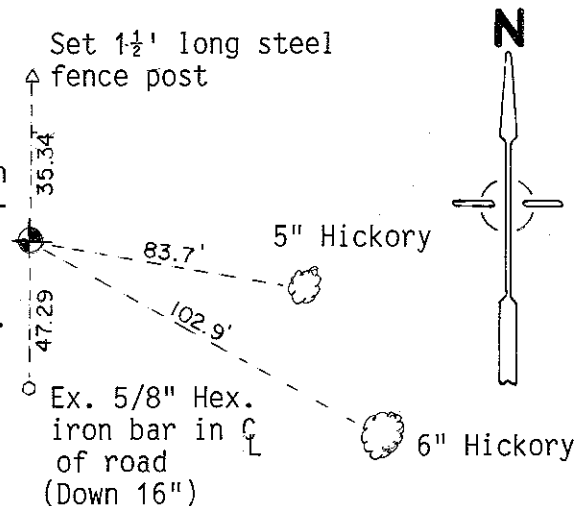
Note: I found the original Harrison leaning and in 3 pieces. I set a new Harrison at the corner from the existing ties. Set Guard Sign 6" west of Harrison.

Crew: Bryan H. Meyer, R.L.S.

John Kenworthy

Brian Forsythe

Date: May 4th, 1989



Approved: **HARLEY A. SIME**
MONROE CO. SURVEYOR

SURVEY CONTROL ORDER

Horizontal	_____
Vertical	_____

WISCONSIN COORDINATE SYSTEM

Corner	East (X)	North (Y)	Elevation (Z)	Zone
Control Sta. Name				

City, Village or Town Wells
County of Monroe

I, William C. Jung, do hereby certify that on the 8th day of May 19 79, I found (evidence) ~~(no evidence)~~ of the East 1/4 corner of Section 11, T 16 N, R 3 W Fourth Principal Meridian, and I re-established said corner according to the Wisconsin Statutes as shown and described hereon.

History of corner establishment since Original Government Survey

None recorded since the original government survey.

Description of corner evidence found:

Set a Harrison marker on line and equidistant between the section corners.

Dated this 16th day of Feb. 1981.

William C. Jung

William C. Jung, R.L.S. 1323
Title

COUNTY SURVEYOR FORM NO. 1

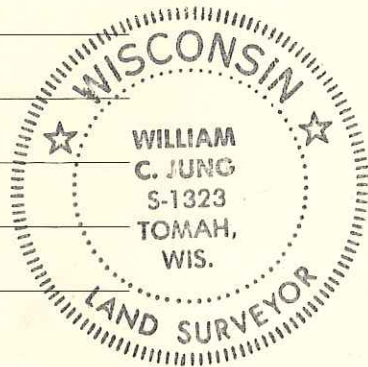
Description of corner and witness monuments, references and accessories used to perpetuate the original or re-established location of this corner:

NOTE: ALL TREES DOUBLE BLAZED WITH NAIL & CAP SET

Witnesses to corner location:

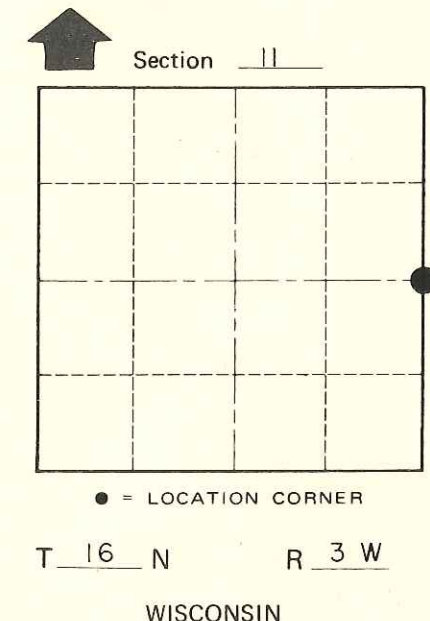
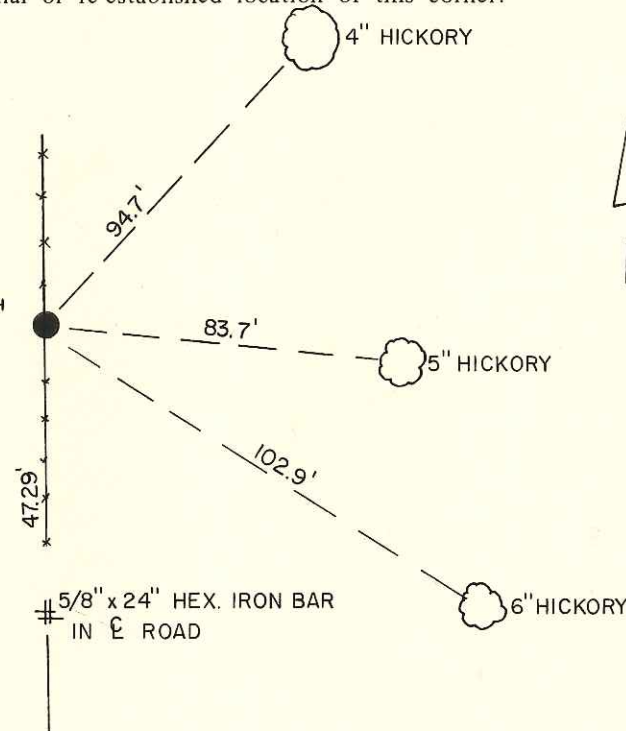
Jung

Dechant



Approved: **HARLEY A. SIME**
MONROE CO. SURVEYOR

SET HARRISON, WITH ROCKS MOUNDED AROUND IT.



SURVEY CONTROL ORDER

Horizontal	_____
Vertical	_____

WISCONSIN COORDINATE SYSTEM

Corner	East (X)	North (Y)	Elevation (Z)	Zone
Control Sta. Name				

City, Village or Town Wells
County of Monroe