

CERTIFICATE

CERTIFIED LAND CORNER

No. 44

21603110020

I, William C. Jung, do hereby certify that on the 8th day of May 1979, I found (evidence) (no evidence) of the South 1/4 corner of Section 11, T 16 N, R 3 W, Fourth Principal Meridian, and I re-established said corner according to the Wisconsin Statutes as shown and described hereon.

Dated this 16th day of Feb. 1981.

William C. Jung (signature)

William C. Jung, R.L.S. 1323 Title

History of original corner establishment:

Kenyon (?) was at this corner in April of 1883. Fred Holden was at this corner in November of 1899 and April of 1900.

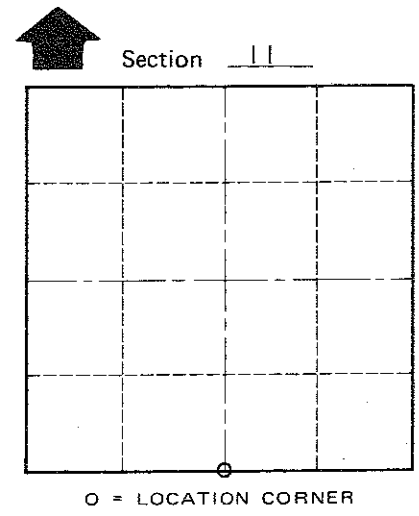
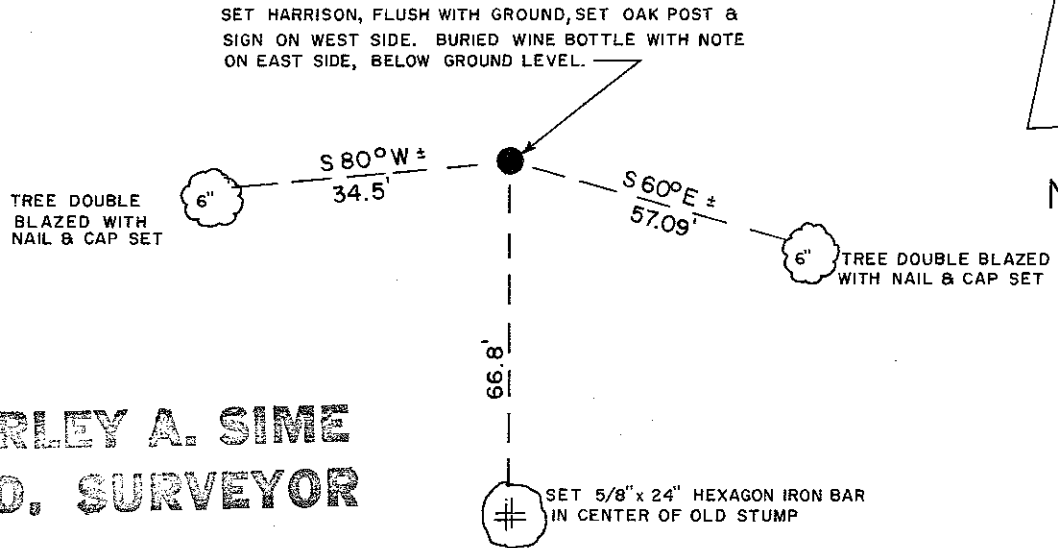
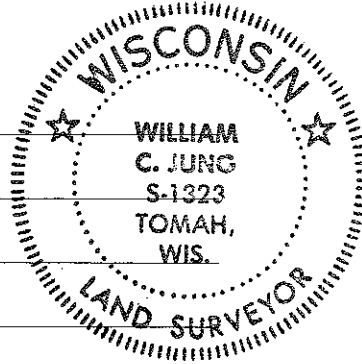
Description of corner evidence found:

Found Holden's old bearing tree stump. Reset the corner using the stump. Set a Harrison marker.

Description of corner and witness monuments, references and accessories used to perpetuate the original or re-established location of this corner:

Witnesses to corner location:

Jung
Dechant



Approved: HARLEY A. SIME
MONROE CO. SURVEYOR

SURVEY CONTROL ORDER

Horizontal
Vertical

WISCONSIN COORDINATE SYSTEM

Table with columns: Corner, Control Sta. Name, East (X), North (Y), Elevation (Z), Zone

City, Village or Town Wells
County of Monroe

COUNTY SURVEYOR FORM NO. 1