

21603090020

I, Ronald D. Parish, do hereby certify that on the 28th day of August 1987, I found (evidence) (no evidence) of the North 1/4 corner of Section 16, T 16 N, R 3 W. Fourth Principal Meridian, and I re-established said corner according to the Wisconsin Statutes as shown and described hereon.

History of corner establishment since Original Government Survey

No known history since the Original Government Survey.

Description of corner evidence found:

Found no evidence of corner. Set corner on a straight line between the Northwest corner and Northeast corner of Section 16 and at an old north-south fence line. This fit the distance to the East fairly well, but is short to the West.

Dated this 4th day of Sept. 1987.

Ronald D. Parish

Ronald D. Parish

Registered Land Surveyor

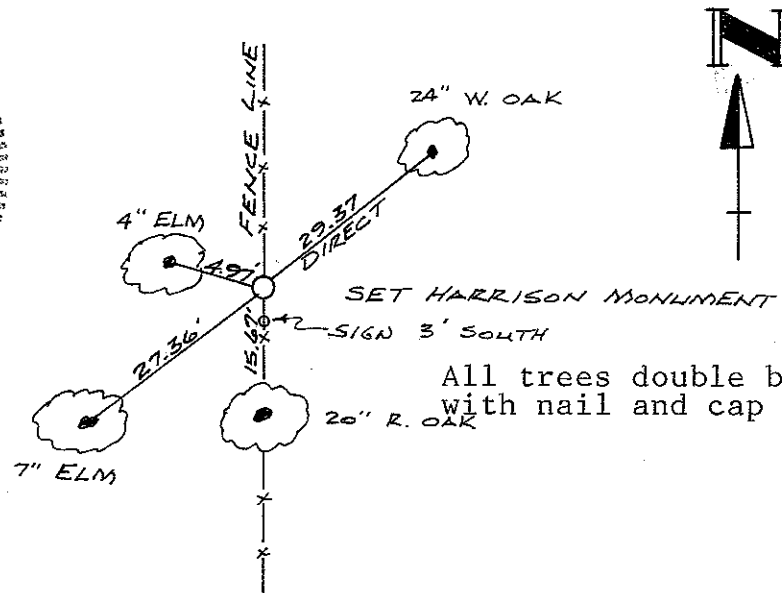
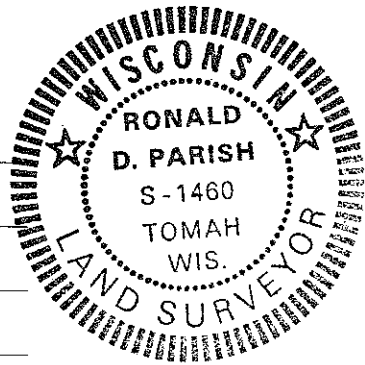
Title

Description of corner and witness monuments, references and accessories used to perpetuate the original or re-established location of this corner:

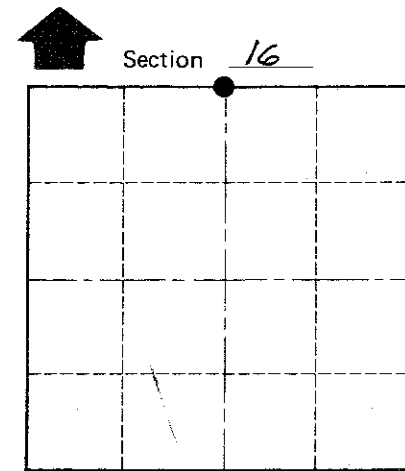
Witnesses to corner location:

Ronald Parish

Robert Sherwood



All trees double blazed with nail and cap in one blaze.



• = LOCATION CORNER

T 16 N R 3 W

WISCONSIN

COUNTY SURVEYOR FORM NO. 1

SURVEY CONTROL ORDER

Horizontal	_____
Vertical	_____

WISCONSIN COORDINATE SYSTEM

Corner	East (X)	North (Y)	Elevation (Z)	Zone
Control Sta. Name				

City, Village or Town Wells

County of Monroe