

32

U.S. PUBLIC LAND CORNER MAINTENANCE

Corner ID : S1/4 Sec.6, T16N-R3W

21603060020

<u>DATE</u>	<u>CREW</u>	<u>MONUMENT TYPE</u> -----
March 26, 2014	Zachariah P. Dechant Gary L. Dechant	Found Harrison Monument south of trail. Survey sign 1/2' south. 2' east of rectangular stone memorial for family dog

Zachariah P. Dechant 1744

References:

	<u>Bearing</u>	<u>Distance</u>
1) Set 3/4"x24" hexagon iron bar, down 4", 9' north of trail	N19E	33.14'
2) Set 3/4"x24" hexagon iron bar, down 4", 5' NW of 3" White Oak	S62E	28.35'
3) Set 3/4"x24" hex iron bar, down 4", 3' west of 8" Jack Pine	S22W	25.36'
4) Set 3/4"x24" hex iron bar, down 4", 4' north of 8" Jack Pine	S89W	27.64'

NOTE: HEIDECHE STATES IN 1980 THAT HE SET A 1 1/2" I.B AT THIS CORNER. FOUND HARRISON AT CORNER.

COORDINATES:

32

21603060020

I, Mark R. Heidecke, do hereby certify that on the 29th day of May 19 80, I found ~~XXXXXX~~ (no evidence) of the South 1/4 corner of Section 6, T 16 N, R 3 W Fourth Principal Meridian, and I re-established said corner according to the Wisconsin Statutes as shown and described hereon.

Dated this 5th day of June 19 80.

Mark R. Heidecke

Registered Land Surveyor

Title

History of corner establishment since Original Government Survey

The County Surveyor's Record shows that Henry Maddin, Surveyor, in 1847 ran the South line of Section 6 and referenced the South 1/4 Corner to a Jack Oak and Hemlock.

Description of corner evidence found:

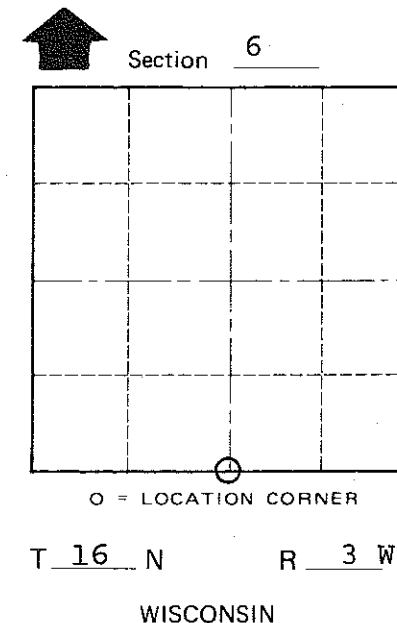
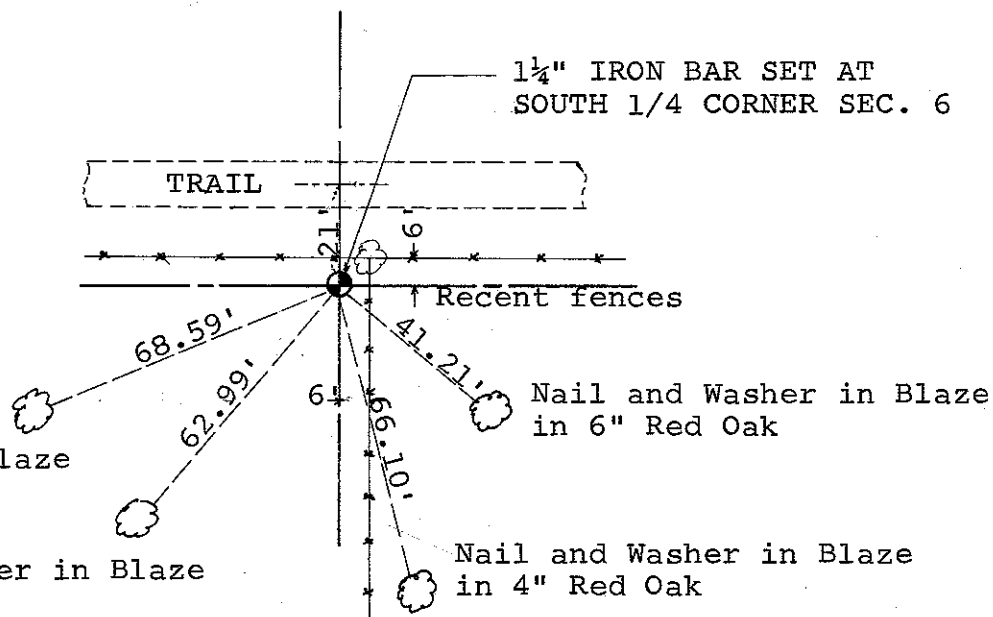
The trees which referenced the corner no longer exist and no further evidence was found. A 1 1/4" Iron Bar was set on a straight line at a pro-rated distance between the SW Corner and the SE Corner of Section 6.

Description of corner and witness monuments, references and accessories used to perpetuate the original or re-established location of this corner:

Witnesses to corner location:

Mark Heidecke

Lawrence Feddersen



COUNTY SURVEYOR FORM NO. 1

SURVEY CONTROL ORDER

Horizontal	_____
Vertical	_____

WISCONSIN COORDINATE SYSTEM

Corner	East (X)	North (Y)	Elevation (Z)	Zone
Control Sta. Name				

City, Village or Town of Wells
County of Monroe