

CERTIFICATE

CERTIFIED LAND CORNER

No. 29

21603050000

I, Garold A. Sime, do hereby certify that on the 25th day of May 19 83, I found (evidence) ~~no evidence~~ of the Southwest corner of Section 4, T 16 N, R 3 W Fourth Principal Meridian, and I re-established said corner according to the Wisconsin Statutes as shown and described hereon.

Dated this 19th day of Jan. 1984.

Garold A. Sime

Deputy County Surveyor
Title

History of corner establishment since Original Government Survey

Fred Holden was here in November of 1905 and set an iron bar at the corner. He was here again in September of 1908.

Description of corner evidence found:

Accepted intersection of roads and fenceline as the best available evidence. Could not find Holden's bar.

Description of corner and witness monuments, references and accessories used to perpetuate the original or re-established location of this corner:

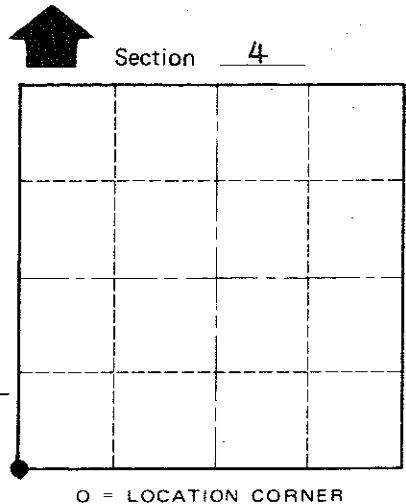
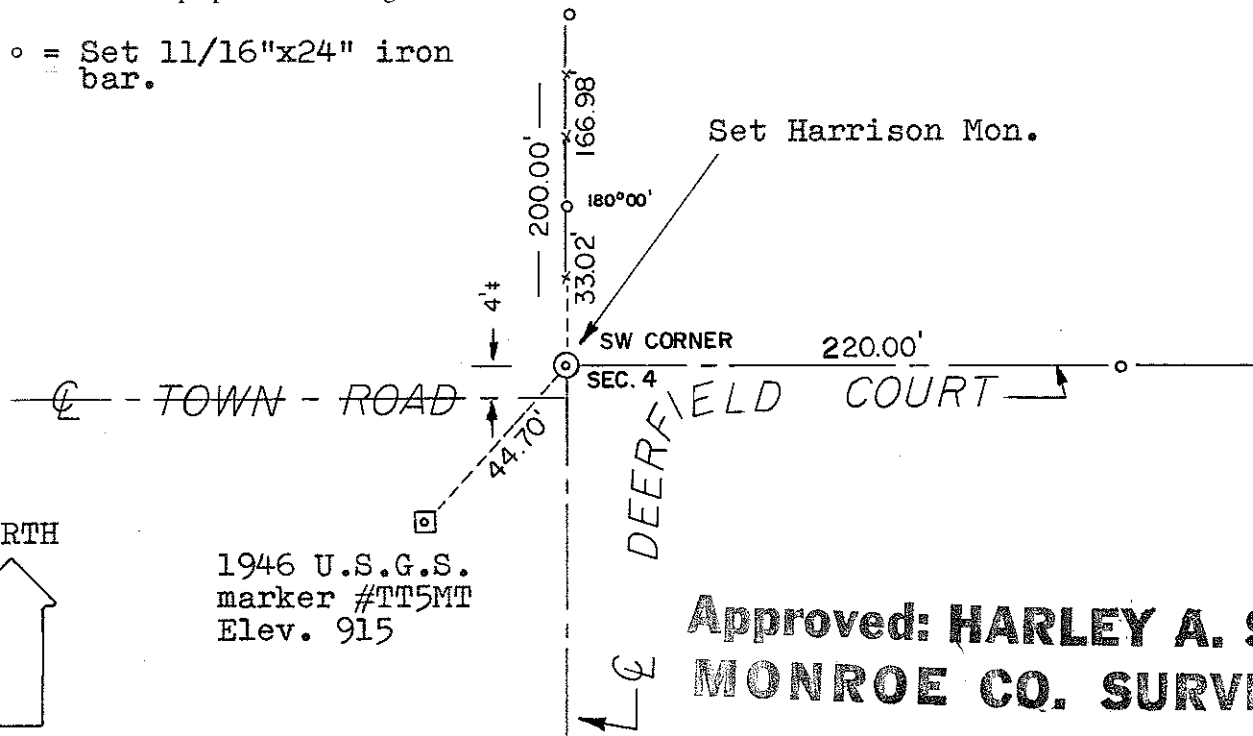
Witnesses to corner location:

Garold A. Sime

Dallas Wilhite



o = Set 1 1/16" x 24" iron bar.



T 16 N R 3 W
WISCONSIN

Approved: **HARLEY A. SIME**
MONROE CO. SURVEYOR

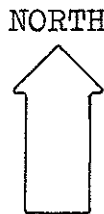
~~City/Village of~~ Town of Wells
County of Monroe

COUNTY SURVEYOR FORM NO. 1

SURVEY CONTROL ORDER

Horizontal _____
Vertical _____

Corner	East (X)	North (Y)	Elevation (Z)	Zone
Control Sta. Name				



WISCONSIN COORDINATE SYSTEM