

21603040020

I, Garold A. Sime do hereby certify that on the 2nd day of June 19 83, I found (evidence) ~~no evidence~~ of the South 1/4 corner of Section 4, T 16 N, R 3 W Fourth Principal Meridian, and I re-established said corner according to the Wisconsin Statutes as shown and described hereon.

History of corner establishment since Original Government Survey

No recorded history.

Description of corner evidence found:

Accepted 3-way fence corner as the best available evidence.

Dated this 19th day of Jan. 19 84.

Garold A. Sime

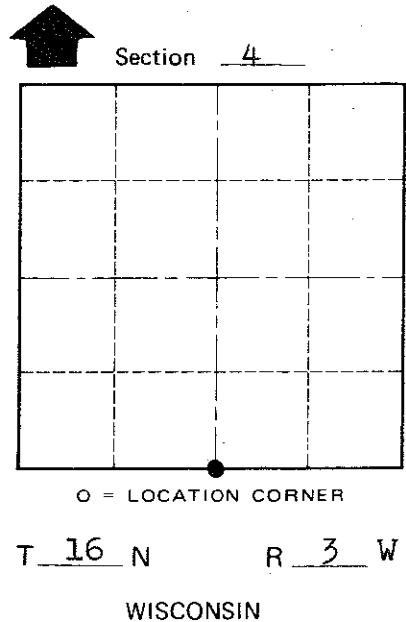
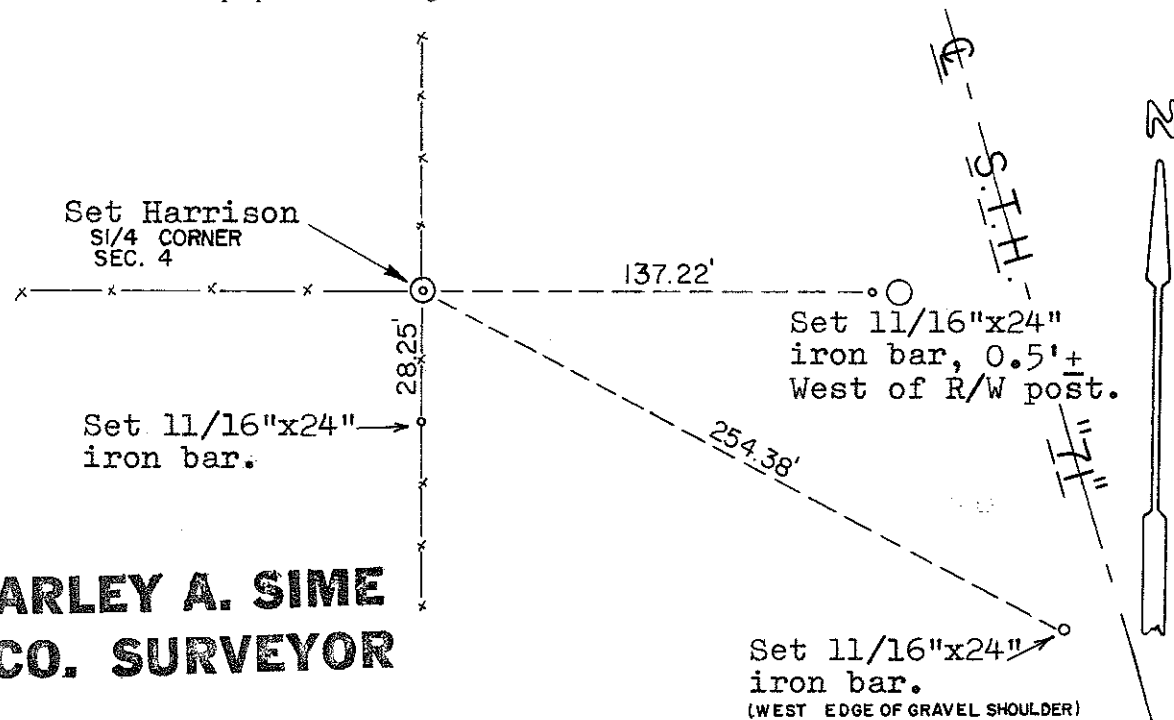
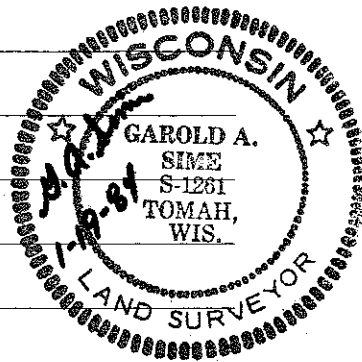
Deputy County Surveyor
Title

Description of corner and witness monuments, references and accessories used to perpetuate the original or re-established location of this corner:

Witnesses to corner location:

Garold A. Sime

Dallas Wilhite



Approved: **HARLEY A. SIME**
MONROE CO. SURVEYOR

SURVEY CONTROL ORDER

Horizontal _____
Vertical _____

WISCONSIN COORDINATE SYSTEM

Corner	East (X)	North (Y)	Elevation (Z)	Zone
Control Sta. Name				

~~City, Village or~~ Town of Wells
County of Monroe

COUNTY SURVEYOR FORM NO. 1