

**21603030000**

I, William C. Jung, do hereby certify that on the 8th day of May 19 79, I found (evidence) () of the Northwest corner of Section 11, T 16 N, R 3 W Fourth Principal Meridian, and I re-established said corner according to the Wisconsin Statutes as shown and described hereon.

Dated this 16th day of Feb. 19 81.

William C. Jung  
William C. Jung, R.L.S. 1323  
Title

History of corner establishment since Original Government Survey

Fred Holden set a stone at this corner in May of 1905. He used this stone in another survey in December of 1909.

Description of corner evidence found:

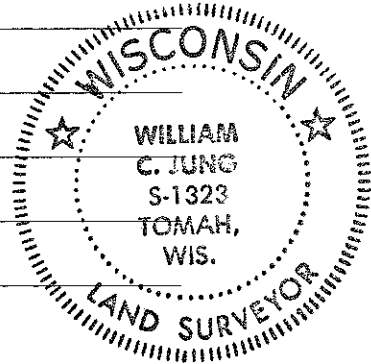
Found Holden's stone. Set a Harrison on the North side of the stone. The stone is the corner.

Description of corner and witness monuments, references and accessories used to perpetuate the original or re-established location of this corner:

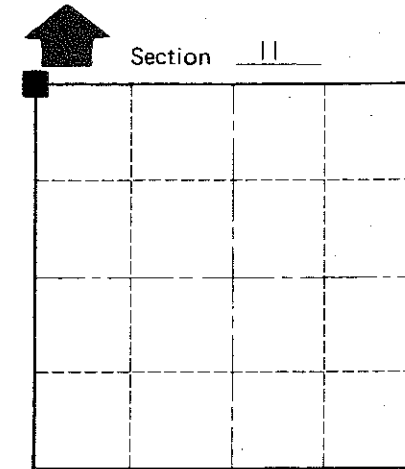
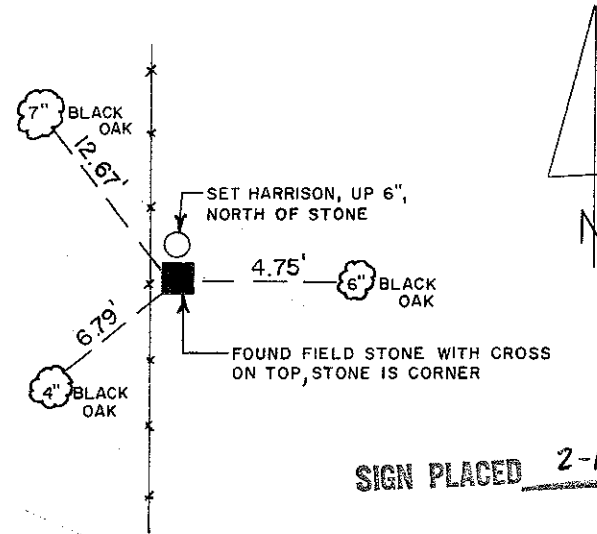
Witnesses to corner location:

Jung  
Dechant

NOTE: ALL TREES DOUBLE BLAZED WITH NAIL & CAP SET



Approved: **HARLEY A. SIME**  
**MONROE CO. SURVEYOR**



T 16 N R 3 W  
WISCONSIN

SIGN PLACED 2-10-92

SURVEY CONTROL ORDER

Horizontal	_____
Vertical	_____

WISCONSIN COORDINATE SYSTEM

Corner	East (X)	North (Y)	Elevation (Z)	Zone
Control Sta. Name				

or Town Wells  
County of Monroe

COUNTY SURVEYOR FORM NO. 1