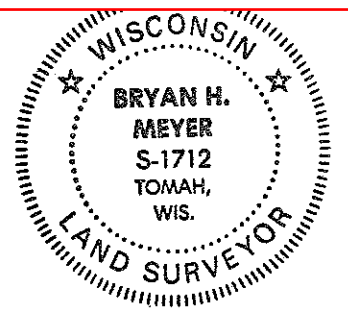


CERTIFICATE

CERTIFIED LAND CORNER

No. 19

21603022000



Bryan H. Meyer
H. A. Sime and Associates
P. O. Box 705
Tomah, Wisconsin 54660
(608)-372-5392

I, Bryan H. Meyer, do hereby certify that on the 2nd day of March 19 92, I found (evidence) ~~no evidence~~ of the West 1/4 corner of Section 1, T 16 N, R 3 W Fourth Principal Meridian, and I re-established said corner according to the Wisconsin Statutes as shown and described hereon.

Dated this 16th day of June 19 92.

Bryan H. Meyer

Deputy County Surveyor

History of corner establishment since Original Government Survey

Fred Holden was here in May of 1905.

Description of corner evidence found:

I re-established this corner on line between the Northwest and Southwest corners of Section 1 and in an East-West fenceline.

Description of corner and witness monuments, references and accessories used to perpetuate the original or re-established location of this corner:

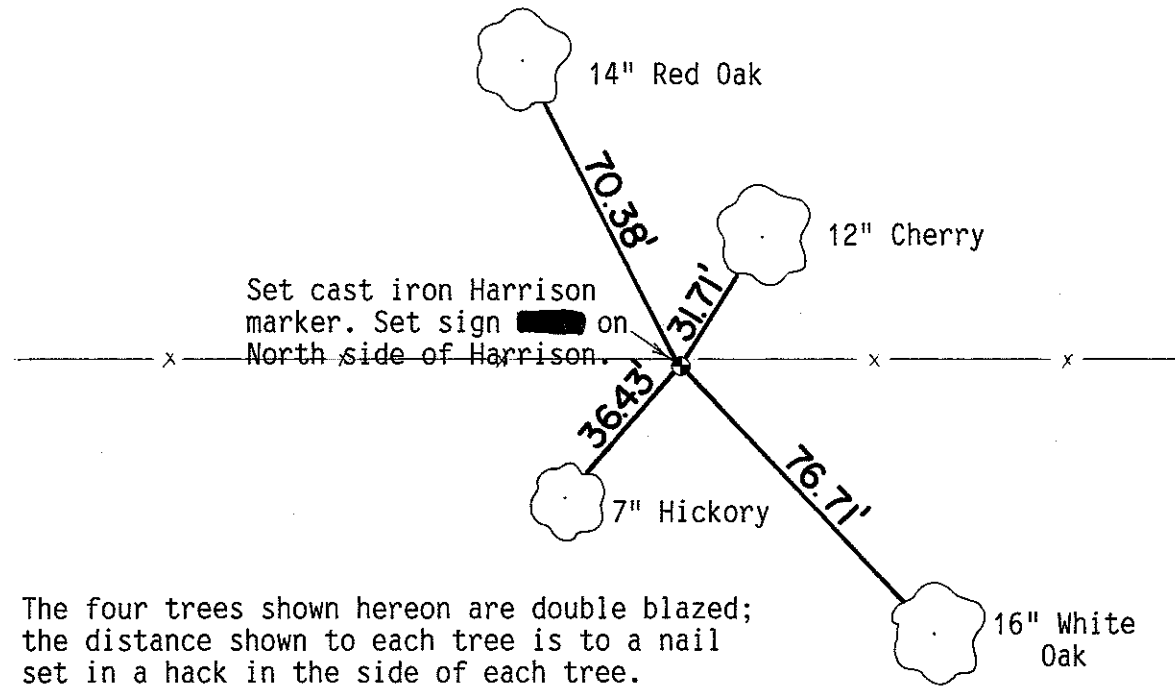
Crew: Meyer, Kenworthy
Date: March 2, 1992

Witnesses to corner location:

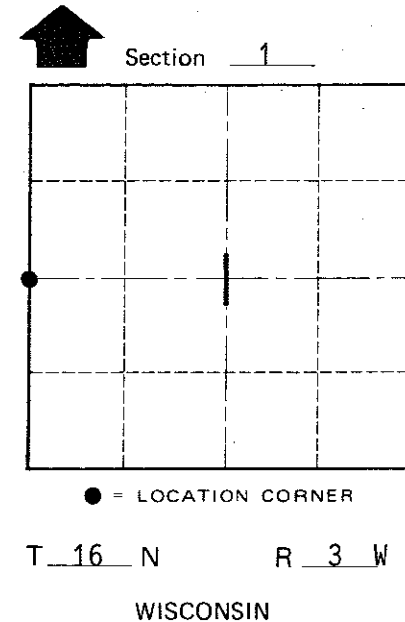
Bryan H. Meyer

John F. Kenworthy

COUNTY SURVEYOR FORM NO. 1



The four trees shown hereon are double blazed; the distance shown to each tree is to a nail set in a hack in the side of each tree.



SURVEY CONTROL ORDER

Horizontal	_____
Vertical	_____

WISCONSIN COORDINATE SYSTEM

Corner	East (X)	North (Y)	Elevation (Z)	Zone
Control Sta. Name				

~~City, Village or~~ Town of Wells

County of Monroe