

21603020020

I, William C. Jung, do hereby certify that on the 22nd day of April 1981, I found (evidence) ~~(evidence)~~ of the North 1/4 corner of Section 11, T 16 N, R 3 W Fourth Principal Meridian, and I re-established said corner according to the Wisconsin Statutes as shown and described hereon.

History of corner establishment since Original Government Survey

Holden set a cross on a natural rock in May of 1905.

Dated this 14th day of Aug. 1981.

William C. Jung

Registered Land Surveyor

Title

William C. Jung

Description of corner and witness monuments, references and accessories used to perpetuate the original or re-established location of this corner:

Description of corner evidence found:

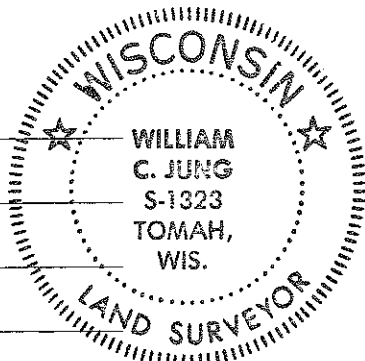
Found a very large flat natural stone with a cross in the northwest corner; set a 3/4" x 24" iron bar on the west side of stone.

COUNTY SURVEYOR FORM NO. 1

Witnesses to corner location:

William C. Jung

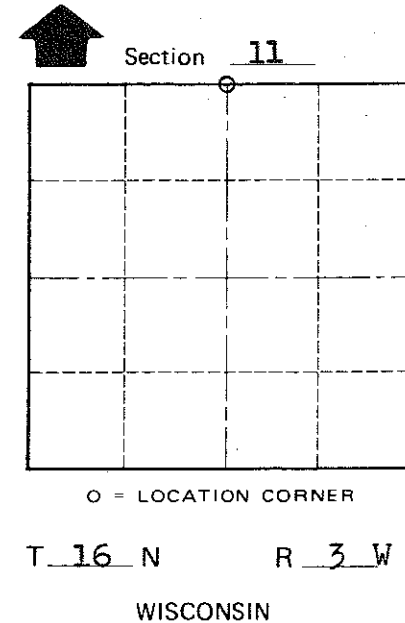
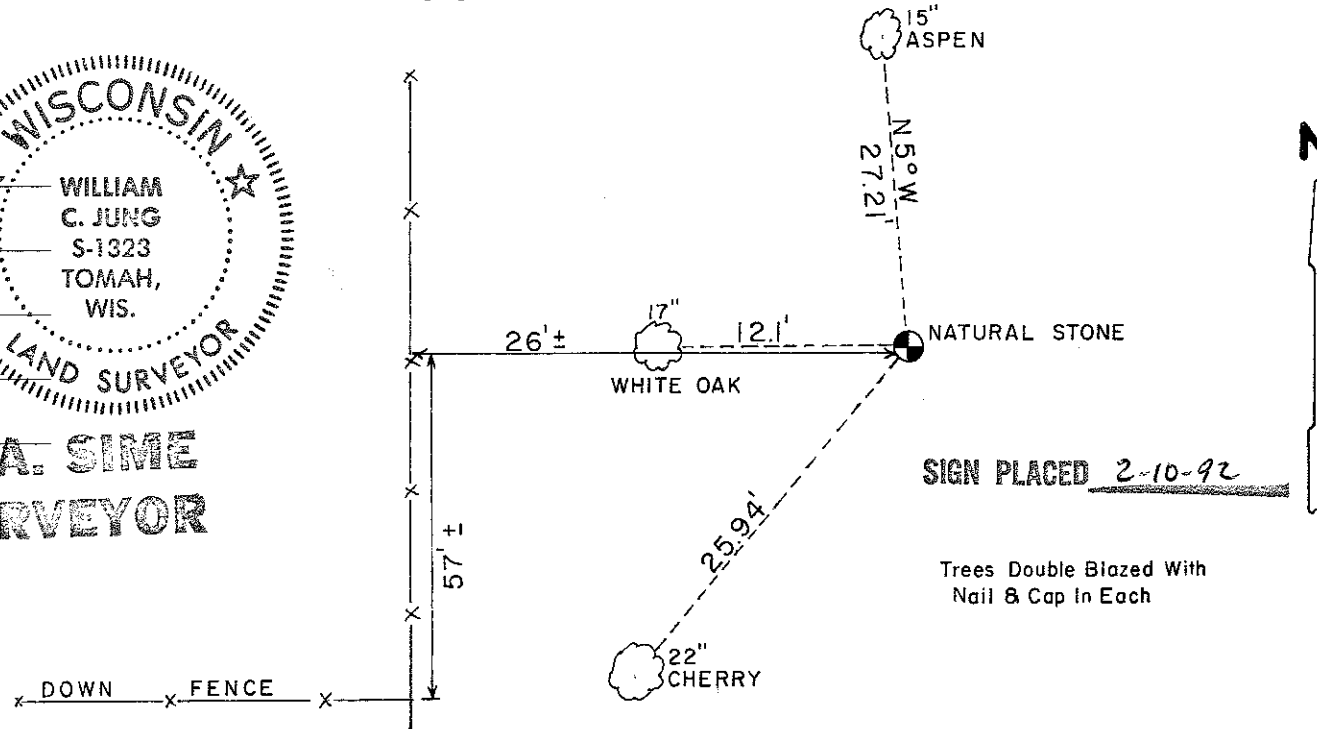
Carlton R. Pietz



Approved: **HARLEY A. SIME**
MONROE CO. SURVEYOR

SURVEY CONTROL ORDER

Horizontal	_____
Vertical	_____



WISCONSIN COORDINATE SYSTEM

Corner	East (X)	North (Y)	Elevation (Z)	Zone
Control Sta. Name				

~~City, Village or~~ Town Wells
County of Monroe
Wisconsin