

CERTIFICATE

CERTIFIED LAND CORNER

No. 23

21603020000

I, William C. Jung, do hereby certify that on the 8th day of May 19 79, I found (evidence) ~~(no evidence)~~ of the Northeast corner of Section 11, T 16 N, R 3 W Fourth Principal Meridian, and I re-established said corner according to the Wisconsin Statutes as shown and described hereon.

History of corner establishment since Original Government Survey

Fred Holden was at this corner in May of 1905.

Description of corner evidence found:

Set a Harrison marker at the occupied corner. Accepted this point as the best available evidence of the original government corner. Field evidence found and measurements along the North and East lines of the section support this.

Dated this 17th day of Feb. 19 81.

William C. Jung

William C. Jung, R.L.S. 1323

Title

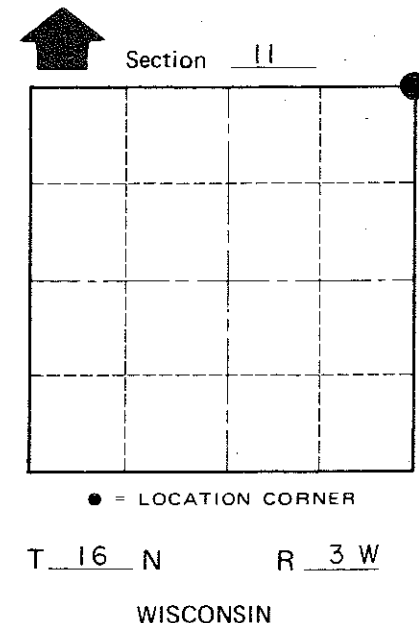
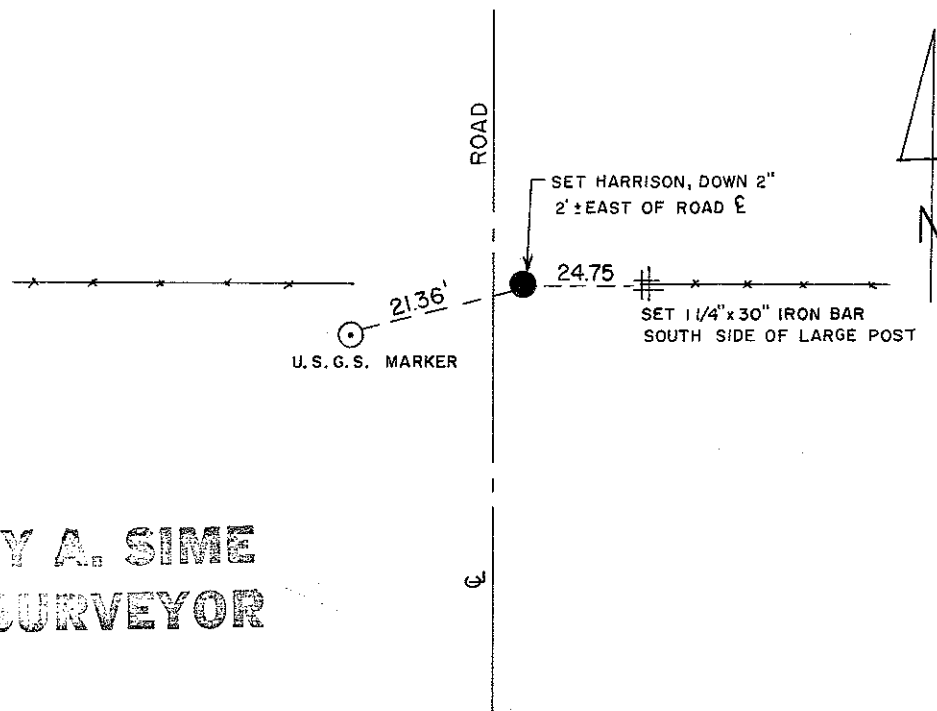
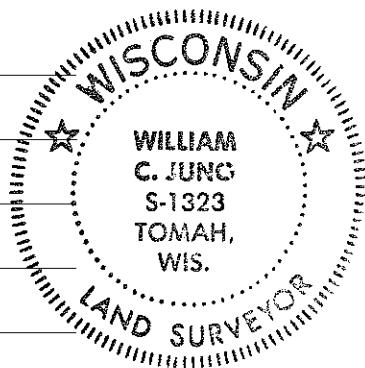
COUNTY SURVEYOR FORM NO. 1

Description of corner and witness monuments, references and accessories used to perpetuate the original or re-established location of this corner:

Witnesses to corner location:

Jung

Dechant



Approved: **HARLEY A. SIME**
MONROE CO. SURVEYOR

SURVEY CONTROL ORDER

Horizontal _____
Vertical _____

WISCONSIN COORDINATE SYSTEM

Corner	East (X)	North (Y)	Elevation (Z)	Zone
Control Sta. Name				

City, Village or Town Wells
County of Monroe