

CERTIFICATE

I, Bryan H. Meyer, do hereby certify that on the 2nd day of March 19 92, I found (evidence) ~~of the~~ of the South 1/4 corner of Section 1, T. 16 N, R. 3 W Fourth Principal Meridian, and I re-established said corner according to the Wisconsin Statutes as shown and described hereon.

Dated this 18th day of May 19 92.

*Bryan H. Meyer*

Deputy County Surveyor  
Title

CERTIFIED LAND CORNER

History of corner establishment since Original Government Survey

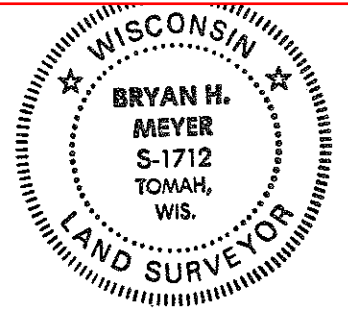
Nothing recorded.

Description of corner evidence found:

I re-established this corner on line between the Southwest and Southeast corners of Section 1 and on line with the fence line projections from the North and South.

No. 22

**21603010020**



H. A. Sime and Associates  
P. O. Box 705  
Tomah, Wisconsin 54660  
Phone: (608)-372-5392

COUNTY SURVEYOR FORM NO. 1

Description of corner and witness monuments, references and accessories used to perpetuate the original or re-established location of this corner:

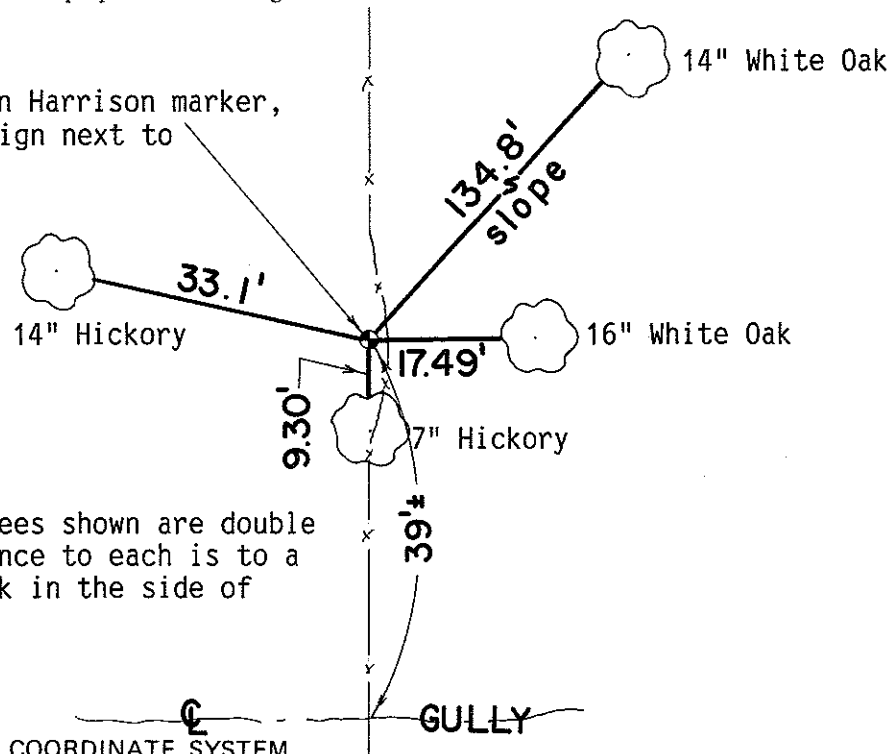
Crew: Meyer, Kenworthy  
Date: March 2, 1992

Witnesses to corner location:

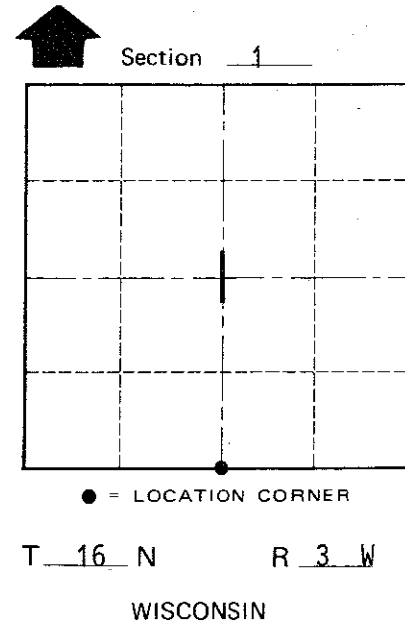
John Kenworthy

Bryan H. Meyer

Set cast iron Harrison marker, flush. Set sign next to Harrison.



NOTE: The four trees shown are double blazed; the distance to each is to a nail set in a hack in the side of each tree.



SURVEY CONTROL ORDER

Horizontal	_____
Vertical	_____

WISCONSIN COORDINATE SYSTEM

Corner	East (X)	North (Y)	Elevation (Z)	Zone
Control Sta. Name				

~~City, Village or~~ Town of Wells

County of Monroe