

30

**U.S. PUBLIC LAND CORNER
MAINTENANCE**

Corner ID : S1/4 Sec.5, T16N-R2W

21602050020

<u>DATE</u>	<u>CREW</u>	<u>MONUMENT TYPE -----</u>
April 22, 2015	Zachariah P. Dechant Gary L. Dechant	Harrison monument intact in centerline Kellogg Ave Down 8"

References:

	<u>Bearing</u>	<u>Distance</u>
1) Set 3/4"x24" round iron bar in field, down 14"	N37E	71.57'
2) Set 3/4"x24" round iron bar in field, down 14"	S40E	53.15'
3) Set 3/4"x24" round iron bar in field, down 14"	S37W	56.85'
4) Set 3/4"x24" round iron bar 5' SE of 10" Spruce in lawn down 6"	N40W	44.89'

Harrison and reference markers are set on straight lines.

Gary L. Dechant

April 22, 2015

I, William C. Jung, do hereby certify that on the 6th day of July 1983, I found (evidence) ~~(no evidence)~~ of the North 1/4 corner of Section 8, T 16 N, R 2 W Fourth Principal Meridian, and I re-established said corner according to the Wisconsin Statutes as shown and described hereon.

Dated this 12th day of July 1983.

William C. Jung
Deputy County Surveyor, R.L.S. 1323
Title

History of corner establishment since Original Government Survey

A. S. Ingalls was at this corner in April of 1873. Fred Holden found the original corner at this location in May of 1910.

**See Reverse Side
For Maintenance**

Description of corner evidence found:

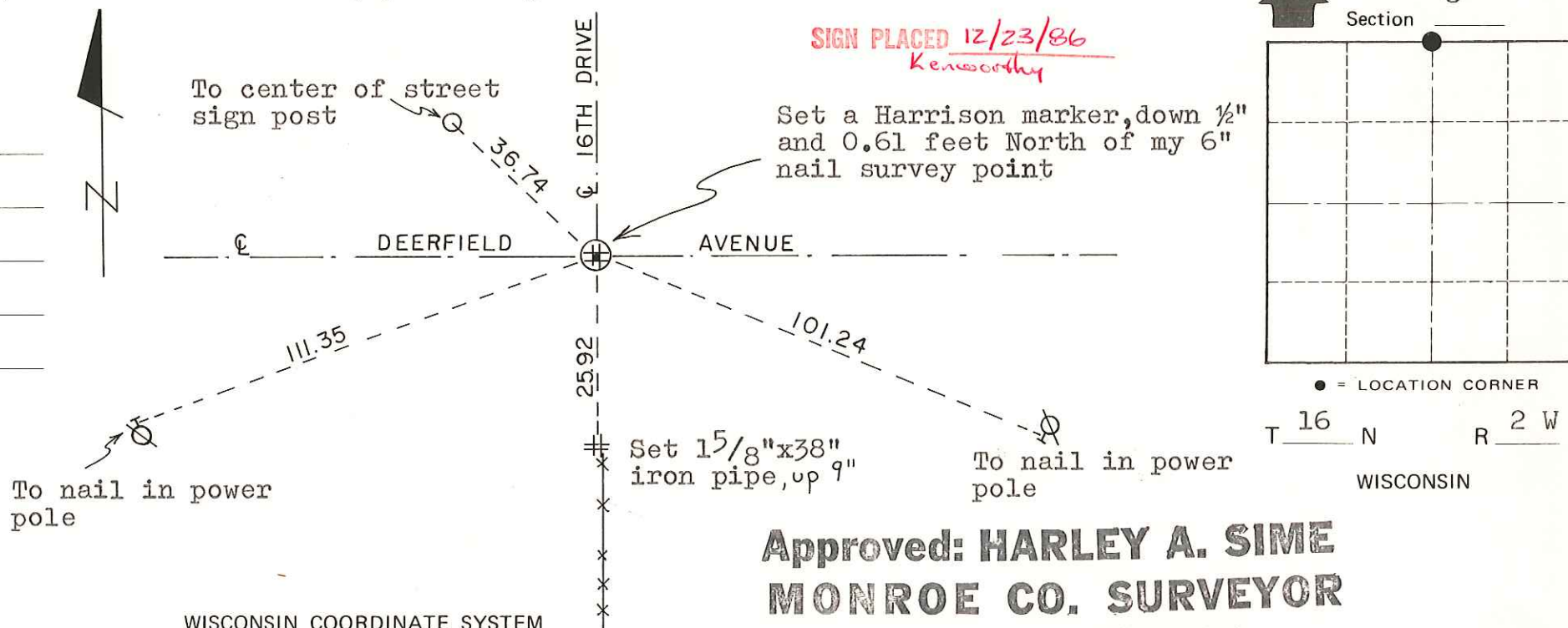
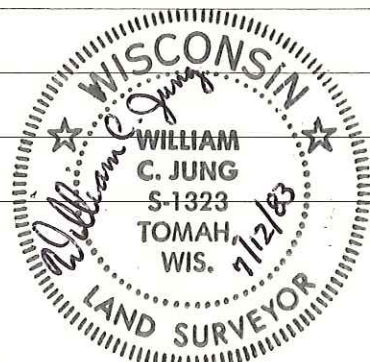
I set the corner on line between the section corners at the NW and NE of Section 8, and on line with an old line fence to the South. The 1/2 mile to the East which measures 2601.33+ is short of the 1/2 mile to the West which measures 2626.60+, but an old line fence going to the South at the N1/16NE measures about 1298.5 feet West of the NE corner of Section 8. This old forty fence would thus fit this short 1/2 mile. This corner also falls at the road intersection and fits the occupied corner.

Description of corner and witness monuments, references and accessories used to perpetuate the original or re-established location of this corner:

Witnesses to corner location:

William C. Jung

Dallas Wilhite



SURVEY CONTROL ORDER

Horizontal	_____
Vertical	_____

WISCONSIN COORDINATE SYSTEM

Corner	East (X)	North (Y)	Elevation (Z)	Zone
Control Sta. Name				

**Approved: HARLEY A. SIME
MONROE CO. SURVEYOR**

~~City, Village~~ or Town Ridgeville
County of Monroe
Wisconsin

COUNTY SURVEYOR FORM NO. 1