

# 29

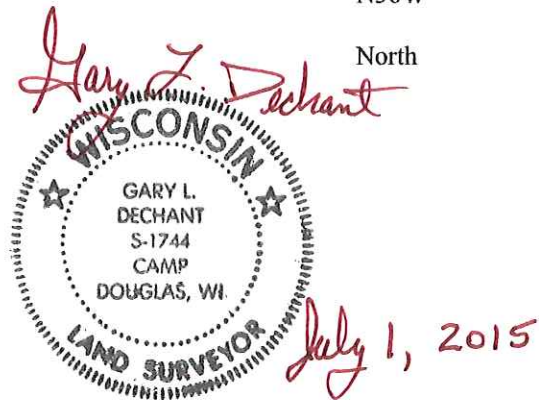
**U.S. PUBLIC LAND CORNER  
MAINTENANCE**

**Corner ID : SE Sec.5, T16N-R2W  
21602050000**

<u>DATE</u>	<u>CREW</u>	<u>MONUMENT TYPE -----</u>
July 1, 2015	Zachariah P. Dechant Gary L. Dechant	Harrison monument with top broke off in centerline Kellogg Ave. Down 4". 239' west of driveway 18124 Kellogg Ave.

References:

	<u>Bearing</u>	<u>Distance</u>
1) Set 3/4"x24" iron bar 16' east of Flowering Crab Apple	N41E	46.47'
2) Existing 3/4"x24" iron bar	South	32.79' (32.77')
3) Set 3/4"x24" iron bar in field, down 14"	N36W	54.63'
4) Existing 3/4"x24" iron bar in lawn, down 3"	North	35.73' (35.81')



I, William C. Jung, do hereby certify that on the 11th day of April 1983, I found (evidence) ~~(no evidence)~~ of the Northwest corner of Section 9, T 16 N, R 2 W Fourth Principal Meridian, and I re-established said corner according to the Wisconsin Statutes as shown and described hereon.

Dated this 13th day of April 1983.

William C. Jung  
Deputy County Surveyor, R.L.S. 1323  
Title

History of corner establishment since Original Government Survey

In May of 1910, Fred Holden found the original corner and set an iron pipe.

**See Reverse Side  
For Maintenance**

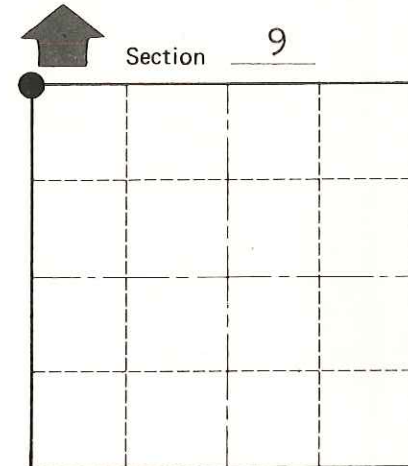
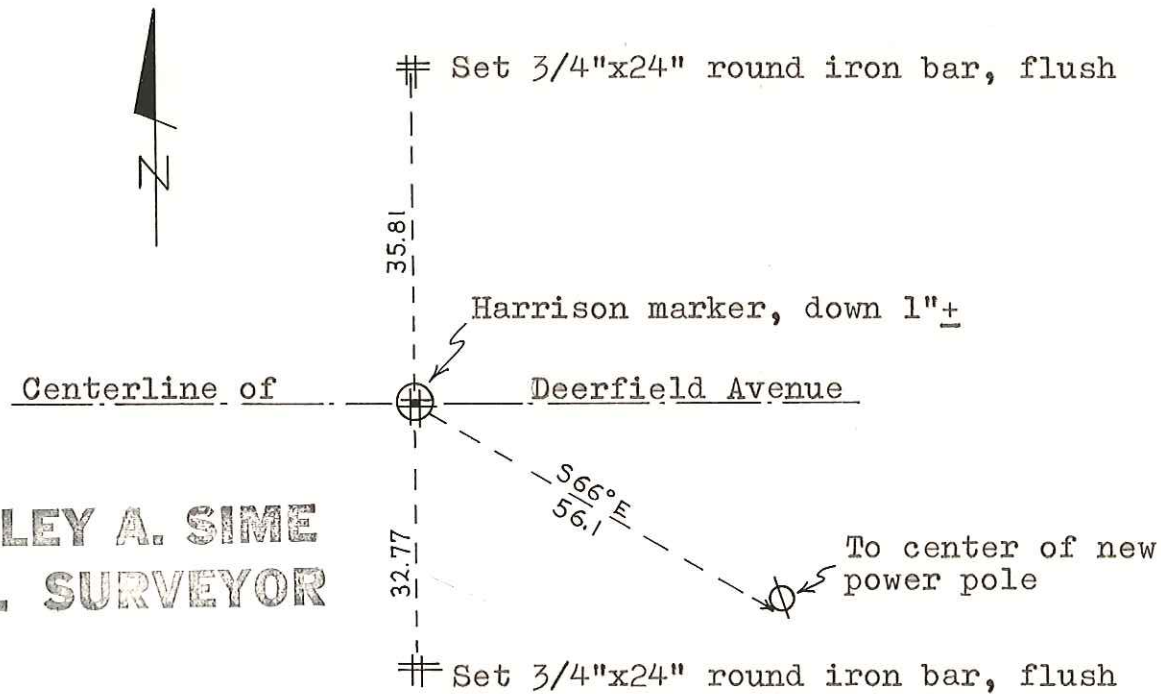
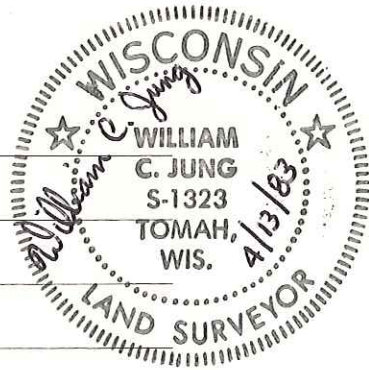
Description of corner evidence found:

I found a 3/4"x22" iron pipe, broken and bent at the occupied corner. I replaced the iron pipe with a Harrison marker. The old North-South line fences are gone, but the corner does fit the present occupied line to the North.

Description of corner and witness monuments, references and accessories used to perpetuate the original or re-established location of this corner:

Witnesses to corner location:

William C. Jung



● = LOCATION CORNER  
T 16 N R 2 W  
WISCONSIN

Approved: **HARLEY A. SIME**  
**MONROE CO. SURVEYOR**

SURVEY CONTROL ORDER

Horizontal \_\_\_\_\_  
Vertical \_\_\_\_\_

WISCONSIN COORDINATE SYSTEM

Corner	East (X)	North (Y)	Elevation (Z)	Zone
Control Sta. Name				

City, Village or Town Ridgeville  
County of Monroe  
Wisconsin

COUNTY SURVEYOR FORM NO. 1