

28

**U.S. PUBLIC LAND CORNER
MAINTENANCE**

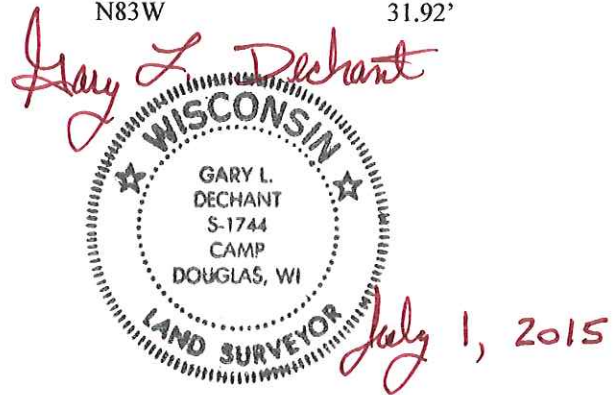
**Corner ID : S1/4 Sec.4, T16N-R2W
21602040020**

DATE	CREW	MONUMENT TYPE
July 1, 2015	Zachariah P. Dechant Gary L. Dechant	Harrison intact 215' north of Kellogg Ave. 10' west of Jet Road centerline. Down 14"

References:

	<u>Bearing</u>	<u>Distance</u>
1) Set 3/4"x24" iron bar at north edge of cemetery	N60E	60.77'
2) Set 3/4"x24" iron bar 1' west of "George" tombstone	S83E	48.45'
3) Set 3/4"x24" iron bar in field, down 14"	S60W	35.06'
4) Set 3/4"x24" iron bar in field, down 14"	N83W	31.92'

Harrison and reference markers on straight lines.



I, William C. Jung, do hereby certify that on the 11th day of May 1983 I found ~~evidence~~ (no evidence) of the North 1/4 corner of Section 9, T 16 N, R 2 W Fourth Principal Meridian, and I re-established said corner according to the Wisconsin Statutes as shown and described hereon.

Dated this 1st day of July 1983.

William C. Jung

Deputy County Surveyor, R.L.S. 1323
Title

History of corner establishment since Original Government Survey

In Volume 2 Miscellaneous, Page 25, recorded March 4, 1863, the Northwest corner of the cemetery as called for is the N1/4 Corner of Section 9. The old Town Road Records call for this corner as being 12 rods(198 feet) North of the intersection.

Description of corner evidence found:

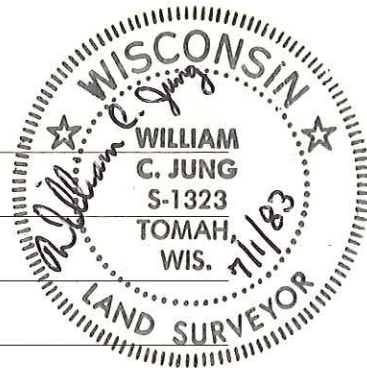
I set the corner on line and equidistant between the section corners. This puts the corner 200 feet North of the road intersection, which fits the old Town Road Records very good. This East-West alignment as set also fits the existing East-West centerlines of C.T.H. "T" in the NE1/4-NE1/4 and Deerfield Avenue in the NW1/4-NW1/4. The existing cemetery fences do not fit the cemetery description very well, but this corner as set would seem to fit the Northwest corner of the cemetery very good. My final distance along the North line of Section 9 is almost 20 feet short of the original notes, but I'm also over 21 feet short of the original notes along the North line of Section 8.

Description of corner and witness monuments, references and accessories used to perpetuate the original or re-established location of this corner:

Witnesses to corner location:

William C. Jung

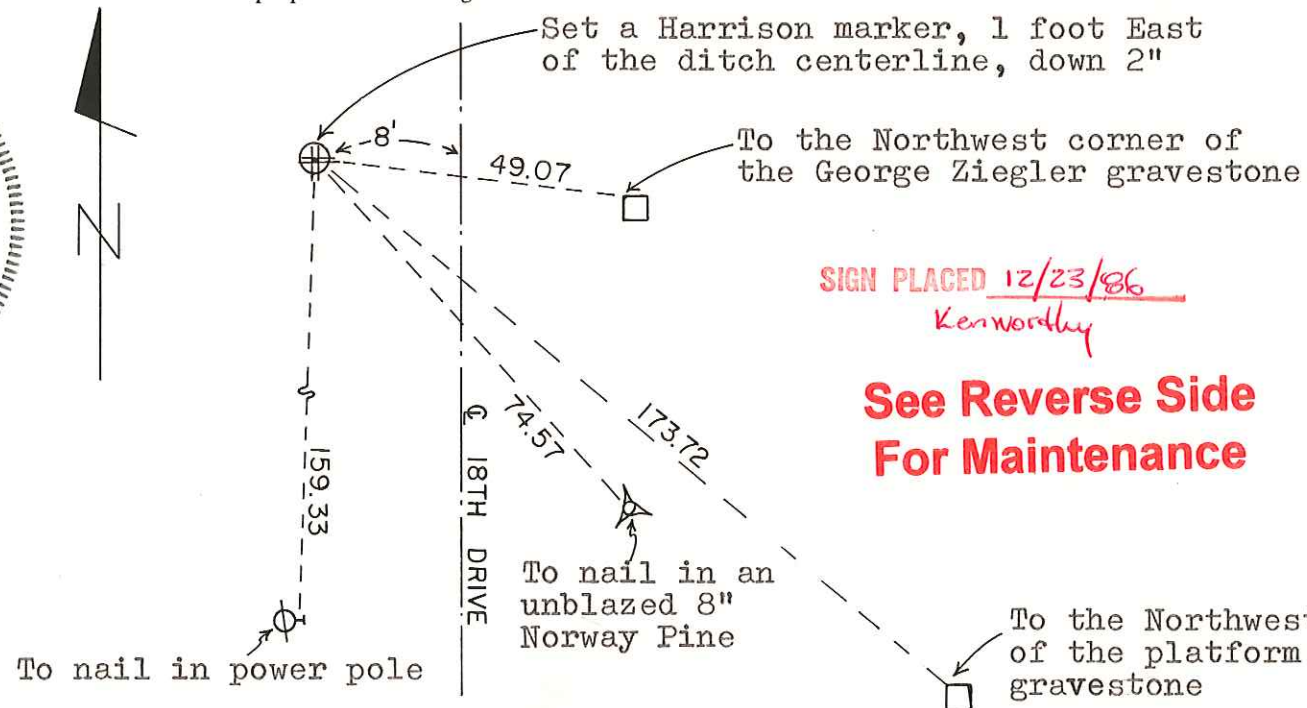
Bryan Meyer



Approved: **HARLEY A. SIME**
MONROE CO. SURVEYOR

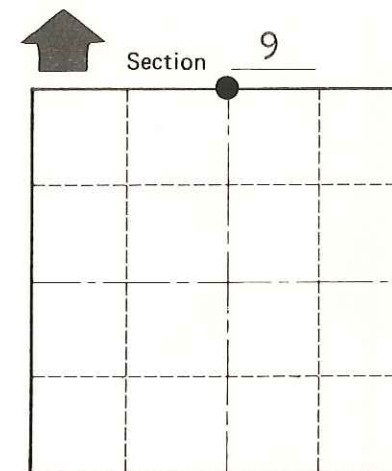
SURVEY CONTROL ORDER

Horizontal	_____
Vertical	_____



SIGN PLACED 12/23/86
Kenworthy

See Reverse Side For Maintenance



● = LOCATION CORNER
T 16 N R 2 W
WISCONSIN

WISCONSIN COORDINATE SYSTEM

Corner	East (X)	North (Y)	Elevation (Z)	Zone
Control Sta. Name				

City, Village or Town Ridgeville
County of Monroe
Wisconsin

COUNTY SURVEYOR FORM NO. 1