

21602040000

PAGE 2

I, Gary L. Dechant, do hereby certify that on the 28th day of October 19 87, I found (evidence) (~~no evidence~~) of the SW corner of Section 3, T16 N, R 2 W Fourth Principal Meridian, and I re-established said corner according to the Wisconsin Statutes as shown and described hereon.

Dated this 9th day of Nov. 19 87.

Gary L. Dechant
Registered Land Surveyor, 1744
Title

History of corner establishment since Original Government Survey

Description of corner evidence found:

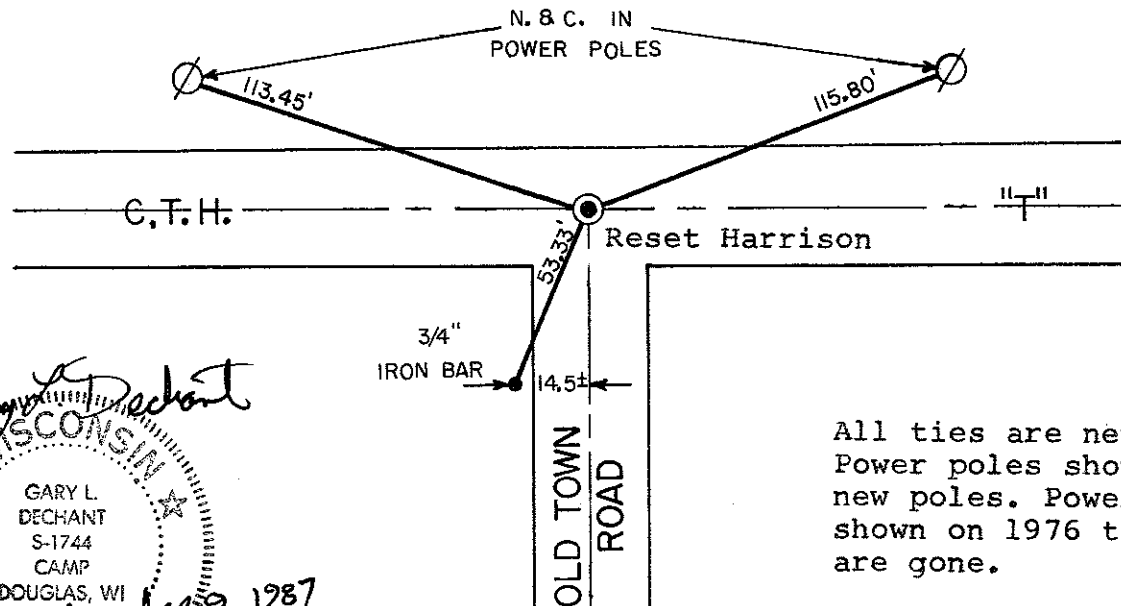
George Baker, Monroe County Highway Commissioner, contacted our office, and stated that highway repair was needed in this area and requested removal of the existing Harrison marker. New ties were taken, reset Harrison after highway repair completion.

Description of corner and witness monuments, references and accessories used to perpetuate the original or re-established location of this corner:

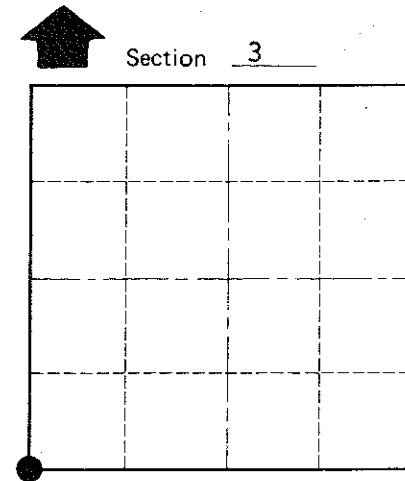
Witnesses to corner location:

David E. Madison

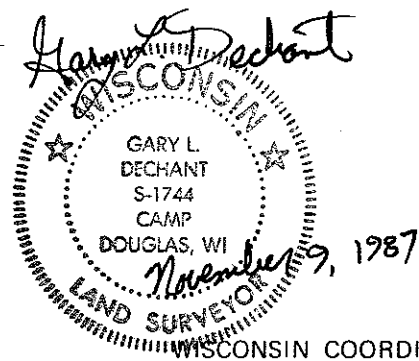
Timothy S. Frederick



All ties are new. Power poles shown are new poles. Power poles shown on 1976 tie sheet are gone.



Section 3
T 16 N R 2 W
WISCONSIN



COUNTY SURVEYOR FORM NO. 1

SURVEY CONTROL ORDER

Horizontal	_____
Vertical	_____

Corner	East (X)	North (Y)	Elevation (Z)	Zone
Control Sta. Name				

~~City/Village~~ Town Ridgeville
County of Monroe

I, Harley A. Sime, do hereby certify that on the 30th day of June 1975, I found ~~(evidence)~~ (no evidence) of the Southwest corner of Section 3, T 16 N, R 2 W Fourth Principal Meridian, and I re-established said corner according to the Wisconsin Statutes as shown and described hereon.

History of original corner establishment:

**Approved: HARLEY A. SIME
MONROE CO. SURVEYOR**

Description of corner evidence found:

Accepted the road intersection as the best available evidence. This fits the record distances to the East and South fairly well, as well as the present occupation. Eary Von Haden testified that the corner was at this intersection.

Dated this 4th day of March 1976.

County Surveyor
Title

COUNTY SURVEYOR FORM NO. 1

Description of corner and witness monuments, references and accessories used to perpetuate the original or re-established location of this corner:

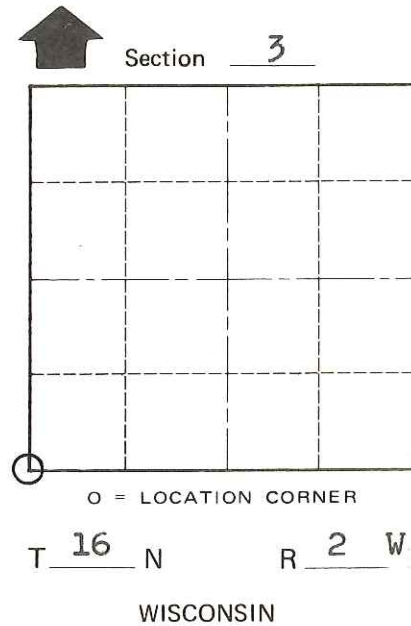
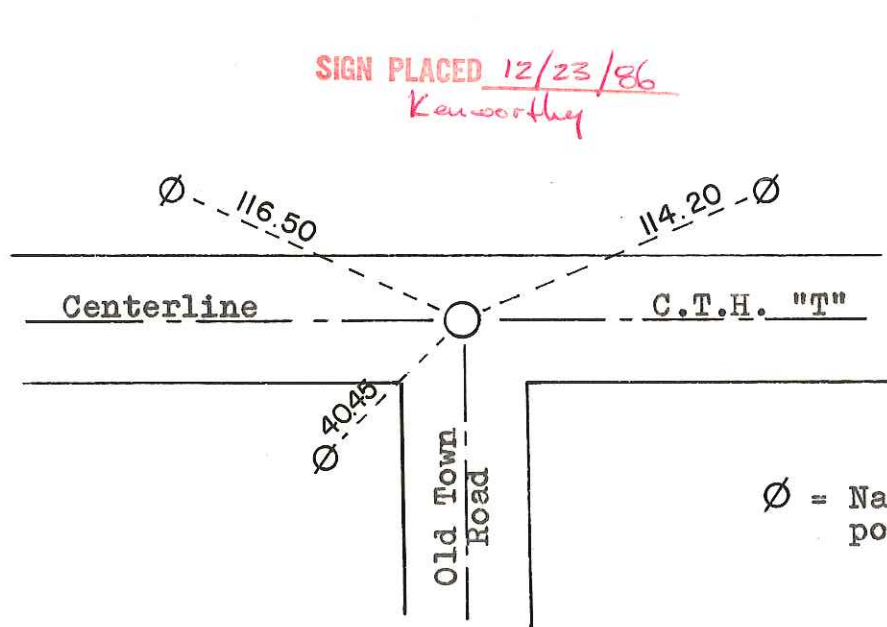
Set a Harrison marker in the road intersection, down 2".

Witnesses to corner location:

W.C. Jung-Crew Chief *W.C. Jung*

A. Ineck

G. Dechant



Ø = Nail and cap in a power pole

SURVEY CONTROL ORDER

Horizontal	_____
Vertical	_____

WISCONSIN COORDINATE SYSTEM

Corner	East (X)	North (Y)	Elevation (Z)	Zone
Control Sta. Name				

City, Village or Town Ridgeville

County of Monroe