

CERTIFICATE

CERTIFIED LAND CORNER

No. 18 B

21602022020

I, Harley A. Sime, do hereby certify that on the 6th day of March 1981, I found ~~(evidence)~~ (no evidence) of the C¹/₄ corner of Section 2, T 16 N, R 2 W Fourth Principal Meridian, and I re-established said corner according to the Wisconsin Statutes as shown and described hereon.

History of corner establishment since Original Government Survey

Schroeder (?) was here in 1895.
Hamilton La Rue was here in Sept. of 1897.

Dated this 6th day of March 1981.

Description of corner evidence found:

Set by intersecting the N-S and E-W quarter line.

Harley A. Sime, R.L.S. 355

County Surveyor
Title

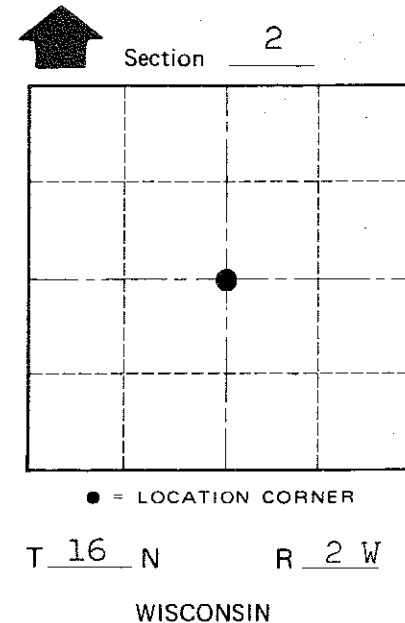
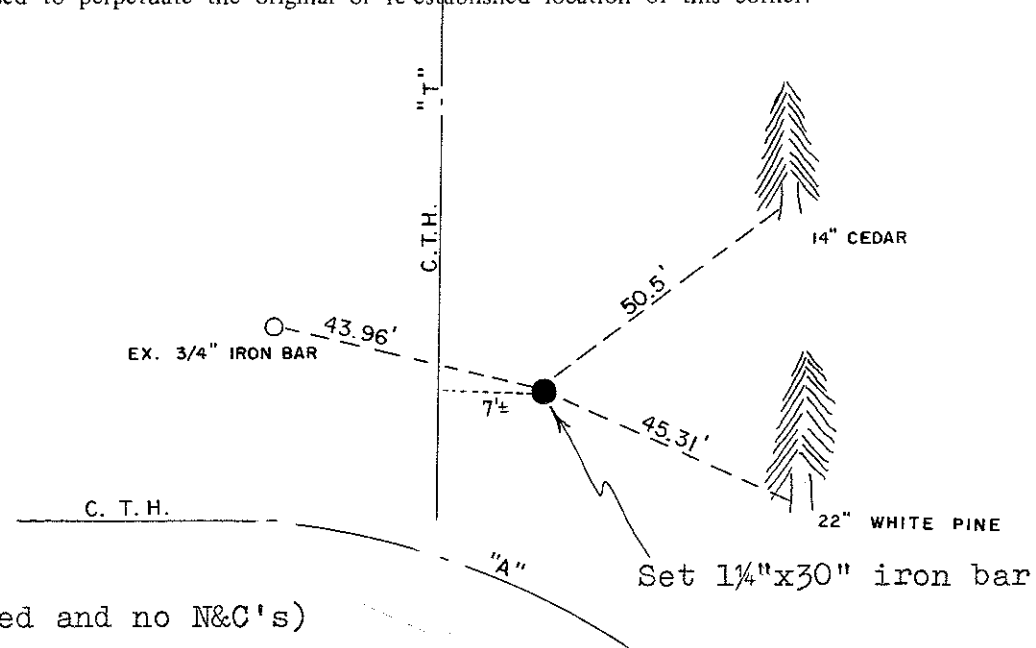
COUNTY SURVEYOR FORM NO. 1

Description of corner and witness monuments, references and accessories used to perpetuate the original or re-established location of this corner:

Witnesses to corner location:

G. Dechant

C. Pietz



**Approved: HARLEY A. SIME
MONROE CO. SURVEYOR**

(trees not blazed and no N&C's)

SURVEY CONTROL ORDER

Horizontal	_____
Vertical	_____

WISCONSIN COORDINATE SYSTEM

Corner	East (X)	North (Y)	Elevation (Z)	Zone
Control Sta. Name				

City, Village or Town Ridgeville

County of Monroe