

21602102000

I, Garold A. Sime, do hereby certify that on the 3rd day of November 1981, I found ~~(evidence)~~ (no evidence) of the E<sup>1</sup>/<sub>4</sub> corner of Section 10, T 16 N, R 2 W Fourth Principal Meridian, and I re-established said corner according to the Wisconsin Statutes as shown and described hereon.

History of corner establishment since Original Government Survey  
No known recorded history since the original government survey.

Description of corner evidence found:

I set this corner by using the existing E-W fence and by prorating the measured distance from the E<sup>1</sup>/<sub>4</sub> corner of Section 11 and the W<sup>1</sup>/<sub>4</sub> corner of Section 10.

Dated this 5th day of Nov. 1981.

Garold A. Sime, R.L.S. 1261

County Surveyor's Office

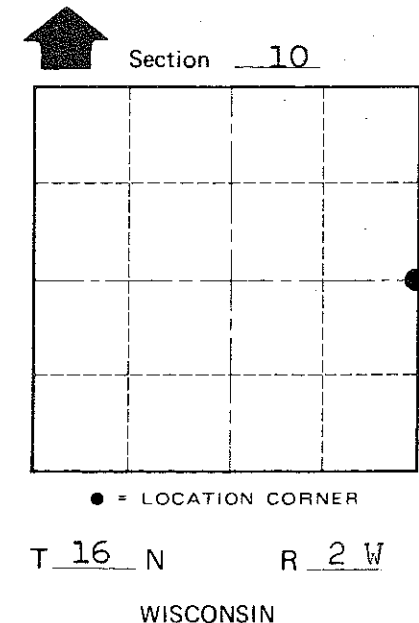
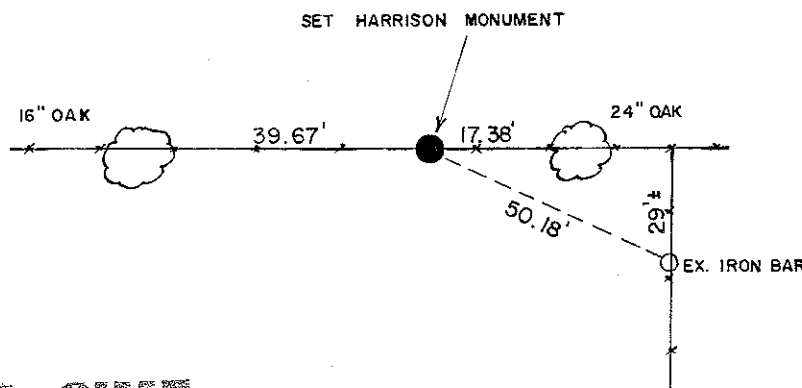
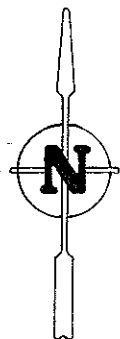
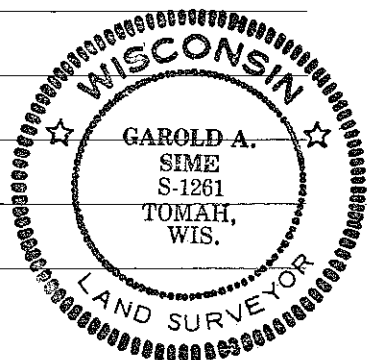
*Garold A. Sime*

Description of corner and witness monuments, references and accessories used to perpetuate the original or re-established location of this corner:

Witnesses to corner location:

G. Sime

C. Pietz



COUNTY SURVEYOR FORM NO. 1

SURVEY CONTROL ORDER

Approved: **HARLEY A. SIME**  
**MONROE CO. SURVEYOR**

(Trees double blazed with N&C's set)

Horizontal \_\_\_\_\_  
Vertical \_\_\_\_\_

WISCONSIN COORDINATE SYSTEM

Corner	East (X)	North (Y)	Elevation (Z)	Zone
Control Sta. Name				

~~any other~~ Town Ridgeville  
County of Monroe