

48

**U.S. PUBLIC LAND CORNER
MAINTENANCE**

Corner ID : S1/4 Sec. 9, T16N-R2W

21602090020

<u>DATE</u>	<u>CREW</u>	<u>MONUMENT TYPE -----</u>
May 5, 2016	Zachariah P. Dechant Gary L. Dechant	Found a nail & cap 3' west of centerline CTH "T"

References:

	<u>Bearing</u>	<u>Distance</u>
1) Existing 1" iron pipe Set by Sime in 1981, in field down 12"	N87E	50.83' (50.8') (50.81')
2) Set 3/4" x 24" round iron bar, down 12" in field	S60E	70.31'
3) Set 3/4" x 24" hexagon iron bar on section line, down 10" in field	West	33.00'
4) Existing 3/4" x 24" round iron bar set by Fechner in 2008	N39W	45.75' (45.75')
5) Set 3/4"x24" round iron bar, down 12" in field	N60W	64.92'

S1/4 Corner Section 9 and reference markers 2 & 5 are set on a straight line.



I, Harley A. Sime, do hereby certify that on the 5th day of November, 1981, I found (evidence) ~~(no evidence)~~ of the North 1/4 corner of Section 16, T 16 N, R 2 W Fourth Principal Meridian, and I re-established said corner according to the Wisconsin Statutes as shown and described hereon.

Dated this 10th day of Nov., 1981.

Harley A. Sime R.L.S. 355

County Surveyor

Approved: HARLEY A. SIME

MONROE CO. SURVEYOR

COUNTY SURVEYOR FORM NO. 1

Description of corner and witness monuments, references and accessories used to perpetuate the original or re-established location of this corner:

1990 Crew: Bryan Meyer, Brian Forsythe
July 12, 1990
Partly Cloudy, 75°±

Witnesses to corner location:

B. Meyer
C. Pietz

at edge of field

Set cast iron Harrison Marker, down 2"±.

• = Set 3/4"x24" round iron bar

WISCONSIN COORDINATE SYSTEM

Corner	East (X)	North (Y)	Elevation (Z)	Zone
Control Sta. Name				

SURVEY CONTROL ORDER

Horizontal
Vertical

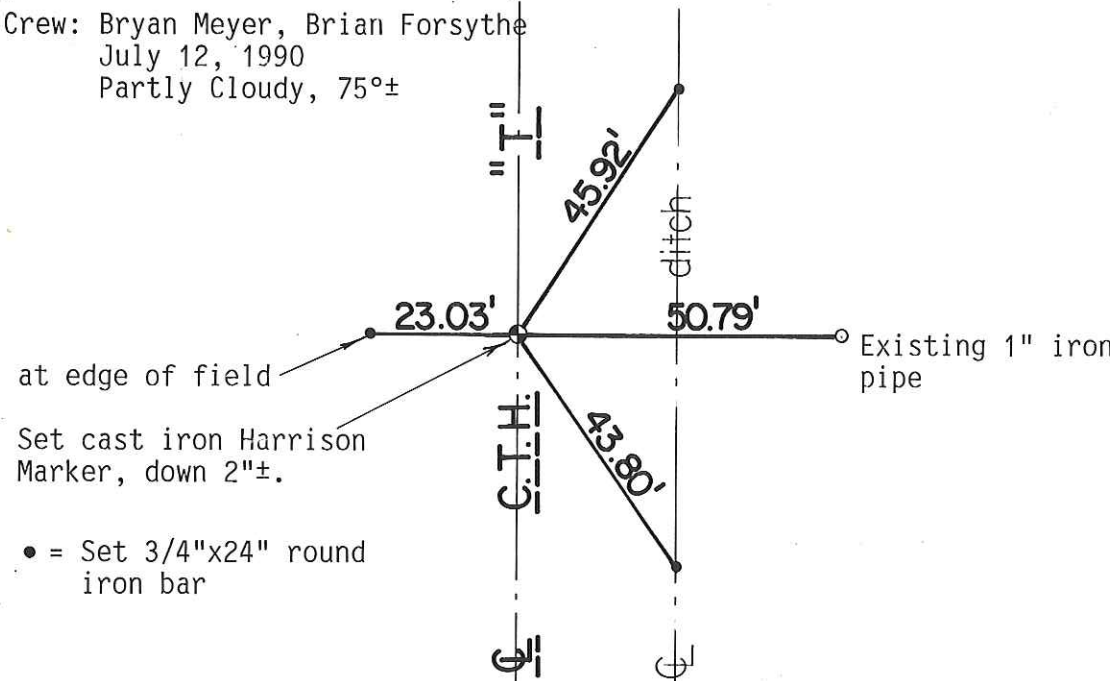
History of corner establishment since Original Government Survey

Fred Zietlow was here in February of 1972 and set a railroad spike.
D. Marten was here in June of 1972 and used Zietlow's railroad spike.

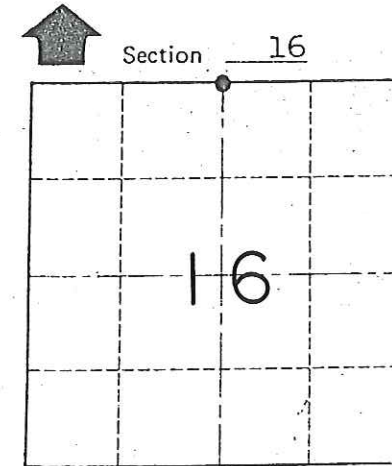
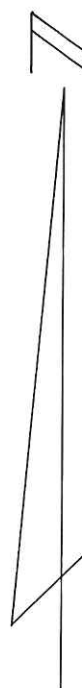
Update: Larry Feddersen called the County Surveyor to inform him that this corner was apparently destroyed when the road was cut down. He found a railroad spike at the corner which he believes was set by James Carroll. This railroad spike fit the previous ties fairly well.

Found Zietlow's railroad spike and replaced it with a Harrison monument.

Update: After checking the ties to the railroad spike, I replaced the railroad spike with a Harrison marker, down 2"± and got the additional ties as shown below. NOTE: As of September 18, 1990, no maps have been recorded by either Feddersen or Carroll.



See Reverse Side For Maintenance



Section 16
T 16 N R 2 W
WISCONSIN

~~City, Village or~~ Town Ridgeville
County of Monroe
Wisconsin

I, Harley A. Sime, do hereby certify that on the 5th day of November 1981, I found (evidence) (~~no evidence~~) of the North 1/4 corner of Section 16, T 16 N, R 2 W Fourth Principal Meridian, and I re-established said corner according to the Wisconsin Statutes as shown and described hereon.

Dated this 10th day of Nov. 1981.

Harley A. Sime R.L.S. 355

History of corner establishment since Original Government Survey

Fred Zietlow was here in February of 1972 and set a railroad spike. D. Marten was here in June of 1972 and used Zietlow's railroad spike.

Description of corner evidence found:

Found Zietlow's railroad spike and replaced it with a Harrison monument.

See Reverse Side For Maintenance

County Surveyor

Approved: HARLEY A. SIME

MONROE CO. SURVEYOR

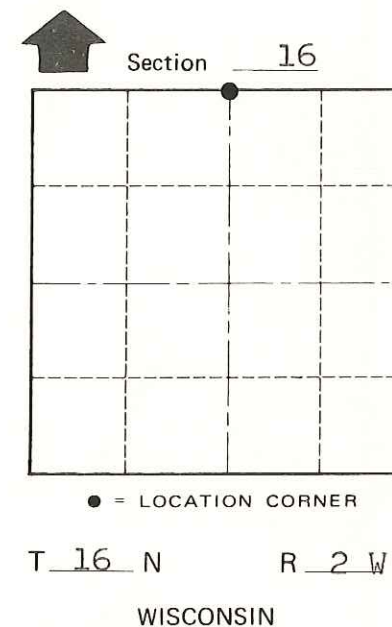
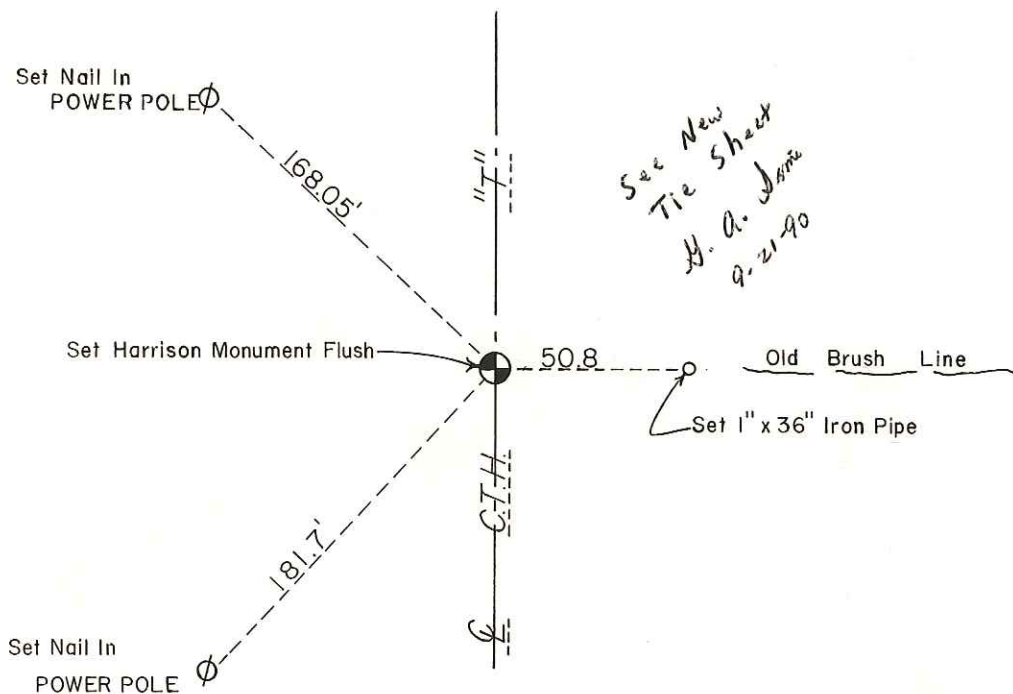
COUNTY SURVEYOR FORM NO. 1

Description of corner and witness monuments, references and accessories used to perpetuate the original or re-established location of this corner:

Witnesses to corner location:

B. Meyer

C. Pietz



SURVEY CONTROL ORDER

Horizontal	_____
Vertical	_____

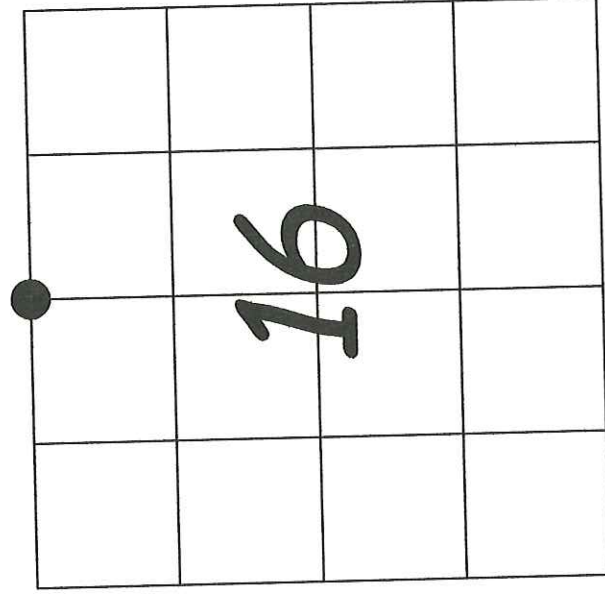
WISCONSIN COORDINATE SYSTEM

Corner	East (X)	North (Y)	Elevation (Z)	Zone
Control Sta. Name				

~~City, Village or~~ Town Ridgeville
 County of Monroe
Wisconsin

U. S. PUBLIC LAND SURVEY MONUMENT RECORD

SECTION 16 T 16 N, R 2 W, TOWN OF RIDGEVILLE
 MONROE COUNTY



LOCATION OF LANDMARK

CREW: *Jake Spees*
Chris Fechner

DATE: 1-15-08

Describe any record evidence, monument evidence, testimonial evidence, or any other material evidence you considered and whether the monument was found or restored through acceptance of an obliterated evidence location.

Tie sheet filed in July of 1990 indicated a Harrison set by Brian Meyer. Resent road construction destroyed the monument and all but one tie. We found a PK Nail with a tab placed .5" below the surface of the new asphalt 2.76 feet West of the centerline of the highway. It measures within .02 feet of the existing witness tie. I accepted it as the best available evidence of the corner and took new ties as indicated.

Describe or show any material discrepancy between the location of the restored corner and that of the corner previously restored or reestablished.
None known.

WISCONSIN COORDINATE SYSTEM	
North	
East	
Theta Angle	
Horiz. Order	
Vert. Order	
TYPE OF LANDMARK	
PK NAIL	
BEARINGS ARE REFERENCED TO	
<i>Monroe County Coordinate System</i>	
<i>N 352794.7142</i>	
<i>E 676274.2425</i>	

**See Reverse Side
 For Maintenance**