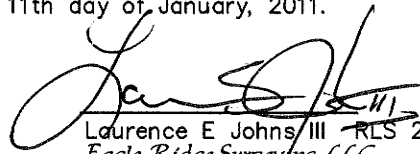


CERTIFICATE

I, Laurence E Johns III, do hereby certify that on the 3rd day of June, 2010, I found evidence of the E 1/4 Corner of Section 8, T16N, R2W, Fourth Principle Meridian, and I reestablished said corner according to the Wisconsin Statutes as shown and described hereon.

Dated this 11th day of January, 2011.



Laurence E Johns III - RLS 2804
Eagle Ridge Surveying, LLC
PO Box 213
Wilton, WI 54670

CERTIFIED LAND CORNER

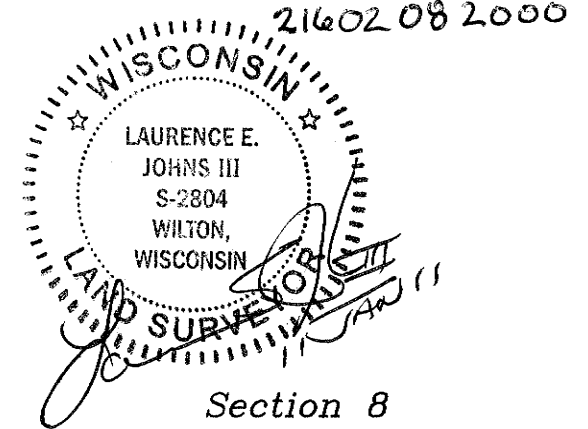
History of corner establishment since Original Government Survey
Noah Phelps established this corner in October 1847.

Description of corner evidence found:

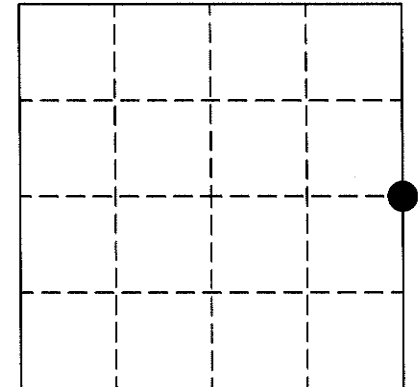
The fences in the general are somewhat erratic. Even though the straight line-prorated distance misses the fence corner by 8 feet, the split distance location seems to fit the fences in the area better. I set a Harrison monument at the straight line-prorated distance location.

No. 36

21602082000



Section 8



● = LOCATION CORNER
T16N R2W
WISCONSIN

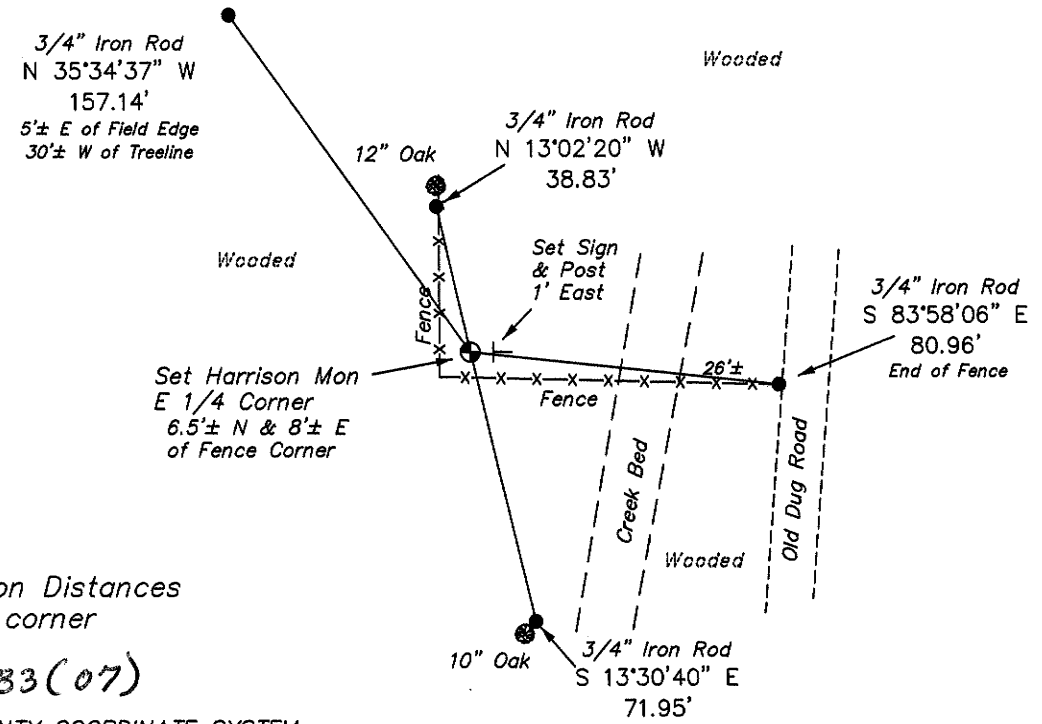
COUNTY SURVEYOR FORM NO. 1

Description of corner and witness monuments, references and accessories used to perpetuate the original or re-established location of this corner:

Witness to corner location:

Laurence E Johns III

Larry Handschy



See Back for Section Distances used for this corner
MAD 83(07)
MONROE COUNTY COORDINATE SYSTEM

SURVEY CONTROL ORDER

Horizontal
Vertical

Corner	East (X)	North (Y)	Elevation (Z)	Zone
	673636.202	355429.941		
Control Sta. Name				

Town of Ridgeville
County of Monroe

NE Corner
Harrison Mon

S 00°07'43" E
2639.15'
(2640' - Gov't)

E 1/4 Corner
Harrison Mon

S 00°07'43" E
2639.15'
(2640' - Gov't)

SE Corner
Harrison Mon