

35

**U.S. PUBLIC LAND CORNER
MAINTENANCE**

**Corner ID : E1/4 Sec.7, T16N-R2W
21602072000**

<u>DATE</u>	<u>CREW</u>	<u>MONUMENT TYPE -----</u>
May 26, 2015	Zachariah P. Dechant Gary L. Dechant	Found Harrison with bottom section only. Area has been cleared for cropping. Fences gone. Removed broken Harrison and replaced it with a cast iron TCP monument. Down 14".

References:

	<u>Bearing</u>	<u>Distance</u>
1) Set 3/4"x24" hex iron bar in field, down 14"	North	41.96'
2) Set 3/4"x24" round iron bar in field, down 14"	East	34.38'
3) Set 3/4"x24" iron pipe bar in field, down 14"	South	45.37'
4) Set 3/4"x24" round iron bar in field, down 14"	West	44.02'



I, William C. Jung, do hereby certify that on the 8th day of July 1983, I found (evidence) ~~(no evidence)~~ of the West 1/4 corner of Section 8, T 16 N, R 2 W Fourth Principal Meridian, and I re-established said corner according to the Wisconsin Statutes as shown and described hereon.

Dated this 12th day of July 1983.

William C. Jung
Deputy County Surveyor, R.L.S. 1323
Title

History of corner establishment since Original Government Survey

It would appear that A.S. Ingalls was at this corner in April of 1873.

Description of corner evidence found:

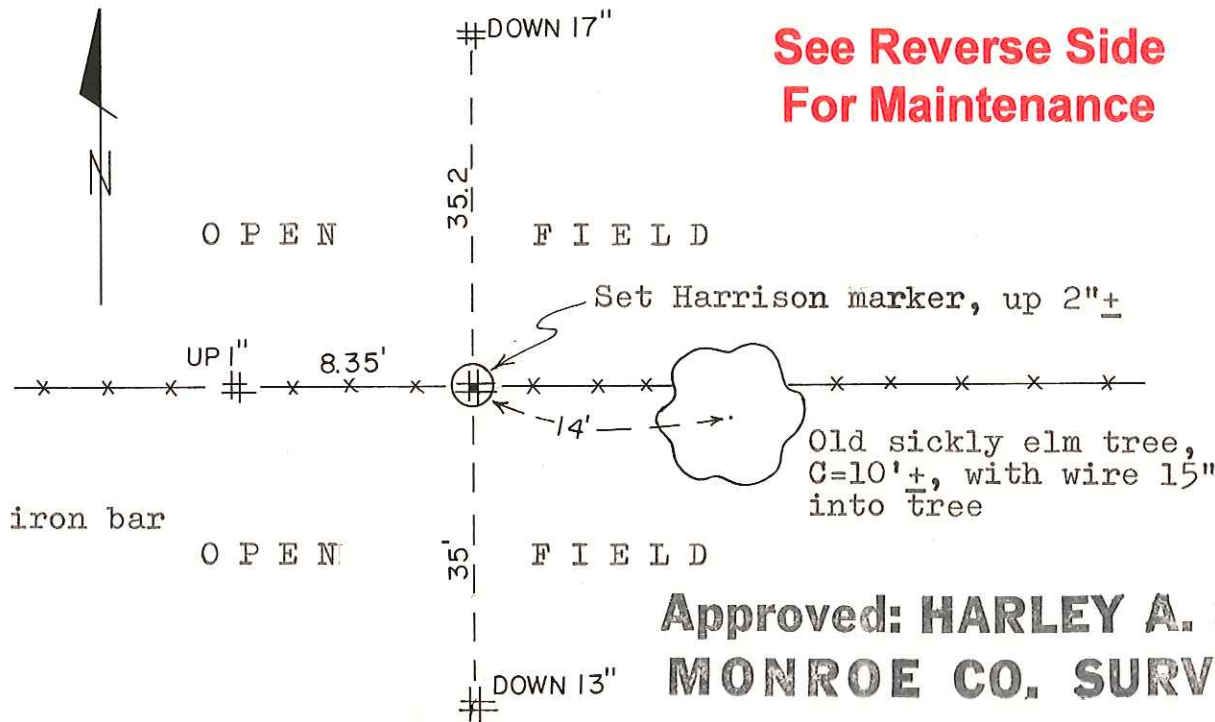
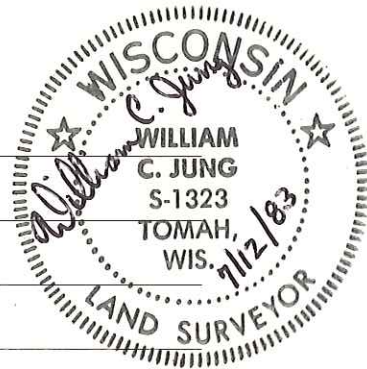
I set the corner on line between the NW and SW section corners of Section 8, and in the existing East-West fence. This location fits a location not far from being equidistant, as the corner is 2630'+ from the NW corner and 2636'+ from the SW corner. It falls about 1311'+ East of the occupied forty corner to the West and about 1316'+ West of the occupied forty corner to the East. As set this corner fits the evidence found in the West 1/2 of Section 8 very well. The fence corner at the W1/16NW of Section 8 is also only 1.6 feet West of line.

Description of corner and witness monuments, references and accessories used to perpetuate the original or re-established location of this corner:

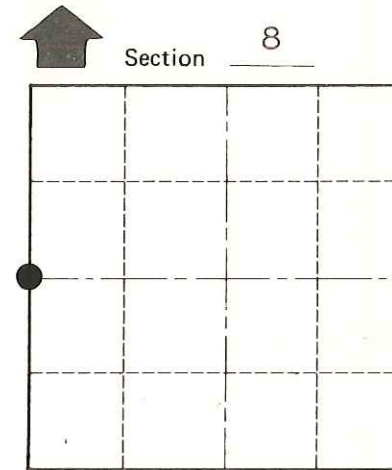
Witnesses to corner location:

William C. Jung

Dallas Wilhite



See Reverse Side For Maintenance



● = LOCATION CORNER
T 16 N R 2 W
WISCONSIN

= Set 3/4"x24" round iron bar

Approved: **HARLEY A. SIME**
MONROE CO. SURVEYOR

SURVEY CONTROL ORDER

Horizontal	_____
Vertical	_____

WISCONSIN COORDINATE SYSTEM

Corner	East (X)	North (Y)	Elevation (Z)	Zone
Control Sta. Name				

City, Village or Town Ridgeville
County of Monroe
Wisconsin

COUNTY SURVEYOR FORM NO. 1