

51

**U.S. PUBLIC LAND CORNER
MAINTENANCE**

Corner ID : SE Sec. 7, T16N-R2W

21602070000

<u>DATE</u>	<u>CREW</u>	<u>MONUMENT TYPE -----</u>
May 5, 2016	Zachariah P.Dechant Gary L. Dechant	Found Harrison, top broke off, down 6", in centerline of Kermit Ave, 6' west of fence running south

References:

	<u>Bearing</u>	<u>Distance</u>
1) Set 3/4"x24" round iron bar, down 12" in field	N20E	40.74'
2) Set 3/4" x 24" round iron bar, down 6", 6" NE of old hay rake with tree thru it	S40E	63.87'
3) Set 3/4" x24" round iron bar, down 12" in field	S20W	43.62'
4) Set 3/4" x 24" round iron bar, down 12" in field	N40W	50.05'

Harrison and reference markers are set on straight lines.



I, Harley A. Sime, do hereby certify that on the 5th day of November 19 81, I found (evidence) (~~no evidence~~) of the Northwest corner of Section 17, T 16 N, R 2 W Fourth Principal Meridian, and I re-established said corner according to the Wisconsin Statutes as shown and described hereon.

Dated this 13th day of Nov. 19 81.

Harley A. Sime R.L.S. 355

County Surveyor

Approved: HARLEY A. SIME
MONROE CO. SURVEYOR

Description of corner and witness monuments, references and accessories used to perpetuate the original or re-established location of this corner:

Witnesses to corner location:

B. Meyer

C. Pietz

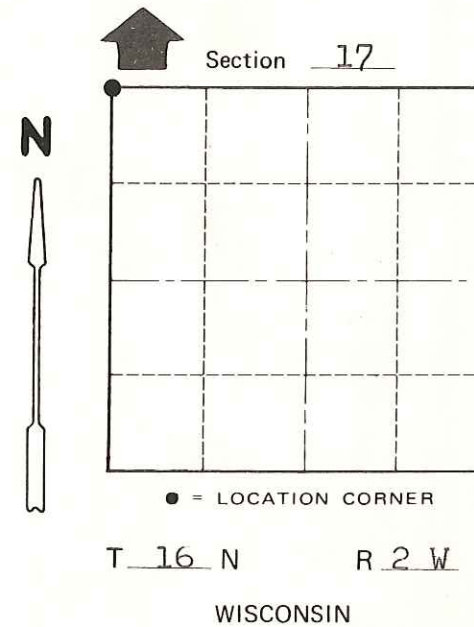
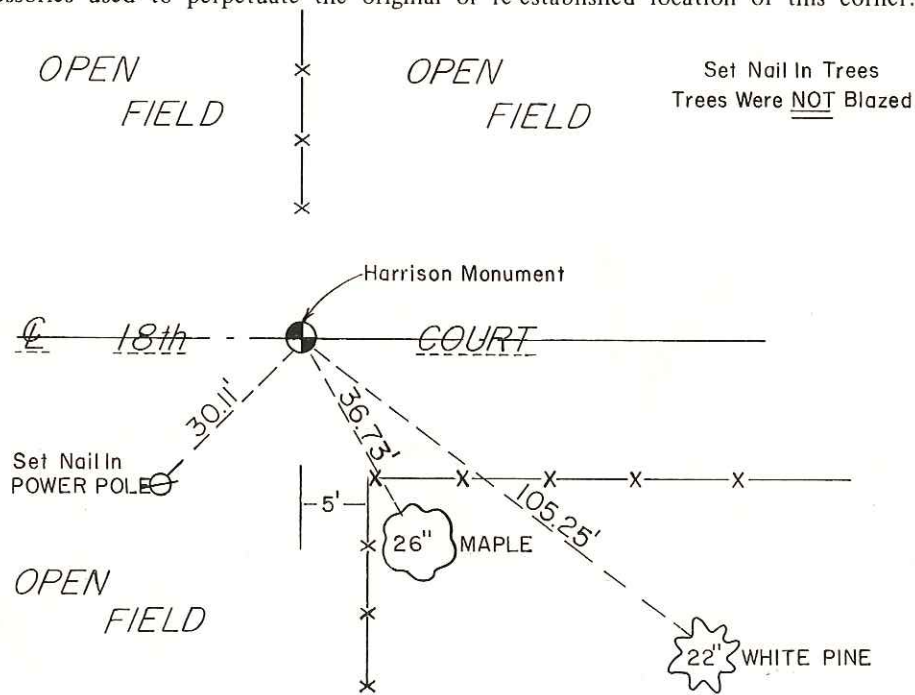
History of corner establishment since Original Government Survey

A.S. Ingalls was here in April of 1873. D. Marten was here in June of 1972 and set an iron bar.

Description of corner evidence found:

Found Marten's iron bar and replaced it with a Harrison monument.

See Reverse Side For Maintenance



SURVEY CONTROL ORDER

Horizontal	_____
Vertical	_____

WISCONSIN COORDINATE SYSTEM

Corner	East (X)	North (Y)	Elevation (Z)	Zone
Control Sta. Name				

~~City Village or~~ Town Ridgeville
County of Monroe
Wisconsin

COUNTY SURVEYOR FORM NO. 1