

# 31

**U.S. PUBLIC LAND CORNER  
MAINTENANCE**

**Corner ID : SE Sec.6, T16N-R2W  
21602060000**

<u>DATE</u>	<u>CREW</u>	<u>MONUMENT TYPE -----</u>
May 28, 2015	Zachariah P. Dechant Gary L. Dechant	Harrison at road PI. Top broke off. Down 1'. 16' North of driveway 17388 Kellogg Ave. 10' south of elec. meter.

References:

	<u>Bearing</u>	<u>Distance</u>
1) Set 3/4"x24" round iron bar in field, down 12"	N34E	60.20'
2) Set 3/4"x24" round iron bar, down 6" on NW side of cluster of Spruces	S54E	84.27'
3) Set 3/4"x24" round iron bar, down 6"	S34W	55.97'
4) Set 3/4"x24" round iron bar in field, down 12"	N54W	53.40'

**Harrison and reference markers are on straight lines.**



I, William C. Jung, do hereby certify that on the 11th day of May 1983, I found (evidence) ~~(no evidence)~~ of the Northwest corner of Section 8, T 16 N, R 2 W Fourth Principal Meridian, and I re-established said corner according to the Wisconsin Statutes as shown and described hereon.

Dated this 1st day of July 1983.

William C. Jung

Deputy County Surveyor, R.L.S. 1323  
Title

History of corner establishment since Original Government Survey

Fred Holden found the original corner at this location in May of 1910. Town Road records, dated January 19, 1867, show that the road to the South started at this corner.

**See Reverse Side For Maintenance**

Description of corner evidence found:

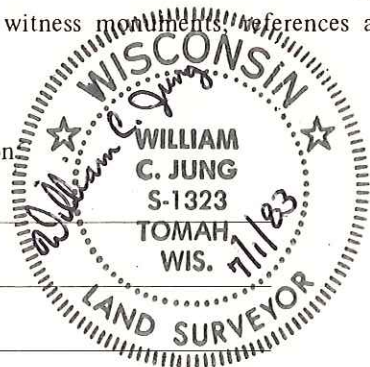
I set the corner at the occupied corner and accepted this as the best available evidence of the original government corner. This corner is on line with the centerline to the East and to the South. It is also on line with an old fence to the North. The final East-West line between the section corners (NW & NE) fits the East-West location at the North 1/4 corner almost perfectly. At the North 1/4 Corner my final corner falls only 0.6' North of the occupied corner. Therefore this NW corner fits the line going back to the East very well. This NW corner also fits the occupied line to the South very well. In splitting the mile along the West line of Section 8, the East-West fence at the West 1/4 corner is only 3 feet off. The line fence along the West line of the NW 1/4-NW 1/4 also fits

Description of corner and witness monuments, references and accessories used to perpetuate the original or re-established location of this corner: very well.

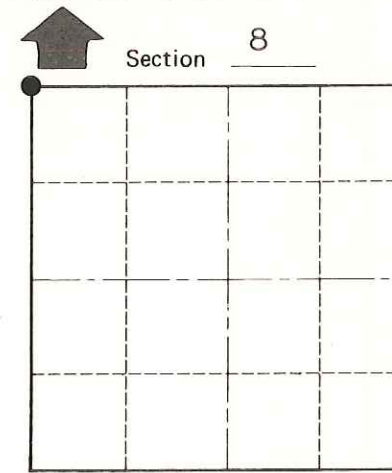
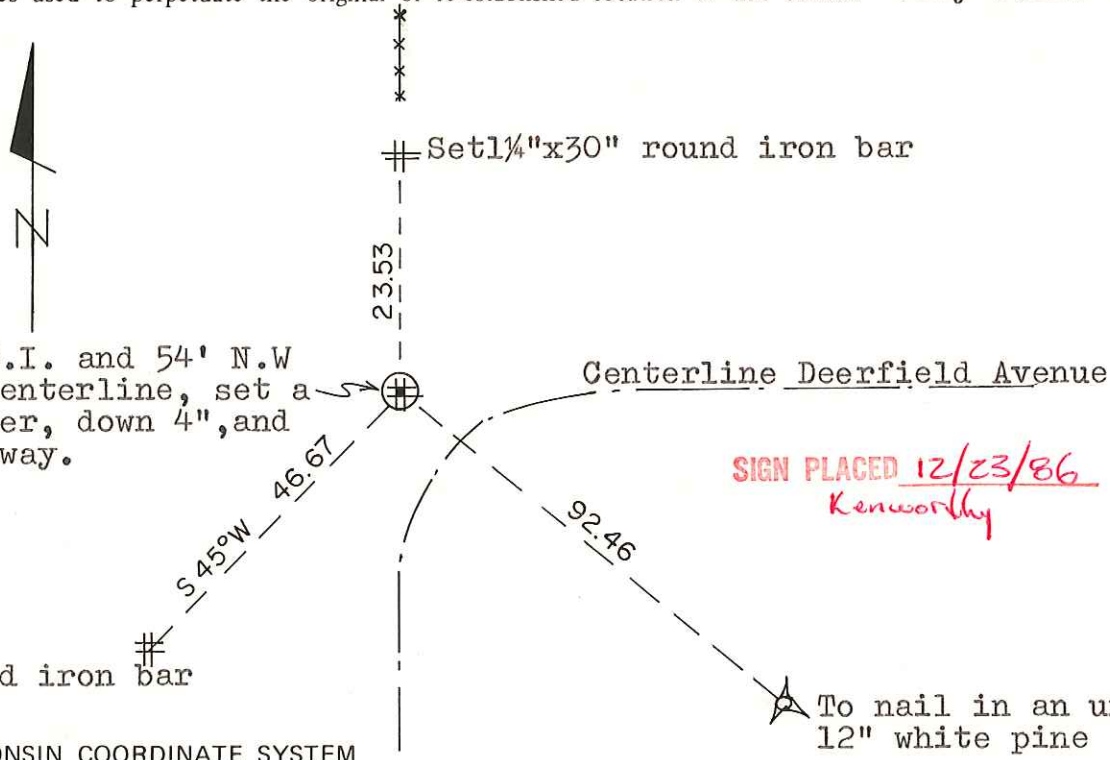
Witnesses to corner location

William C. Jung

Bryan Meyer



At the road P.I. and 54' N.W of the road centerline, set a Harrison marker, down 4", and in farm driveway.



● = LOCATION CORNER  
T 16 N R 2 W  
WISCONSIN

SIGN PLACED 12/23/86 Kenworthy

To nail in an unblazed 12" white pine  
City, Village or Town Ridgeville  
County of Monroe  
Wisconsin

Approved: **HARLEY A. SIME**  
**MONROE CO. SURVEYOR**

SURVEY CONTROL ORDER

Horizontal	_____
Vertical	_____

Set 1 1/4" x 30" round iron bar

WISCONSIN COORDINATE SYSTEM

Corner	East (X)	North (Y)	Elevation (Z)	Zone
Control Sta. Name				

COUNTY SURVEYOR FORM NO. 1