

56

**U.S. PUBLIC LAND CORNER
MAINTENANCE**

**Corner ID : E1/4 Sec. 17, T16N-R2W
21602172000**

<u>DATE</u>	<u>CREW</u>	<u>MONUMENT TYPE -----</u>
May 5, 2016	Zachariah P.Dechant Gary L. Dechant	Found Harrison, top broke off, at intersection of north & east fences. Fence running east only approx 200' before it bends sharply to the SE along an easterly steep slope. Trail running north on west side of of north fence. Set new sign 1' west.

References:

	<u>Bearing</u>	<u>Distance</u>
1) Set 3/4"x24" round iron bar, down 6", 4' SE of Double 12" & 6" White Oak	N34E	25.00'
2) Set 3/4" x 24" round iron bar, down 6", 5" NW of Oak stump (BT)	S58E	33.53'
3) Set 3/4" x24" round iron bar, down 6",	S16W	24.04'
4) Set 3/4" x 24" round iron bar, down 6", 4" NE of triple Birch	N73W	29.24'



I, Harley A. Sime, do hereby certify that on the 9th day of August 1972, I found (evidence) ~~(no evidence)~~ of the W 1/4 corner of Section 16, T 16 N, R 2 W Fourth Principal Meridian, and I re-established said corner according to the Wisconsin Statutes as shown and described hereon.

Dated this 6th day of Feb. 1978.

County Surveyor
title

History of original corner establishment:

Approved: **HARLEY A. SIME**
MONROE CO. SURVEYOR

Description of corner evidence found:

See Reverse Side For Maintenance

Set Harrison Monument but the top 10" broke off. The Harrison was set up 4" above ground surface. Could not drive spikes in trees completely, so horizontal tie measurements were taken to the tree.

Accepted the fence intersection as the best available evidence.

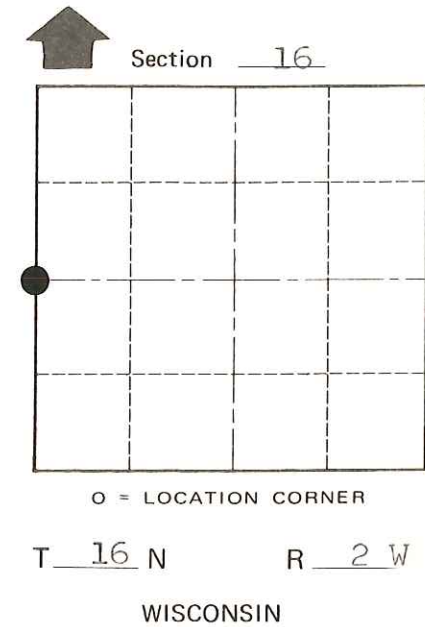
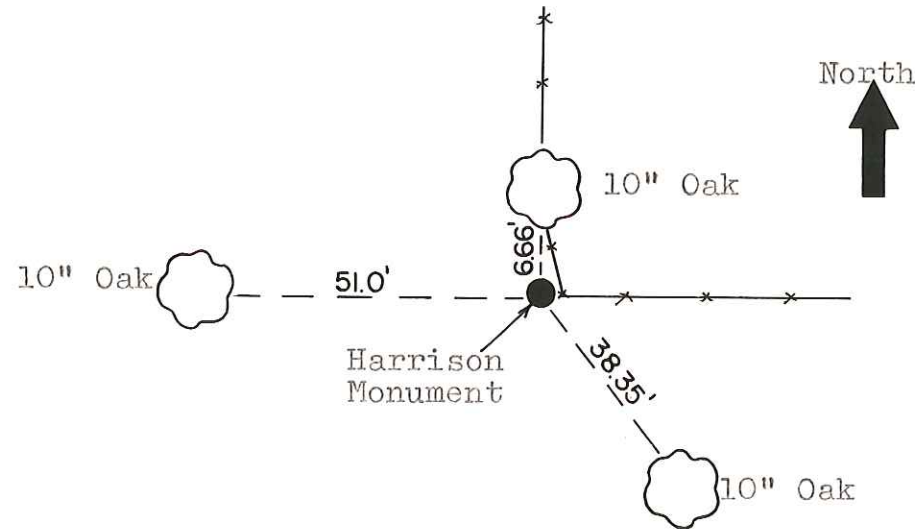
Description of corner and witness monuments, references and accessories used to perpetuate the original or re-established location of this corner:

Witnesses to corner location:

D. Marten

J. Felber

G. Sime



COUNTY SURVEYOR FORM NO. 1

SURVEY CONTROL ORDER

Horizontal	_____
Vertical	_____

WISCONSIN COORDINATE SYSTEM

Corner	East (X)	North (Y)	Elevation (Z)	Zone
Control Sta. Name				

City, Village or Town Ridgeville

County of Monroe