

21602170020

I, Harley A. Sime, do hereby certify that on the 5th day of November 1981, I found (evidence) (~~evidence~~) of the South 1/4 corner of Section 17, T 16 N, R 2 W Fourth Principal Meridian, and I re-established said corner according to the Wisconsin Statutes as shown and described hereon.

Dated this 10th day of Nov. 19 81.

Harley A. Sime R.L.S. 355

County Surveyor

Approved: ^{Title} HARLEY A. SIME

MONROE CO. SURVEYOR

COUNTY SURVEYOR FORM NO. 1

Description of corner and witness monuments, references and accessories used to perpetuate the original or re-established location of this corner:

Witnesses to corner location:

B. Meyer

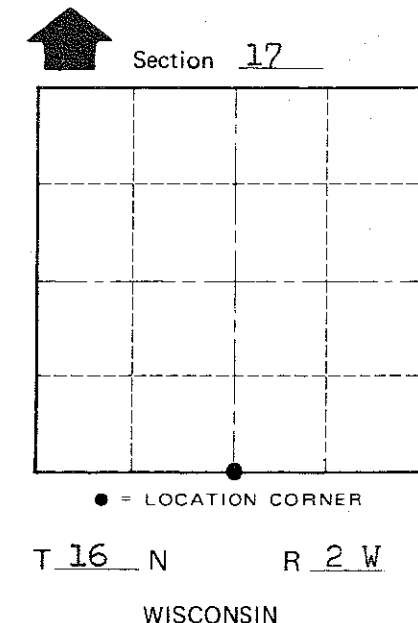
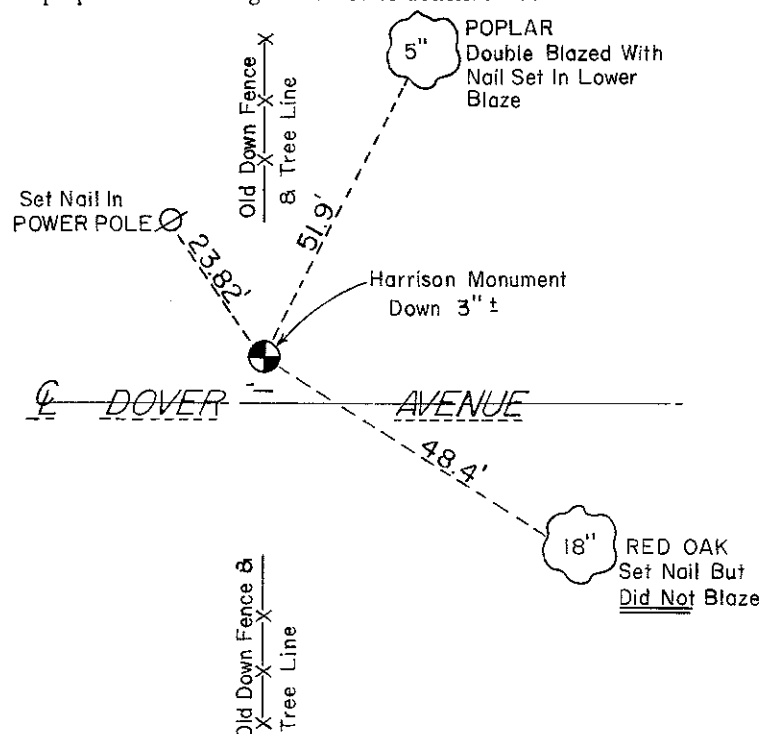
C. Pietz

History of corner establishment since Original Government Survey

D. Marten was here in August of 1972 and set an iron bar. Marten was here again in May of 1973 and used the same iron bar.

Description of corner evidence found:

Found Marten's iron bar and replaced it with a Harrison monument.



SURVEY CONTROL ORDER

Horizontal	_____
Vertical	_____

WISCONSIN COORDINATE SYSTEM

Corner	East (X)	North (Y)	Elevation (Z)	Zone
Control Sta. Name				

~~City Village~~ Town Ridgeville
 County of Monroe
Wisconsin